

HERETAUNGA TRAMPING CLUB P O BOX 14086 MAYFAIR
HASTINGS 4159

POHOKURA – Bulletin No 247

August 2014

HTC Committee

| | | | |
|--------------------|-------------------|----------|-------------------------------|
| Club Patron: | Jim Glass | 877 8748 | james@martinglass.co.nz |
| President: | Christine Hardie | 844 9590 | chardie2000@hotmail.com |
| Vice President: | Graeme Hare | 844 8656 | grhmhare@xtra.co.nz |
| Treasurer: | Lex Smith | 877 4087 | smithers@xtra.co.nz |
| Club Captain: | Susan Lopdell | 844 6697 | susansplace@xtra.co.nz |
| Asst Club Captain: | John Montgomerie | 877 7358 | j.montgomerie@paradise.net.nz |
| Editor: | Randall Goldfinch | 845 4913 | randall.g@xtra.co.nz |
| Committee: | Penny Isherwood | 844 9994 | p.isherwood@orcon.net.nz |
| | Geoff Clibborn | 844 6039 | geoff.evelyn@xtra.co.nz |
| | Marjorie Musson | 878 8279 | mussons@xtra.co.nz |
| | Glenda Hooper | 877 4183 | hoopberry@orcon.net.nz |

| | |
|-----------------------|--|
| Truck: | <u>Geoff Clibborn</u> , Lex Smith |
| Fixtures: | <u>Susan Lopdell</u> , John Montgomerie, Graeme Hare |
| | Glenda Hooper, Rodger Burn (Mid-Week Group) |
| Huts: | <u>John Montgomerie</u> , Susan Lopdell, Ray Manning, |
| Training: | <u>John Montgomerie</u> , Susan Lopdell, Mike Bull |
| Environment: | <u>Mike Lusk</u> , Penny Isherwood, Raewyn Ricketts |
| SAR: | <u>John Montgomerie</u> , Gerald Blackburn, Graham Thorp |
| Meetings: | <u>Lex Smith</u> , Penny Isherwood, Graeme Hare |
| Social: | Glenda Hooper, Raewyn Ricketts, Lyn Gentry, Heather Stephenson |
| Sales Rep: | Marjorie Musson, Penny Isherwood |
| Scrap Book: | Marjorie Musson |
| Library: | Liz Pindar |
| Editor's Assistant: | Christine Hardie |
| Supper: | Joan Ruffell |
| Photographic Records: | Glenda Hooper, Lex Smith |
| Membership Records: | Glenda Hooper |
| Web Editor: | Glenda Hooper |

Club Meetings: These are held every second Wednesday (before a tramp) at the Hastings Harrier Clubrooms in Sylvan Road, Hastings. Doors open 7:30pm; visitors are most welcome. 50c donation gratefully accepted each meeting towards hall hire (*place in the old boot*).

Website: www.htc.org.nz

Mail: P O Box 14086, Mayfair, Hastings 4159

Enquiries: Glenda Hooper 877 4183 Graeme Hare 844 8656 Susan Lopdell 844 6697

Club Cell-phone (held in the truck) 027 438 6474

The President Writes

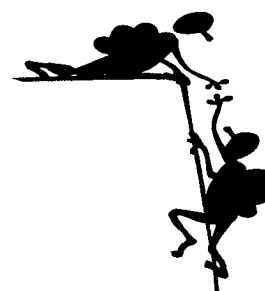
In my first commentary as President I was looking forward to the club's 75th jubilee. Now, in my last presidential piece, I am looking forward to another anniversary: HTC's 80th birthday. Undoubtedly the occasion will be marked in some way and we will be reflecting again on what members have been doing in the outdoors. In each issue of the *Pohokura* I have given attention to memorable events as well as acknowledged regular activities. Quite a lot has gone on over the last five years, notably the ongoing and successful programme of trips, mostly in the North Island.

Activities such as the annual auction and the yearly photo competition have continued. Old traditions such as the annual Cairn Trip and the Christmas Bush or Beach party have not died. Sadly, some features have not lasted, most notably the Kaweka Challenge Mountain Race. Newer ones have developed: the club calendar, the winter Birthday Boys Bash, the exchanges with Wanganui T C, the travel-and-tramp holidays run in late summer by Graeme and, more recently, Lex. Contorta control trips are back and conservation-oriented trips such as Mike Lusk's Maungataniwha forays have been successfully completed. Of course the biggest event in terms of public recognition was the 60th anniversary of the first ascent of Everest/Chongolungma in May 2013 and the part played by HTC member, George Lowe. The club has also featured in different publications such as Shaun Barnett's book, *Shelter From the Storm* [plus his new book about the history of tramping in New Zealand which is due out very soon] and Tony Gates' memoirs. And some of the biggest efforts from members have taken place recently with the refurbishment of all of our club huts.

Behind all these club activities there have been big changes going on in the wider world. The management of public lands has been redefined again as the present government decides its spending priorities. In response, DoC has produced a new set of initiatives in order to do its job. There has been DMF [Destination Management Framework] and RUG [Ruahine User Group] and CCPF [Community Conservation Partnership Fund] to mention a few. HTC has responded to them either individually or as part of FMC. Think big-type schemes such as Fiordland Monorail [plus the Highway plan] and Ruataniwha Dam are also of interest to trampers. And this is an election year so it will be interesting to see what plans will be produced that could affect the country's tramping fraternity.

Plenty to look back on and forward to. Sometime soon I hope the club will have a discussion about its future – whether or not any adjustments need to be made so that it can respond to all the above issues as well as maintain its current programmes. Well done, all the people who have kept everything going over the last few years. There is room for others to take on responsibilities as well so I hope that will happen as we approach our next decade.

Christine Hardie



TRIP REPORTS

#2244

Khyber Pass

Sun 19 Jan 2014

Five bodies clambered into Peter and Glenda's bus for a day trip to Khyber Pass. We turned off onto the metalled Mill Road to be "all shook up" as the corrugations had everything rattling inside the bus. Managed to drive the bus right to the end carpark and, in no time, clambered over the stile and wound our way down to the river. Someone - who shall remain nameless - took the party on a shortcut to the river through hidden

August 2014

waterways, buddleia and other rubbish. A coolish start as we wandered downstream, criss-crossing many times, water level not a problem. We came across a campsite with caravan, small hut, washing line and swing situated on a river terrace - access to this is from Alder Road. We came across two vehicles that had obviously washed away in earlier storms and noticed various slips on the surrounding hillsides. I was quite disappointed with the pass as I had imagined it to be much longer, don't know why. We all plunged into the deep pools to cool off, scaring some trout into shallow water. As usual after an easy and enjoyable tramp, we stopped off in Waipawa for ice-creams before heading home.

Party: Des Smith, Glenda Hooper, Janice Love, Peter Berry, Susan Lopdell (organiser)

| | | |
|--------------|------------------------|--------------------|
| #2245 | Boundary Stream | 26 Jan 2014 |
|--------------|------------------------|--------------------|

A good-sized party left Pernel Orchard and travelled north to Boundary Stream with David Blake driving and daughter, Keri, chief navigator. The tramp was through the Boundary Stream reserve from Pohokura Road to Hayes Access Road. The party met John Berry and Tina Godbert at the top carpark - they had left town at some ungodly hour to walk through the reserve to capture the dawn chorus. They had organised a ride back to their car at Hayes Access Road with David, Keri, Pam and Geoff in the truck.

After a visit to the kaka aviary [and Susan finding out that weta do indeed bite] the party went down the Tumanako Loop and on to the Kamahi Track.; The trip through the lovely bush was accomplished in time to have lunch at Shines Falls with David, Keri and Pam, who had walked up from the bottom car-park. All then walked out to the truck past the magnificent limestone outcrops (where Fred was able to view the healthy thistles that grow up there). A great day was had by all. Thanks, David, for driving. GH

Party: Nat Berry, Ben Morgan, Penny Isherwood, Anne Cantrick, Susan Lopdell, David and Keri Blake, Pam Turner, Bobby Couchman, Fred Chesterman, Marion Nicholson, Des Smith, Janice Love, Marjorie Musson, Geoff Clibborn

| | | |
|--------------|--------------------------------|---------------------------|
| #2246 | Maungataniwha Revisited | 29 – 30 March 2014 |
|--------------|--------------------------------|---------------------------|

A group of 10 of us drove the three hours to Waiau Base camp, the last 45 minutes being escorted by Barry Creane from the Maungataniwha Forest Trust.

We unloaded into various bedrooms and tents and then most of us walked along to the first skink traps. Nat, chauffeured by Ben in the Gator (4WD mini-ute), followed.

We found and set the traps we had installed there last spring and then raced off down to the second set of traps beside the Waiau River which we also set. The skink traps were made of just a four-litre paint tin with drainage holes set in the ground so the top of the tin was level with the surface. A wooden lid with skink sized spacing completes the trap. To set one, we had to first remove the little stick that provided an exit for any skinks that fell into the tin when it wasn't being monitored. Then we placed a little bit of pear to entice the skink plus a piece of wet kitchen sponge for water supply in the tins and replaced the lids. So ended our work for the day now making it time to eat and play. We had lunch down by the Waiau and, after a fossick around, returned back up the track to the camp with most catching a ride some of the way back in the Gator.



A popular way to travel around Maungataniwha

After lunch, a convoy of Gator, ute and quad bike carried us a few kilometres along the track north of the camp to a ridge where there were supposed to be *Dactylanthus* (wood rose). Here, Barry and the ute left us and we walked down the ridge towards the Waiau River, looking for signs of the *Dactylanthus*. We didn't find any and are unsure what had happened to them. We did find plenty of pink markers but no cages that were there to protect them. Thwarted, we trudged back up the ridge and returned to camp. Ben kindly returned in the Gator to pick up the three who, due to lack of ute, had had to walk back.

That night was a shared meal, after which we had an enjoyable evening. Only Anne, Nat, Ben and I tented and I think I was the only one who heard the vocal kiwi during the night. The next morning we all went to the nearest skink trap site to check the traps and then put the exit sticks back in. We found no skinks. A small party went down to the river site by Gator to do those sites while the rest had a short walk through the bush near the camp. There were no skinks in the river traps as well. We then loaded the truck and drove to where we had walked down to the Mangahouanga (Dinosaur) Stream last time. Everyone except Lex and me followed the previously-used track but this time, instead of climbing up the ridge when hitting the stream, they climbed over and back down to the stream and followed it down to S Bend Road. A few good fossils were found and photographed. Lex drove the truck round to S Bend Road and we walked up to meet them all for lunch. Then it was back to the truck and home. Thanks, Lex for driving on what was a most enjoyable weekend.

GH

Party: Mike Lusk, Lex Smith, Ben Morgan, Nat Berry, Glenda Hooper, Susan Lopdell, Anne Cantrick, Marion Nicholson, Fred Chesterman, Graeme Hare, Penny Isherwood

#2247

Yeomans Mill Site – Parks Peak Track

Sat 5 April 2014

We left the truck at the top of the hill above the old Yeomans Mill Site as the state of the road down the hill was unknown. Armed with loppers, secateurs, orange triangles, hammer and nails we set off. Some removed footwear to cross the Makaroro River while others were tougher. We then all walked up the track past the old Craig Hut site to the intersection with Yeomans Track where we took a left turn and headed up the 650 metre climb towards the Parks Peak/Barlow Track junction. With party members sporting various reasons hindering fast tramping, it was a slow climb in the drizzling rain although the bush was as lovely as ever. Once we had tripped over most of the uphill contours, we had lunch sheltered in a little patch of beech.

The weather was still not pleasant and it was obvious we were not going to complete the track-clearing task for the day. We decided that such a mission should be left for another weekend when Day One can be a fun tramp culminating in an overnight stay in either Barlow or Parks Peak Hut and Day Two can be the track clearing day. Having made this executive decision, two decided to return back to the truck while the remaining three carried on to the sign at the top of Barlow Track before turning round and retracing their steps. While the aim of the tramp was not achieved it was still an enjoyable day and good to get out and have some exercise. Thanks, Lex for driving.

GH

Party: Lex Smith, Janice Love, Alan Petersen, Christine Snook, Glenda Hooper

#2248

Kahuranaki

23 April 2014

What a glorious sunny day! Sixteen of us set out for Kahuranaki, the highest point in Hawke's Bay outside the ranges in the west. The majority met at Pernel before moving on through Hastings to pick up people at Havelock North. The road up Kahuranaki is a steady but not difficult trudge to the top where we had our lunch with magnificent views to enjoy. The breeze was a little chilly at such a height so we soon began the return journey. Some of the girls began gathering mushrooms but the majority were anxious to get into a warmer zone. On the way down we were entertained by a plane dropping fertilizer below us. It first did a reconnaissance flight then returned to a landing strip to fill up. From there it staggered into the air, dropping its load on a piece of land. It repeated this exercise several time. Fred told us that they have three minutes each time to complete the drop otherwise it gets very expensive for the farmer. Soon we were back to the truck and loaded up by around 2.30pm. Another great Wednesday trip.

BC

Party: Alasdair Shaw, Christine Hardie, Rodger Burn, Penny Isherwood, Graeme May, Heather Stephenson, Marion Nicholson, Susan Lopdell, Fred Chesterman, Bobby Couchman (organiser), Pauline Mahoney, Judy McBride, Sue Taylor, Denise Philpott, Ray Manning, Glenda Hooper

#2249

Northern Taranaki FP

ANZAC 25-27 April 2014

A Party: ANZCAC Day and the gravel road behind Shannon up to the two reservoirs and Mangahao Dam is very windy, steep in places and slow, taking about an hour to do not very many kilometres. There had been steady, light rain which turned to torrential rain at the second reservoir causing torrents to run out of insignificant little side creeks and even drains. We hoped this was not the pattern for the day although the forecast was for rain, easing later in the day. It all stopped at the actual dam but the overflow was going full bore with incredible amounts of water hurtling through. The A party got away at around 11a.m. heading for Mangahao Flats Hut in dry weather. However, heavy showers and high winds came through.



Anne crosses the river in a high wind

The first challenge turned out to be the main bridge across the Mangahao which became a 'flying bridge' due to the gale-force winds [maybe 90-100km/hr] blowing straight up the valley. Anne tackled it first and looked like she was riding a bucking horse! I was relieved when we were all across.

The next side creek [Harris Creek] being bridged was good but Barra Stream and the one just before the hut were tricky to negotiate. Torchlight was needed a little before the hut too. We were the only ones there that night, got a fire going and a good rest. Away about 7.30 on the Saturday and up the valley. The plan was for Anne and me [for an extra challenge] to find the long-disused Triangle Spur track which heads up to Mt Dundas from where the old Avalanche Flats Hut used to be a decade or so ago. Christine, Allan and Janice carried on up to Girdlestone Saddle and on to Te Matawai Hut. I had read reports of Triangle Spur taking about four hours, but it took Anne and me about 5 ½! There was a 950m [3200ft] climb of rock and bluffs above the bushline. The bush part still had the track remnants in good order in some places. My time budget was blown, getting to Dundas 90 minutes later than anticipated. I tried for getting to Arete Peak by dark - which we achieved - and actually got on to Pukematawai Peak by dark. Travel on the tops was much faster. Down the steep, mostly rocky ridge for a couple of hours, changing batteries on the way too. We could see two-man Arete Biv on the eastern side of the range and considered it but thought that the crew at Te Matawai would be worried about us [so much for that!] so we punched on in the dark, arriving at 8.15 with them all fast asleep! We had had a very hard, nearly 13-hour day so were pleased to be at the hut for a quick meal and bed!

Away before eight o'clock on Sunday and out via Butchers Saddle to Richards Knob then down Gable End Ridge to Poads Road ending at the Ohau River. This took longer than expected even at a good pace but we had to walk a couple of extra kilometres as the truck could not get over the bridge to the road end. From there to Dannevirke took us to dinner time or about 5.30; we decided to have a meal at the food shop opposite KFC, all having different fare but sitting at tables pulled together which made a neat 'family' end to the trip. Many thanks again to Lex for driving us, especially the long reverse in the rain! [Sorry, Lex]JM

Party: John Montgomerie [organiser] Anne Cantrick, Alan Petersen, Christine Snook, Janice Love

Party B: In the early hours of Anzac Day, about the same time as the start of all the Dawn Parades, the truck left Pernel Orchard on a warm autumn day. There was a remarkable sunrise: a fusion of red, yellow and orange across the sky and, as we went further south, on came the windscreen wipers. Turning east at Shannon, along Mangahao Road, the heavens opened and heavy rain set in. The road became a stream and visibility poor. We passed the power station and, shortly after the white water slalom course, was Reservoir Number 3. We stopped at the second dam, mistakenly thinking it was our destination so waited for the rain to ease before reversing back onto the main road and travelling another 8-10 kilometres to the No. 1 dam with a large grassy clearing and a toilet block - suitable for camping. The rain had almost stopped and whilst the A group prepared to leave we walked over to the spillway to witness a vast volume of water careening over the dam. We erected the small awning, having to re adjust it many times during the afternoon due to the rain and strong winds while we whiled away the time inside the truck, reading and doing crosswords. We thought at times of the others trudging up the valley. Glenda and I got truck weary so donned our parkas and set off for a walk of about 1½ hours alongside the dam, returning to cook our meals without rain. In the last remaining daylight we wandered along the road to look at various buildings.

Saturday dawned fine and we set off along the Mangahao Flats track, the first half beside the dam and crossed two swing bridges - the second had its support structure twisted which we have since reported to DoC. Very nice forest and in true summer conditions would have been perfect. We crossed one unbridged stream [and that was not difficult] before lunching in brilliant sunshine beside the river. One of the party managed to entangle herself in bush-lawyer whilst clambering up from the riverbed, another managed to submerge herself by slipping off tree roots into the dam and even the men didn't remain unscathed. We met a local hunter who said that in very dry conditions a vehicle could drive across the dam which would have one third of the water we could see now.

On Sunday we departed from our campsite, stopping off to view dam no. 3. We looked for the hard-to-find entrance of the Te Araroa track (Mangahao-Makahiko) before turning off on the road for Burton's track. Oh no!!! Like the other Te Araroa track entrance, we found this one difficult and wasted 30 minutes toing and froing. Finally, we decided where to start from by following an old road through regenerating bush till we found a sign saying Burton's Track. This is an easy tramping/cycling track, muddy in places, well- benched, following streams and in young bush. We had decided to walk for an hour, lunch then retrace our footsteps as we had to drive to the back of Levin to collect the others.

We stopped by the bridge at Poads Road as the truck was over the bridge limit. Susan set off to walk the 30 minutes to the start of the track and, after an hour, five tired-looking trampers emerged. The clibbornette was turned on and everyone had hot drinks with a bite to eat while regaling each other with the weekend's activities. We stopped off in Dannevirke shortly after 6.00pm for a meal and to have everyone sitting together around a couple of tables at the end of a tramp capped off the weekend. My thanks to all who came and special thanks to Lex and John.

Party: Glenda Hooper, Derek Boshier, Penny Isherwood, Lex Smith, Susan Lopdell (organiser), Rodger Burn, Geoff Clibborn.

| | | |
|--------------|--------------------------|-----------------------|
| #2250 | Holts Forest Walk | Wed 7 May 2014 |
|--------------|--------------------------|-----------------------|

A team of 22 members met at Holt's Forest to have a guided tour by Sandy Hampton, a trustee and caretaker of the forest. After introducing his forestry background he told the story of how Mr and Mrs Harold Holt in 1933 bought some land at Waikoau and planted redwoods, firs, Canadian spruce and cedars. Native trees were also planted and these produced seed for natural regeneration. We were all intrigued by the stand of kauri and learned how they self-prune. Beneath them, we could see evidence of regeneration since the planting in 1943. Many majestic trees had us craning our necks to see the beauty of this forest and of course the autumn colours in all their glory.

It was a very educational three hours with Sandy who gave us detail, vital statistics and stories of any tree we stopped to observe. I'm sure we all went home remembering such attractions as 'Sandy's pet tree' (Colorado white fir) micro risers, king ferns and the feel of the soft 'carpet' of rimu beneath our feet. Thank you ,

Pauline for contacting and bringing Sandy to talk to us. A Holts Forest trip is a wonderful outing to take visitors and a superb place for children to explore. Word of mouth is great advertising!!

Party: Christine Hardie (driver), Rodger Burn, Bobby Couchman, Peter Washington, Scott Campbell, Marion Nicholson, Fred Chesterman, Alasdair Shaw, Garry Smith, Heather Stephenson, Penny Isherwood, Pauline Mahoney, Graeme and Tracy May, Bruce and Christine Turner, Annetta Keys, Judy McBride, Cathy Wakefield, Pam Pike, Geoff Clibborn, Janice Love

#2251

Central Plateau - Ruapehu

16 - 18 May 2014

Combined HTC and Wanganui Tramping Club Weekend

Friday: Ohakune to Horopito on the Old Coach Road with a 6.00am start from Pernel in light rain. A drive through mist on the hills but once in Ohakune the skies clear to promise a perfect day. We are welcomed by Dave, Doris and Mike from the Wanganui Club and joined by Derek from Tauranga. The Old Coach Road is not only very pleasant walking with wide views and beautiful bush but also has extremely well-presented information points along the way. It must have been a massive undertaking in those early days and a challenging journey by coach. As well as the road itself, there is significant railway history with excellent information boards and appropriate metal sculptures.

Our walk takes us over one OLD railway viaduct where we break for lunch. "The Northerner " passes by on the NEW bridge close by. We pass two new and two old viaducts as well as interesting bush with mature trees as we head to Horopito. Then on to Possum Lodge, the Wanganui cottage near Raurimu, for Happy Hour at 5.00pm and a great meal provided by H.T.C before a most convivial evening.

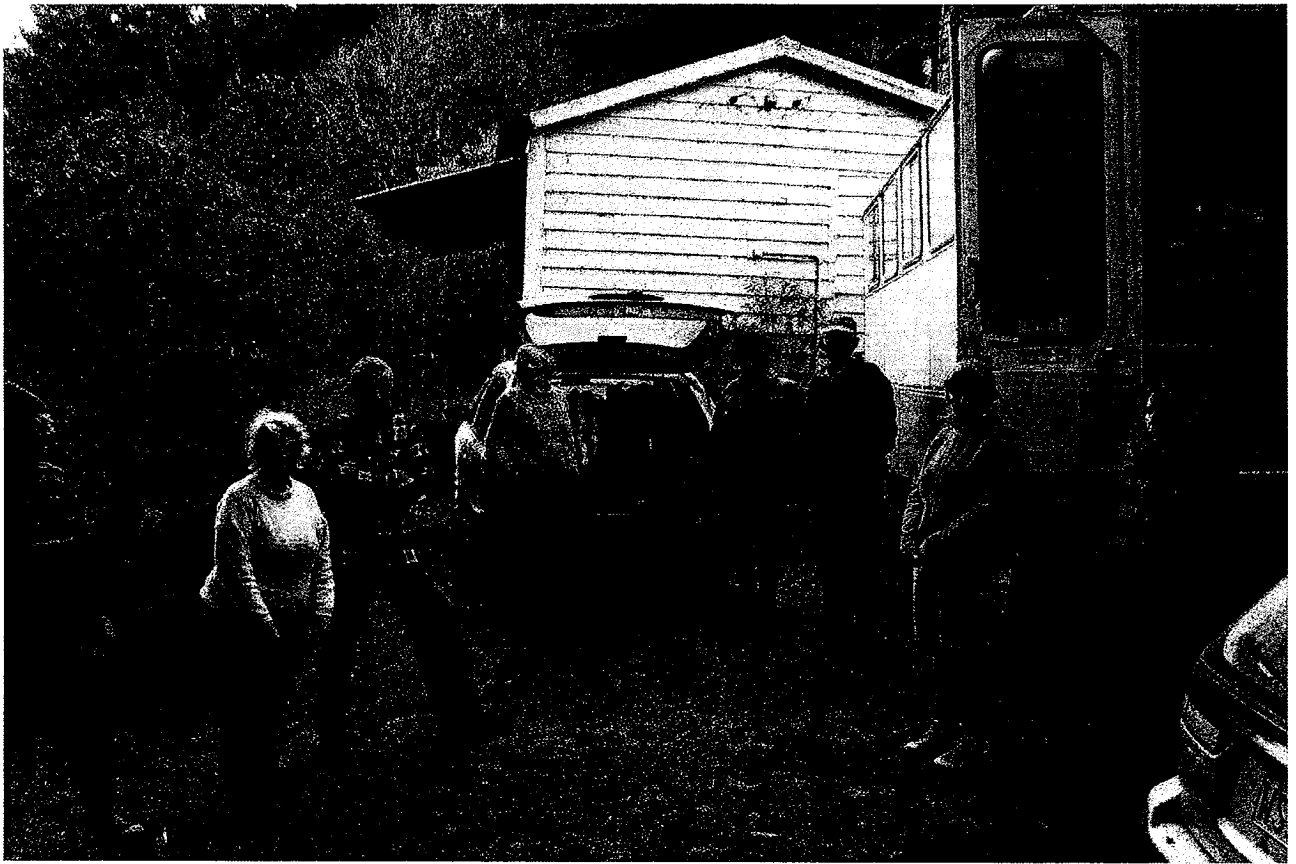
Saturday: Whakapapa Valley to Scoria Flat and return via Silica Springs. A frosty morning and an early start but the views of the mountains are spectacular; new snow and a cloudless blue sky. The track from Whakapapa Village is variously UP, DOWN, DRY, WET, and, in shady places, VERY SLIPPERY with frost. At lunchtime the party divides into two groups, one to complete the full circuit and another to return the same way back to the truck. The two groups re-unite before returning to Possum Lodge for another Happy Hour. The meal this evening is provided by the Wanganui Club. The lodge electricity is provided by a generator which limits the amount of "take-off power" that can be used. On this evening there are some issues and consternation but Geoff and Alan [now arrived from Auckland] have lots to contribute by way of suggestions for improved economy of use!! Their input is much appreciated by the Wanganui folk.

Sunday: Sash and Door Loop Track from National Park. This name refers to the Sash and Door Company in Marton which logged here for timber. The track follows the old bush tram tracks developed by that firm as they extracted timber. Old sleepers, some metal tracks, drainage ditches and cuttings are all in evidence.

Re-growth in some areas is good with plenty of trees to admire. In others there will need to be more time for the natives to take over. Some excellent blue fungi were much photographed. Signage gave some historical information but this is a work in progress. All this work is done by volunteers so.... a big thank-you to them. Home safely on Sunday evening, thanks to our long-suffering driver, after a great weekend. Thank you, Lex, and a huge thank you to Susan for her organisation.

HTC Party: Sue Lopdell, Lex Smith, Annetta Keys, Christine Snook, Geoff Clibborn, Scott Campbell, John Montgomerie, Derek Boshier, Alan Peterson, Penny Isherwood

WTC Party: Dave Scoullar, Esther Williams, Monique Weir, Doris Hamlin, Mike Cole



At Wanganui Tramping Club's Possum Lodge near Raurimu



Former Main Trunk railway viaduct – replaced by a new bridge nearby

#2252

Napier Hill

Wed 21 May 2014

What a turn-out!! Could be a record!! The list of names may be longer than the report?

Meeting at the Aquarium, we welcomed four new folk to our group - Margaret and Tina, Pat and Nancy. We look forward to seeing them all again. The walk along the Marine Parade warmed up the legs before heading up and up via Coote and Lighthouse Roads to the Bluff Hill Lookout. An early morning tea break was enjoyed in the sunshine at the picnic tables there.

From there it was DOWN, UP, DOWN, UP!! The steps were a challenge in a couple of places, for both the UPs and the DOWNS. {Knees?} For a few this was new territory - the leader included - but most of the planned route was negotiated before arriving back on Marine Parade quite early. Lunch and general chit-chat near the Tom Parker Fountain was relaxing before heading back to the Aquarium.

Party: Bobby Couchman, Heather Stephenson, Christine Hardie, Margaret Graham, Janice Love, Rodger Burn, Barbara Phillips, Brent Hickey, Scott Campbell, Lex and Anne Smith, Keith Thomson, Anne Cantrick, Pauline Mahoney, Alasdair Shaw, Joan Ruffell, Graeme and Tracy May, Bruce and Christine Turner, Marion Nicholson, Pat Hill, Nancy Smith, Penny Isherwood, Margaret Ericksen, Tina Duley

#2253

Waikaremoana

Queen's BD 31 May – 2 June 2014

A Party: MANUOHA – SANDY BAY – ANIWANIWA.

The trip up was fair but indicating that rain coming as per forecast. Fuelling up at Wairoa gave all the troops the opportunity to top up on goodies at the Mobil mart or to make up for a quick breakfast at home. Closer to the lake, drizzle and fog became constant so views were very limited until the road at the bluffs [towards Hopuruahine] where finally the conditions gave views up the lake. At around 10.30am the five A party people booted up and off but soon got off trail - rough as it was – probably following others who had done the same. Back on track, the steep start gained us some height quickly. Recent footprints were seen – we hoped they were not at the hut tonight! Onwards, unfortunately all in fog/cloud which afforded no views. Christine damaged a knee which necessitated Ross and me taking over half her pack contents each! As altitude was gained towards the day's end, the goblin forest became more pronounced and enchanting - with imaginations running riot there were amazing magic scenes to see. But oh, at the hut were three guys from Gisborne on the same trip as us. I had been told by DoC at Aniwanika that the track had been cut a week ago but there was gear in the hut and evidence of recent habitation such as fuels cans. At around 6.30pm [outside wet and very dark] we all considered they probably had gone out for the long weekend so decided to pack up all the clothing and sleeping gear under the bunks. But, as I was later unpacking on the porch, out of the corner of my eye I saw someone approaching. Damn, I thought, and there were two more to come! So we had eleven in a six- bunk hut. The gang boss was very unworried about the upheaval. Two of them slept on the floor and the rest shared the little room left on the bunks. Little sleep was had with the crush and, with the fire that the contractor had got going, at 11pm the temperature on the top bunks was 27 degrees!

Off at about 8am in the same foggy, drizzly conditions; just a shame that we had not got a view from Manuoha Trig the previous evening [but then we were in torch light for the last part]. The track was brand new from here, following the tops along until dropping down to the dry lakes where we met a group of nine from the Pukekohe TC. Sandy Bay Hut was welcome and bunks for all [booked] were bagged. We had afternoon tea as we were there about 3.30pm. No hurry re dinners so chatted with the Pukekohe people and relaxed. Still drizzle and fog! A good night's sleep this time and a start before eight out to the lake-end shelter for a break, arriving at the same time as Sue and Glenda. On down to the main road to meet the truck, tidy up and head for home at about 1.30pm. There had to be a compulsory stop at Osler's Bakery in Wairoa, of course, as we were early and justified this! Many thanks to Peter Berry for the driving. JM

A Trampers: John Montgomerie [organiser] Christine Snook, Mary Gray, Ross Berry, Anne Cantrick

B Party: ten happy trampers left Hastings at 6am Saturday, heading north towards Waikaremoana. We finally got to Manuoha, A Party drop-off point at around 10.00am. Having deposited five members, we

headed back to the MokauTarns Track car-park to commence our walk for the day. This is a lovely track without too many contours to trip over and it took about two hours to reach the tarns. A loop track at the tarns enabled us to pass three different tarns before heading back to the truck. We then drove back to the Aniwanuiwa Camping Ground and a "Fisherman's Cabin" which was our accommodation for the two nights. After dinner Peter and Glenda taught the rest how to play Quibbler, a card game for word-a-holics.

Sunday morning was reasonably fine and we walked from the campground to the start of the Ngamoko Track which is near where the Old Lake House was. Ngamoka Trig is at 1099 m, some 500 m above the lake level so we took our time as we made our way up there. We viewed the giant rata tree which is about 20 minutes from the road and enjoyed the lush ferns and fungi along the trail. After two and a bit hours we came to a rocky outcrop where we had our lunch before carrying on for a further 30 minutes to the trig. Unfortunately, visibility was zilch and there was no sign of the lake. The trip down was slightly faster than the upwards one and we took the second half of the Tawa Track for variety. Back at the campground we had plenty of time to cook our dinners after which we had another entertaining game of Quibbler.

Monday morning dawned damp, very damp, and it was difficult to motivate the troops. However Susan and I "manfully" braved the elements and headed up to Lake Waikareiti to meet the A Party. We arrived at Waikareiti Shelter at much the same time as the A party and, after taking in yet another almost non-existent view, we walked back down to the truck more-or-less together. We had hoped to fuel up (our bodies) at the camping ground shop but they were closed for lunch so their loss was Osler's gain when we stopped for pies before heading back to Hastings. Many thanks, Peter for driving. GH

B Trampers: Peter Berry, Penny Isherwood, Geoff Clibborn, Susan Lopdell, Glenda Hooper

| | | |
|--------------|--------------------------------|------------------------|
| #2254 | Boundary Stream Reserve | Wed 4 June 2014 |
|--------------|--------------------------------|------------------------|

Partly cloudy but not raining so we went anyway. As we got closer I could see a large white cloud blanketing the Maungaharuru Range and Bell Rock so we stopped further down the road at the DoC shelter where there are several other tracks. We chose a two hour circuit through beautiful bush teeming with bird life. Back at the shelter for a late lunch made even more enjoyable by two hand-reared kaka flying about (waiting for the DoC helpers coming to feed them). The tracks were in very good order and a happy day was had by all. JMc

Party: Christine Hardie, Roy Frost, Richard Waterer, Pat Hill, Penny Isherwood, Keith Thomson, Margaret Ericksen, Sue Taylor, Garry Smith, Joan Ruffell, Murray Atkin, Heather Stephenson, Pauline Mahoney, Judy McBride, Jim Hewes

| | | |
|--------------|--------------------|---------------------|
| #2255 | Hinerua Hut | 15 June 2014 |
|--------------|--------------------|---------------------|

There were only three starters for this tramp so we took Peter's little blue Sirion. Having got the necessary permission we were able to park at the super bin on Alder Road (after the four fords on the track which were rather challenging for the car) and then walk up the farm track to the forest park. There are great views to be had from the farm land and we were able to look down to Khyber Pass where all three of us had been a few months earlier. It took about an hour to get to the Forest Park from where we followed the well cut track to Hinerua Hut. The day was fine but there had been a heavy frost as evidenced by the ice remaining in the puddles as we walked upwards. We got to the hut not long after 11.00am where we left Peter and carried on up to the tops. There were great views up there and we spent a bit of time digitally capturing them before settling down, out of the wind, for some lunch. After lunch we went back to the hut where Peter was trying to keep himself warm and followed our footsteps back down. We met the Fitzgeralds at their bach and had a good natter before descending to the car and heading home. GH

Party: Des Smith, Peter Berry, Glenda Hooper

#2256

Birthday Boys and Girls Bash

18 – 20 June 2014

This year Pam acted as our host at her farmhouse at Puketitiri and glorious weather was turned on for us. Pam had gone up the night before and the house was nice and warm by the time we "Oldies" drifted in on



Wednesday morning, laden with a whole range of delicacies. On arrival Graeme decided to mow the lawns in front of the house and Brent pruned the vines while the rest of us just watched. Pam served up a great soup for lunch and afterwards we all went along the Ramage Track which connects up with Whittles Track in Balls Clearing Scenic Reserve across the road. We stopped frequently to admire the high canopy of rimu, kahikatea, and red beech. All this took time but we eventually arrived back at Base Camp for tea, cakes and more cakes. It all started to look more like a Master Chef convention than a

tramping club outing.

On Wednesday evening Peter led us in a sing-song with various selections of music from his vast repertoire and it was about midnight before we retired.



Thursday was Jim's birthday and we burst into song over breakfast for the occasion. Peter and Brent disappeared up Kaweka Road just past the quarry looking for an old track (which they found) while back at base the lads replaced a window in Pam's garage. Some had to leave on Thursday afternoon and, as all the jobs were done, we just basked in the sun before spending the evening debating the world's problems (there are a few). After a clean-up on Friday morning we left, having had two wonderful days with Pam. Once again, thanks for her hospitality. RB

Party: Dave Mulinder, Garry Smith, Liz Pindar, Christine Hardie, Jim Hewes, Rodger Burn, Randall Goldfinch, Heather Stephenson, Pam Turner, Penny Isherwood, Brent Hickey, Graeme Hare, Peter Pavarotti Berry

#2257

Hot Water Beach Tarawera

27 - 29 June 2014

After a disappointing turn-out, six trampers left Pernel at 3pm on the Friday - this to be considerate to those who still work - and headed to Taupo for an evening meal. Before going any further I need to thank David for driving for without his service the trip would not have gone ahead. I was lucky enough to sit in front with David and who should be in the middle but David's elder daughter, Keri, a delightful girl who never had any

sleep until almost back home. In Taupo we all seemed to have different menus on our minds, then back to the truck and away at about 6pm, heading for our camp site on the shores of Lake Rerewhakaaitu. The sunrise was stunning and promised a lovely day and so it was. After dropping the camp fees for the site at Hot Water Beach in to Rotorua office, it was a short drive down Tarawera Road to the landing. People were fishing off the beach and there seemed to be lots of cars with boat trailers parked. This weekend was the last of the fishing season and there was a competition. David found Anne and Lex at the lock-up car park back up the hill and brought them down to the landing.

We all headed off, taking the short cut. David, Anne and Keri came along for an hour and a half then returned to the top carpark for the night. Some of us made use of the toilets along the track plus the tables provided where we had breaks. From our lunch spot there is a side track to another hot pool area where two of the party took the 10 min walk to view. It was thought there were about 20 people in the pool but, sadly, no camping allowed. We regrouped and reached Hot Water Beach together, dropping down approx 40 steps.

The hot springs were very disappointing as there were really no hot pools, just very hot water coming out of the bank. It was so hot that there were signs warning of burning. The hot water layered on the top surface of the cold lake water and one had to keep stirring to keep the temperature even. It was a quick paddle for most but Lex managed to sit in it almost waist deep. At the back of the camp is a cooking shelter - a little drafty but a long stainless steel bench and a centre table had us all comfortably cooking our dinners; even puddings. The quiet evening was shattered by a couple of rowdy fishermen and someone told them to be reasonable and keep the noise down in the early hours of the morning. Maureen was camped between two tents with snorers and Lex said it was 2 degrees in his tent. We all seemed to sleep well and woke to a foggy Lake Tarawera which gave off an airy impression. It lifted to reveal another beautiful day.

After John telling us how wonderful the first hot pool was I decided to let them go on ahead and have a dip while Alan and I enjoyed the trees, birds and views along the way back. Margaret and I seemed to be the only ones who saw the bright red twisted trunk of an ake ake tree and decided to keep an eye out for it. The last part of the return to the truck was a good steady climb. The new lock-up area is well laid out with toilets and car parks. On our way home there was a short stop at Kerosene Creek which is a hot water stream. There are many places to have a good dip along this stream and there were lots of people there - well worth a visit when passing any time. Lex guided us to the Prime Roast shop in Taupo for dinner before we headed home.

CS

Party: Lex Smith, Alan Petersen, John Montgomerie, Maureen Broad, Margaret Graham, Brent Hickey, Christine Snook (organiser), David Blake (driver) Keri Blake

| | | |
|-------|-------------|-----------------|
| #2258 | Lake Tutira | Wed 2 July 2014 |
|-------|-------------|-----------------|

A smallish group of ten enjoyed a day in the Tutira area. After arriving at the lake and deliberating, we decided to head towards Table Mountain. The weather was good with little wind at the lower level. Going up the Kahikanui track, we met the usual mud before breaking out onto the tussock and strong wind. Turning south just before Ridgemount Road we followed the track which sidles below the tops and took in the magnificent views to the lakes while noting the ominous cloud built up over the ranges. At this stage Janice took Barbara and Pauline up a steep spur to the tops whilst the rest of us took the lazy option and carried on along the track, meeting the Napier mid-weekers coming up. Before long we were back at the lakeside picnic area for lunch; Janice and the real trampers joined us a little later.

Black clouds were approaching and, just after we got back into the truck, a savage hail storm hit us. The noise was deafening but within 10 minutes we had driven out of it and back into sunshine. A very pleasant day and thanks to Christine for driving.

RB

Party: Janice Love, Pauline Mahoney, Barbara Phillips, Judy McBride, Christine Hardie, Penny Isherwood, Ray Manning, Roy Frost, Garry Smith, Rodger Burn,



| | | |
|--------------|------------------------------------|---------------------|
| #2259 | Waipawa River Track Cutting | 13 July 2014 |
|--------------|------------------------------------|---------------------|

A small team of five had a day in the Waipawa River marking and cutting the track on the shingle terraces above the river bed, mainly on the true left bank upstream from Waipawa Chalet. On two recent previous occasions, Eighteen, then six months ago, this route has had track work done by small HTC groups. The prime indicators of the track entrances used to be cairns which can easily be missed. Now, very prominent orange plastic tape and orange track markers encourage anyone going upstream to use the river terraces. The more use it gets the better the track surface will be. As the vegetation is soft and quick-growing it will need cutting in the future, and it needs a spade to improve the drainage in a couple of spots.

Heavy rain in May has caused slips and erosion in the upper reaches of the river, changing the route surface. We did not work in this area, leaving it to future visitors to set the best route. Thanks to the team who came and did the work. It was a nice day to be in the hills even if we were not as warm as the city dwellers we left at home who were basking in sunshine.

GRH

Party: John Montgomerie, Susan Lopdell, Glenda Hooper, Anne Cantrick, Graeme Hare

| | | |
|--------------|-----------------------------------|--------------------------|
| #2260 | Blue Range Hut, Tararua FP | 26 - 27 July 2014 |
|--------------|-----------------------------------|--------------------------|

As there were insufficient people for the truck, three of us left Havelock North at the leisurely hour of 7.30am. Very little traffic on the road, the compulsory stop at Dannevirke and we arrived at the Kiriwhakapapa roadend in just over two hours. In 2010 DoC was trying to develop a picnic area and, with the heavy rainfall at the time, it was a real quagmire. Today it is a nice grassed area with flax and cabbage trees planted in the wetter areas, a shelter with a monster of an outdoor table and bench seats plus a toilet block. As we were about to set off, a group from the Palmerston North Tramping and Mountaineering Club arrived, their destination being Cow Creek Hut - they were on a "hut bagging" trip. It was a fabulous winter's day, slightly cool with the sun shining. We set off on a benched track following a stream before crossing a footbridge and walking through a grove of redwoods of varying sizes. Slowly we began climbing on a well-maintained track with occasional boggy patches, tree roots and strategically placed flat areas where we were able to gather our breath. The forest is mainly beech with rimu, miro and maire and, as we got higher, we saw totara. There were also several mistletoe growing, the occasional small fungi and plenty of birdlife. A local contractor had laid poison back in June this year and birds seen included kereru, tomtits, grey warblers, tui, whiteheads (two big flocks). We heard a kaka, rifleman and, we think, bellbirds.

August 2014

Blue Range hut is owned by Masterton Tramping Club and sits nestled on the end of a ridge, complete with a picnic table from which one can sit and gaze across the main range to Dundas and Mitre Peaks. As stated in the DoC website blog, it had signs from the old Masterton hospital on the inside and outside of the hut. Although an old hut, it was full of character, well maintained and had recently had a new Waggoner wood stove installed. It has four bunks and a young couple, newish to tramping, was already there so Glenda and I top and tailed. Both of us complained that we didn't have a great night's sleep!

Sunday morning dawned very cold with cloudy skies and slightly windy. After wishing Glenda, "Happy Birthday" (the BIG 60) we cleaned up the hut and slowly meandered our way back. We stopped at the junction of the old tramway but no-one was enthused to do any more tramping. It was back to the Black Stump Cafe in Dannevirke and I arrived home at 3.00pm. A very leisurely tramp had been enjoyed by all in some beautiful forest.

Party: Mary Gray, Glenda Hooper, Susan Lopdell

| | | |
|-------|-----------------------------|------------------|
| #2261 | Te Mata Park – Havelock Nth | Wed 30 July 2014 |
|-------|-----------------------------|------------------|

This Wednesday we seemed to have ticked all the right boxes with great weather, popular locality and the option of a cafe stop afterwards. Twenty of us met at the Te Mata Park Road main carpark and immediately set off up the first of the new tracks behind Peak Restaurant. We emerged at the saddle lookout and crossed the road to follow another of the new tracks designated walkers only. We stopped to admire the views to the western ranges before heading down through older tracks and up to the saddle just above the karaka trees where we had a decent smoko and soaked up the sun and views.

We followed the track along by the Karaka trees and looked at the planting work done by volunteer groups before completing our circuit via a lookout. We chugged down and up the last new part of the pathways before heading back to the car-park.

Our route today was new to many in the party and after the walk about a dozen of us went to Tandem Cafe for late lunch, a fitting end to a good morning.

RB

Party: Penny Isherwood, Barbara Phillips, Janice Love, Judy McBride, Marion Nicholson, Christine Hardie, Denise Philpott, Pam Pike, Pauline and Brien Mahoney, Bruce and Christine Turner, Marjorie Musson, Roy Frost, Bob Carter, Keith Thomson, Garry Smith, Richard Waterer, Brent Hickey, Rodger Burn

From the Archives

Twenty-Four Years Ago

This previously unpublished trip report will be divided into five parts. It records how Selwyn Hawthorne and current HTC member, Mike Bull achieved their goal of tramping from the west to the east of the mid-North Island. They each had certain skills of planning, ham radio knowledge and tramping but there was heaps of work to do on logistics, equipment and route knowledge to make it happen. All of this required motivation and great attention to detail.

The Long Walk Home

Selwyn and Mike's East-West Journey
27 December 1990 – 25 January 1991

August 2014

Section One

27 December 1990 - this was it! After nearly 18 months of planning, Selwyn and Heather were parked up my drive. I loaded my Hallmark Everest pack (complete with red side pockets) into the back of the ute and I was saying goodbye to the family. We left Napier at 0715 to arrive in Palmerston North by 1000. A quick bit of last minute shopping at Alp Sports, smoko, a few groceries and off to Stratford. The motor journey west was interrupted by hot salty chips for lunch at Wanganui. I hadn't been this way for many years. So when Mount Egmont/Taranaki loomed large in the distance, it was quite a surprise. Click, whirr, the first of 300 slides was in the bag. My film for the journey was courtesy of the Napier Fire Brigade Social Club, a presentation gift on the occasion of my 25 year Gold Star. After trying to sort out transport for 2nd January, (we didn't succeed and it didn't really matter) we headed for Mountain House (East Egmont), arranging with mine host to leave our tucker box for leg two in safe storage, plus a blank zip-zap impression. It was soon time to don our tramping gear, climb into our packs and start walking.

Well, not quite yet - time for a photo session. Gary ZL2VL and his son, Craig seemed to pop out of nowhere to say cheerio; a pleasant surprise. I can recall telling Gary of our departure time and, as he was in New Plymouth to see his family, he took time out to catch up with us before we disappeared. Posing by the East Egmont sign we sure looked the part although Christmas excesses were evident as we clicked up our pack belts! Heather walked a little way with us before bidding us farewell and starting her long lonely journey back to Hawke's Bay. Throughout the journey there were many people who in some way supported our effort. Heather was one of them. Selwyn and I are extremely grateful for this support - we literally could not have done what we did without them. A million thank yous.

Leaving East Egmont at 1525 along a pretty easy track, we encountered our first swing bridge with peek-a-boo views of the mountain; arrived at Waingongoro Hut at 1640. It is a sort of Lockwood-style hut, quite large, with separate bunkrooms and we had it all to ourselves. As evening fell the cloud cleared from the top of the mountain giving us a great view of the Shark's Tooth and some appreciation of the size of this volcano. Off to bed in the twilight at 2100. Possums had a ball throughout the night, running up the roof (or dropping onto the roof) and sliding down the skylight.

| | | |
|-----------------|-----------------|--|
| Location: | P20 056090 | Waingongoro Hut |
| The Radio Hour: | Mountain Radio: | ZKKU at 1930. ZKJG at 2000. Both Loud and Clear. |
| | Amateur Radio: | ZL2BCK (Graham), ZL2CZ (Geoff) |

| | | |
|--------------|---------------|--|
| Weather: | Not recorded. | |
| Track Times: | 1525 - 1640 | Stratford Mountain House - Waingongoro Hut |

28 December 1990 - woke at about 0500 to a grey day with drizzle. Or was it just low cloud? Whatever it was, we didn't want it! Breakfast at 0600 and we had moved out by 0740. The cloud at this stage had cleared and the day was shaping up for a cracker. We arrived at Dawson Falls about 0915 to find a mountain cafe. Well, we had a few bob and it might not have been real tramping but, as we were on an adventure, it was okay to duck in for a cuppa and a cup cake. Also at Dawson Falls was an Information Centre that we found pretty interesting and we were able to buy a hut pass for Selwyn.

There are lots of tracks coming and going around Dawson Falls, all of them worthy of exploration. However, being unsure how much time we had to achieve the next hut, we left most of them for another day. It rains and snows a lot around this mountain and there was plenty of evidence of the erosion caused by run-off water heading to the coast. Deep eroded valleys radiated outwards like the spokes in a wheel (with about the same spacing!) from the centre of the cone high above us. We were travelling around this mountain, dealing with each 'spoke' in turn.

We zigzagged up 30 odd metres, across the flat bit, then down 30 odd metres and across the wet bit. Then the process was repeated. Lots of guts - lots of ladders. Some great views of Fanthams Peak as we crossed some of the flat bits. One of the flat bits was boardwalked. (this is a National Park after all!) It was here we stopped for lunch. The bush had thinned out a bit permitting views in most directions. Our lunch stop gave Selwyn the opportunity to surprise me with his little radio - time for the news. Selwyn's little radio could only be heard through little stereo earphones. So there we sat, having lunch, sharing an earphone each, in touch with the world.

Lots of totara through this section of the track - I've never seen it like that before. 1406 and we had arrived at Lake Dive Hut. Another hut to ourselves! But not for long....by bedtime there were 25 people in the hut with two camping outside: ten in our bunkroom including four kids! Lake Dive was created by water backing up behind two volcanic 'pimples' called the Beehives which rise about 70 metres above the landscape. Some great afternoon views of the mountain, bush and lake were enjoyed as we lazed away the rest of the day.

| | | |
|-----------|------------|---------------|
| Location: | P20 015072 | Lake Dive Hut |
|-----------|------------|---------------|

| | | |
|-----------------|-----------------|---|
| The Radio Hour: | Mountain Radio: | ZKKU at 1930 |
| | Amateur Radio: | ZL2BCK (Graham) at 2000. Graham advises all OK from home. |

| | | |
|----------|-------------------------------------|--|
| Weather: | Some southwesterly weather tonight. | |
|----------|-------------------------------------|--|

| | | |
|--------------|-------------|---|
| Track Times: | 0740 - 1405 | Waingongoro Hut - Lake Dive Hut (less 25 minutes for lunch) |
|--------------|-------------|---|

29 December 1990 - woke about 0400, not with noise from our 10 bunk mates (I use earplugs) and not for a leak but with the wind (from southwest like the man said) shaking the billy-o out of the hut! Still very windy when we left at 0720 and I actually thought it was raining. Not so - the wind was whipping water off the lake and the hut was just in the way. We expected two women and their four kids plus a group of Germans to follow us to Waiaua Gorge Hut. So, planning for a jolly good scrub on our arrival, we were keen to keep ahead of them. We enjoyed the sun for about 40 mins before stopping for a drink and some scroggin and on with our raincoats. A rainbow that had been slowly approaching over the last 30 minutes or so finally over took us and the rain set in.

From Lake Dive Hut to the junction with the Taungatara Track took us 1 hour 20 minutes. From this junction through to the junction with the Brames Falls track, it's a bog separated by rivers. In no way does the track follow the map! But, unlike the Dawson Falls to Lake Dive track at least this one was on the map! The river crossings seemed to match the map and the track markings were adequate. It was so wet we lunched standing up and, at times, we were up to our knees in mud. At one point on the journey I just about stepped on a small morepork. Close inspection revealed a bit of damage to the bird. It may have been knocked about by the strong winds that had shaken the hut last night. We tucked him into a sheltered spot at the base of a tree and moved on. Stopping at the Brames Falls turn off, it was time to try out the automatic bit of my camera. Throughout the journey there would be similar opportunities, all with the same result - one picture of Selwyn by himself, the next picture with both of us. I got the hang of it eventually!!



Waiaua Gorge Hut is about 70 metres above the Waiaua River. From the Brames Falls track turn-off, you drop about the same height to get into the river. The track to the hut follows the main river a little way then turns to follow a little side stream, getting steeper and steeper before finally reaching the base of a vertical aluminium ladder. A short final climb up the ladder and you're there. We had arrived at Waiaua Gorge Hut at 1300 still with our raincoats on. Deducting our 30 minute lunch stop, the trip took five hours. We were keen to see how the two women and their four kids had coped with the trip and were sort-of concerned when they didn't turn up for the night. As it turned out we met them further down the tramp

and found that they had gone back to Waingongoro. First to arrive again: time for our pre-planned scrub and time to start to washing machine. The washing machine you ask? Yep. Selwyn's idea: all the dirty stuff into a thick plastic bag, some H₂O and Cold Water Surf then massage, squeeze, slop, shake until exhausted. Empty, ring clothes, add fresh H₂O, then pass to tramping mate for the rinse cycle. Squeeze, shake then hang

Pohokura

out to dry, smelling lemon-fresh as well! As mentioned before, the hut is about 70 metres up on the true right of the gorge. Not too much flat land for tenting so when this German (I think) couple arrived after dark, setting up on the helipad would have seemed a good choice. I'm not sure what their reaction was in the morning, to find themselves right on the edge of this vertical drop into the gorge!

| | | |
|-----------------|--|---|
| Location: | P20 965084 | Waiau Gorge Hut |
| The Radio Hour: | Mountain Radio: | ZKKU at 1930. |
| | Amateur Radio: | ZL2BCK (Graham), ZL2CZ (Geoff) and ZL1GQ (?) at 2000. |
| Weather: | Scattered rain. Westerlies strong to gusting. Freezing level 2500m | |
| Track Times: | 0720 - 1300 | Lake Dive Hut - Waiuau Gorge Hut (less 40 mins for lunch) |

30 December 1990 - not a good night but rested okay. Powdered egg, beautifully prepared by Selwyn, was for breakfast but this did not sit too well with me. Maybe it was the MSG in the bacon bits. Whatever it was I sure appreciated the donation of a bowl of muesli from our hut mates who were also able to help Selwyn with a drink bottle. Across the footbridge and past the Oaonui Hut site (it says disused on the map but it is actually not there!) and along Oaonui Track without too much bother. Weather, as forecast, was to restrict our views through the day. Turning right at the Kahui/Oaonui/Waiweranui track junctions, it was a delightful climb of about 300 metres to Kahui Hut. We arrived at 1050 after leaving Waiuau Gorge at 0750 - three hours. Kahui Hut is sort of a swept-up version of the typical Kaweka Forest Park Hut. It was lined and painted inside, and had a separate bunkroom. Time for a cuppa. It was quite cold, both inside and out and the cloud had hidden the spectacular view to the west. About this stage of The Long Walk Home we noticed that we had begun to develop some 'habits'. One such habit was to stop for a drink and scrog every time Selwyn's watch beeped the hour.

We left Kahui Hut at 1200 (on the beep) missing the Big and Little Pyramids in the cloud to arrive at Holly Hut at 1500 (on the beep). The weather was cloudy with cold south-westerly winds all day and some hail as we climbed up to Little Pyramid. However, it had cleared gradually over the last hour of our day's journey to be mostly in sun as we crossed Peters Stream and Holly Flat, a few minutes from the hut. It was still windy thought and the cloud wasn't too far away. Off to bed about 2130

| | | |
|-----------------|--|--|
| Location: | P20 004150 | Holly Hut |
| The Radio Hour: | Mountain Radio: | ZKKU at 1930. |
| | Amateur Radio: | ZL2BCK (Graham), ZL2CZ (Geoff) ZL2LF (Peter) ZL2AYY (Terry) who was cycling up the Wairau Valley into a very strong head wind, ZL1GQ (?) |
| Weather: | Some cloud and strong and gusty westerlies | |
| Track Times: | 0750 - 1050 | Waiuau Gorge Hut - Kahui Hut |
| | 1200 - 1500 | Kahui Hut - Holly Hut |

31 December 1990 - a good night's sleep; the best yet. Woke late - didn't get up until 0900 - and with the weather still from the south-west, windy and cold it was nice to be thinking about a day by the fire. Today was one of the planned rest days. All those who had shared the hut with us went their separate ways, two Aussies to Waiuau Gorge, Dad and his two boys to Pouakai Hut, two Scotswomen to the road end (may see them again at East Egmont) Selwyn made scones for morning tea while I spent some time using my Swiss Army knife to shave slivers off the blocks of wood supplied by DoC. The fire had gone out and there was no axe to split them into something that would fit into the firebox! Real MacGyver stuff, eh?! After our lunch we took a trip around The Dome to check out Bell Falls and then down Ahukawakawa Track to the Sphagnum Moss Swamp. The wind was a bit chilly so it was hat and coat stuff. However the sun on our backs made it all worthwhile. Hut mates for New Year's Eve were dawdling in. The latter part of the day was spent sprawled out on the grass in front of the hut chatting to them while we waited for the cloud to completely clear from the mountain for the photo opportunity. Later we played Euchre with our hut mates including one chap from Germany who was winning hands down. Part-way through the umpteenth game he asked which cards were clubs! We showed him and he held up a spade and said, "So what are these?" We gave up after that!

August 2014

Pohokura

| | | |
|-----------------|-------------------------------|---|
| Location: | P20 004150 | Holly Hut |
| The Radio Hour: | Mountain Radio: | ZKKU at 1930 |
| | Amateur Radio: | ZL2BCK (Graham), ZL2CZ (Geoff), ZL2LF (Peter), ZL3DK(Dave), ZL1AGG (?) and ZL2MB (John) at 2000 |
| Weather: | Cloudy with scattered showers | |
| Track Times: | | Day tripping around Holly Hut - two hours |

1st January 1991 - Happy New Year! Left Holly Hut, on a super day, for East Egmont at 0720. Wall-to-wall blue and views as far away as New Plymouth in the distance with the power station chimney marking the city for us. We climbed The Razorback up to Humphries Castle and didn't know it as the economic debate we were enjoying was pretty intense. Around to Tahurangi, impressive views to Tongariro National Park on the far eastern horizon were our company. Shirtsleeves stuff at 1400 metres with profuse sweating keeping us at our drink bottles. There is a private lodge at Tahurangi along with a TV transmitter tower. From here the track to the top is stepped. This keeps all the boots off the delicate alpine flora. We weren't going up but we were most impressed at this runner chap who had just run up The Puffer, on to the steps and just carried on up until he disappeared high above us. Track time from Holly Hut to Jackson's Lookout was normally five hours. It took us six because of all the people we met and stopped to talk with. One Aussie we met at Manganui Lodge asked us about our long putties, questioning if we had much trouble with leeches in NZ! We soon put him straight. Manganui Lodge seems to be where all the skiing is at with ski tows and all the trappings. Not today though as the snow was far above us. There's a cableway here to save you from humping your skis around the track and it was here that we again met the two women and their kids who had shared Lake Dive Hut with us a few days ago.

About two kilometres as the crow flies and about three kilometres as the mountain road wiggled below Jackson's Lookout was Stratford Mountain House: journeys' end, our circumnavigation complete. Although the weather had quietly clouded over as the afternoon wore on, generally it had been very kind and we had enjoyed a real beauty this day. I had booked dinner, bed and breakfast prior to departure and, after being allocated our chalet, it was time for a cuppa. Really neat to have a shower. Real neat to enjoy a punnet of hot salty chips (I'd been dreaming about them!) while Selwyn was enjoying a segment of pizza. Mountain House was excellent although we soon found Swiss mountain music a bit too much after our week of silence. We washed all clothes that were smelly and threw them into the drier then bought some postcards for those at home. Dinner was superb - mussels and Chicken Mornay. The two Scotswomen who we met at Holly were also at Mountain House for dinner. Graeme the barman (ex-Post Office) joined us for lots of laughs and a bloody good night. Not true tramping but heaps of fun. Finally, Graeme headed off to his bach and the two women to their tent while we enjoyed clean white sheets and feather duvets. I had budgeted seventy dollars for our night at the Mountain House and I knew that it was blown when the cork came out of the first bottle of wine.

| | | |
|-----------------|-----------------|---|
| Location: | P20 069104 | Stratford Mountain House |
| The Radio Hour: | Mountain Radio: | Cancelled because we were kicking up our heels. |
| Weather: | Not recorded | |
| Track Times: | 0720 - 1320 | Holly Hut - Stratford Mountain House |

Total track times for this section = 26 hours 15 minutes

Sections Three to Five of this tramping trip will follow in future issues of Pohokura.

HTC BIKE TRIPS



Aorangi Circuit

Wed 28 May

The day was fine and clear but, oh dear, the frost. We assembled at the Maraekakaho War Memorial all wrapped up for winter. Two routes were on offer: our usual - Aorangi Road, covering about 32km and a newer route, 26km to the end of Mangatahi Road. Although the sun made an appearance, its warmth was quite "milky" but there was no wind.....so biking conditions were quite pleasant. Everyone returned safely (no punctures) to the War Memorial where we had lunch.

Cyclists: Heather Stephenson, Judy Dobson, Pat Hill, Rodger Burn, Jim Hewes, Penny Isherwood, Christine Hardie, Margaret Eriksen, Bobby Couchman, Ian Stewart, Christine and Bruce Turner, Garry Smith, Marion Nicholson, Graham Hare, Richard Waterer, Anne Cantrick, Graeme and Tracy May, Judy McBride, Brent Hickey, Alasdair Shaw, Joan Ruffell

Tutaekuri – Sacred Hill

Wed 25 June

Fifteen cyclists left Fernhill House grounds in mild overcast conditions with a moderate northerly wind, the destination 20kms away at Dartmoor. The ride took in Fernhill, Swamp Road, Puketapu, and Dartmoor Road which runs alongside the Tutaekuri River. The Dartmoor Valley is very attractive with its orchards and vineyards, and the Tutaekuri River is more visible at this time of the year with the leaves off the trees. The ride up the valley is slightly uphill which requires a little bit of grunt.

Morning tea was had in an attractive reserve at Dartmoor. Half a dozen more hardy types took on the hill which runs up past the Sacred Hill winery - after they had finished their biscuits and cheese! With a breeze at our backs it was plain sailing back to Fernhill and lunch.

AS

Cyclists: Peggy Gulliver, Judy McBride, Dennis Beets, Rodger Burn, Penny Isherwood, Joan Ruffell, Richard Waterer, Ray Manning, Garry Smith, Christine and Bruce Turner, Marion Nicholson, Graeme Hare, Pam Pike, Alasdair Shaw

Along Some Local Pathways

Wed 5 February

Fifteen met at Pakowhai Park and cycled along the stop bank to Fernhill; being high up and behind Twyford gives you another dimension of how much land there is. We turned down Highway 50 then Ngatarawa Road to the Hastings Golf Club for a lovely morning tea. When we were about to leave Rodger found he had another puncture in his back tyre - the second of the morning. Jim helped him and I caught up with the rest who were waiting at the Chatham Road corner. Rodger and Jim arrived and we all carried on to Raupare Road going through Twyford to get back on to the stop bank and back to Pakowhai Park where we had lunch. It was a good ride on a lovely HB day and not too far for everyone to travel for the start.

Cyclists: Heather Stephenson, Judy McBride, Bobby Couchman, Rodger Burn, Raewyn Ricketts, Alan Berry, Pam Pike, Jim Hewes, Graeme Hare, Peggy Gulliver, Graeme May, Garry Smith, Marjorie Musson, Margaret Graham, Marion Nicholson (organiser)

Otane - Boundary Road Circuit

Wed 19 February

Alasdair was leading the real cyclists while Rodger was taking the B party for a more leisurely outing.

B Party: another typical summer CHB day as 10 of us left the A party at McCauley's Café in Otane and headed down Racecourse Road towards the Tukituki River, enjoying the lack of traffic plus the scenery. Only one decent hill before dropping down to the Patangata Pub where we had smoko on the grass verge outside. Showing a bit of willpower, we then carried on down River Road to Tamumu where we regrouped and the lads made some adjustments to Bobby's brakes before returning via Tod Road to Otane. We then indulged ourselves on the café snacks before returning home. It was the first time out for Tracy who enjoyed the 33 km ride.

RB

Alasdair's party [AS, JR, BH, CH, GH, SC] had a good slog along the College Road – Te Onepu Road loop that we normally do as part of his East Argyll ride. Then it was the great swoop down to SH2 which we crossed to go along a farm road or two. First it was a limestone surface and, after a weary plod to the top, it was across paddocks. The farmer friend of Alasdair's had left gates open for us and we negotiated a couple of steep descents before coming out on the other side of the farm on to Te Aute Trust Road. We turned south and east to complete the long haul back to Otane. The heat made it a bit of a challenge so we indulged ourselves with a few stops along the way!

Cyclists: Marion Nicholson, Heather Stephenson, Tracy May, Bobby Couchman, Penny Isherwood, Marjorie Musson, Garry Smith, Ian Stewart, Dennis Beets, Rodger Burn
Alasdair Shaw, Joan Ruffell, Brent Hickey, Christine Hardie, Graeme Hare, Scott Campbell

Tukituki Circuit

Wed 19 March

Another sunny day and a large gathering met at Summerset retirement village. Our group initially split into two parties with equal numbers electing to go either to the Clifton Cafe via the cycle paths or the more hilly Tukituki Valley Road route. The pathways group caught up with Christine H who had cruised in from somewhere near Clive after an outing to the airport for passenger drop-offs and they all arrived expectantly at the cafe a while before the valley group. Mr Lyn was with the pathway ladies because he had not read the instructions about choice of route. The cyclists from the valley ride soon joined the café crowd for a well-earned smoko and our usual chatter. After a relaxing rest most followed the scenic coastal pathway to Black Bridge and then made their various ways to Havelock North or directly home.

RB

Cyclists: Anne Cantrick, Judy McBride, Joan Ruffell, Marion Nicholson, Raewyn Ricketts, Bobby Couchman, Pam Pike, Heather Stephenson, Lyn and Lyn Gentry, Bruce and Christine Turner, Alasdair Shaw, Jim Hewes, Dick Waterer, Ian Stewart, Graeme Hare, Rodger Burn, Christine Hardie

Havelock North to Hastings

Wed 2 April

Eleven cyclists met at Pakowhai Park and set off to Havelock North. We met another seven Havelock members at the corner of Crosses and Napier Roads which made our group total 18 - a very good turn-out on a lovely calm day; ideal for biking. Rodger led us over the hills of Havelock North and on to Birdwood Cafe for morning tea. Such a large group was totally unexpected by them but it is such a nice place to stop, and coffee and cake was quickly served up. We then headed to Flaxmere via the back roads of Hastings and the comment was made that it was great to ride over country roads that some people had never been on.

At the end of Tollemache Road the faster riders [LG, DW, CH, IS, DB, RM] took a longer route, much of it into a head wind, to the Longlands roundabout, along Maraekakaho Road and down Stock Road to Flaxmere before heading back to Pakowhai Park via Oak Road and the stop-banks. The other ten of us biked along Wilson Road and Oak Ave onto the stop-bank of the Ngaruroro River which led back to the park. On arriving back, the faster riders caught us up and we all sat down to enjoy lunch. The Havelock cyclists then headed back to complete their circuit; altogether a very easy 37 kms in great company. What more could a cyclist want?

PG

Cyclists: Ian Stewart, Pam Pike, Penny Isherwood, Mr and Mrs Lyn Gentry, Judy McBride, Rodger Burn, Christine and Bruce Turner, Alasdair Shaw, Marion Nicholson, Ray Manning, Pauline Mahoney, Dennis Beets, Richard Waterer, Garry Smith, Christine Hardie, Peggy Gulliver [organiser]

Seafield Road and Beyond

Wed 30 April

Last year's attempt to complete this circuit was subverted by bad weather so this time the keen band of cyclists was determined to complete the route. Conditions were very good for cycling: dry with good visibility and a cooling breeze. Nevertheless everyone was aware that a fair bit of push to the pedals would be needed to get up all the hills.....

A small group decided to give the hills a miss so went off on the cycleway around the estuary. They later reported lots of bird-watching along the way and had a good look at all parts of the lagoon as they cycled past. From Park Island the larger group tackled the first hill through the Wharerangi Cemetery without incident then it was further upwards to Puketitiri Road. Fortunately, traffic was light and forward progress was good. We made it up the big hill beyond Baylis Bros depot and turned into Seafield Road. Normally we stop at the pine thicket just past the junction for morning tea and today's ride was no exception. The only difference this time was the smaller number of trees – whoever owns this patch has been very busy with chainsaws and several large pine trees have recently been felled. Always sad to see trees down but it left some stumps for us to sit on.

The rest of Seafield Road was covered reasonably easily. Not everyone made it up all the hills en bicyclette but a little bit of 'foot and push' can be helpful at times. Before we knew it, we were at Bay View. The circuit had taken less than two hours by this stage. From there it was a short stretch on flat roads and new cycleway to our favourite caff at Snapper Park. Some of us indulged ourselves with a coffee and accompanying goodies, others took their packed lunches to sit on the beach and enjoy the glorious view over to Bluff Hill. The cycle path group rang shortly afterwards and was astounded to find the hill climbers had already arrived. Pretty soon they popped in and we were ready to pedal our way back to the cars. CH

Cyclists: Christine Hardie (organiser), Rodger Burn, Heather Stephenson, Penny Isherwood, Ray Manning, Marion Nicholson, Judy McBride, Lyn and Lyn Gentry, Joan Ruffell, Scott Campbell, Graeme May, Bobby Couchman, Maureen Broad, Pauline Mahoney, Christine & Bruce Turner, Dick Waterer, Graeme Hare

Pakowhai – Puketapu

Wed 06 August

It was good to get out on our bikes after several weeks of cancellations; in their eagerness several riders had even cycled from far lands to the gathering point at Pakowhai Park. It was mild and dry but poor weather was forecast for the middle of the day so we were on a mission to get the ride done before the rains came down. First it was south and west along the cycle paths to Fernhill. After the tree-covered park with many dog-walkers, it was on to the bare tops of the stopbanks where it was immediately obvious that the most numerous users of this trail are our bovine friends who had left copious evidence of their digestive systems covering the ground. Some serious bicycle washing would be in order once we all got home.

There was a slight head wind but not enough to slow anyone down. An interesting interlude was provided near Fernhill Bridge where we stopped to regroup. Mr Lyn had had an unusual encounter between his tongue and his dental plate which had somehow become wedged in the very back of his mouth. Fortunately Mr Hare was at hand and he bravely put his fingers [perhaps even his entire hand!] into Lyn's mouth to right the wrong. Such bravery and resourcefulness surely deserves a medal! Or at least a chocolate fish, Lyn.

Along Swamp Road to Puketapu Pub for elevenses where Rodger [who started from Clive] and Garry [via Taradale] were waiting. But we were too fast and too early and Puketapu township was treated to the sight of 16 HTC members hanging around the hostelry waiting for opening time!! However, once mine host appeared and let us in we were quickly served with refreshments. The sky turned threatening over the next hour so it was back on our bikes and along the cycle path on the Oamaru side to Pettigrew Green with the wind now behind us. Now, that's the way to travel. Some of the Taradale people branched off home at this stage but the rest of us carried on through Brookfields where we left the trail and took to the road. The last challenge was Chesterhope Bridge then a sharp left turn underneath and back to the park to beat the rain. It was about 35km for most of us but the heroes like Judy, Graeme and Anne clocked up more. CH

Cyclists: Rodger Burn, Christine Hardie, Judy McBride, Scott Campbell, Penny Isherwood, Margaret Eriksen, Tina Duley, Ian Stewart, Dennis Beets, My Lyn Gentry, Pauline Mahoney, Garry Smith, Anne Cantrick, Graeme Hare, Maureen Broad, Heather Stephenson

CLUB NEWS

Annual General Meeting

The AGM of Heretaunga Tramping Club will be held at the Harriers' Clubrooms, Sylvan Road, Hastings on Wednesday, 12th November after the regular meeting. Nominations are needed for all positions.

HAZMOBILE COLLECTION 8 – 9 November 2014

Helpers required for Hastings site on the Saturday and Napier on the Sunday. Please assist us as this is our major fundraiser for the year. Give your names to Graeme Hare. Phone 8448656 or email grhmare@xtra.co.nz

EASTLAND TRIP 2015

Lex Smith is keen on organising a trip in the Eastland area early next year. Please contact Lex, Phone 8774087 or email smithers@xtra.co.nz

Material for Creating Primus Wind Shields

You can purchase sheets of aluminium (size 890mm x 585mm x 0.27mm thick, cost \$2.50 per sheet) from Beacon Print – 208 Wilson Road, Hastings; Off Omaha Road on the left-hand side. Beacon Print prints the 'HB Today' newspaper and the sheets of aluminium have been used in the printing process. They are shiny on one side and a grey colour with printing text/photos on the other. They provide it as a flat sheet and you can easily cut out a rectangular piece for a shield with scissors. Trim the spikey corners round for safety and form the curved cylinder shape around a rolling pin. This thickness is just a bit thicker than two sheets of this magazine paper. Add a couple of holes along the bottom edge for old bike spokes or tent pins to pin the shield down for better wind stability.

Using a Primus Windshield saves you primus fuel, your boiling time is shorter and it can prevent spilling your precious food or hot water. These wind shields can be rolled up within a closed-cell sleeping mat or cut to fit within your billy. Another use for this sheet aluminium: it can be cut to neatly fit in the bottom of any kitchen drawer (shiny side up); easy surface to clean and cheap to replace.

This material is what has been on Waikamaka Hut bench and how it has survived all these years is amazing.

ITEMS for SALE

The club has a number of useful tramping items for sale at discounted prices.

| | |
|--------------------------------------|---------|
| New Topo 50 Maps: | \$5.00 |
| Large blue survival bags | \$5.00 |
| Smaller white pack liners | \$2.50 |
| Metal HTC club badges | \$8.00 |
| Blue HTC caps | \$17.00 |
| Bushcraft books | \$12.00 |
| Safety in the Mountains | \$5.00 |
| Revised Safety in the Mountains book | \$12.00 |

These can all be ordered from **Marjorie Musson** Ph 878 8279 mussons@xtra.co.nz or **Penny Isherwood** Ph 844 9994 p.isherwood@orcon.net.nz

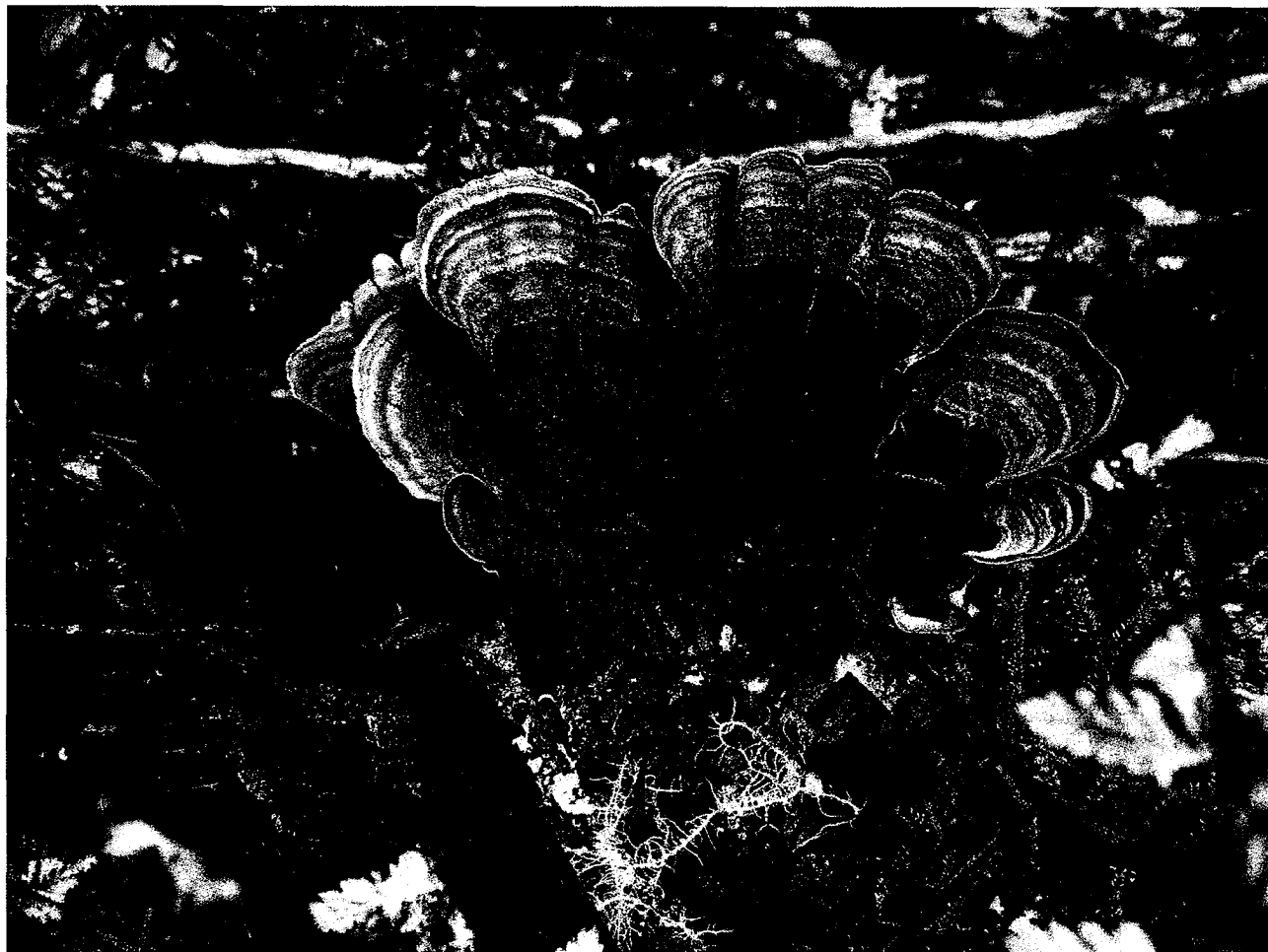
Orders are collated in batches to save on courier charges so you may not get your maps straight away.

Personal Contact Information:

If you change your mailing address, home phone number or e-mail address please inform the Club Editor Phone 845 4913. Otherwise, we could lose contact with you.

PHOTO COMPETITION held on Wed 9 July 2014

Peoples' Choice Category



Overall winner and winner of Native Flora and Fauna: Janice Love

Other Category winners:

Above the Bushline: Glenda Hooper
Below the Bush Line: Alan Berry
Outdoor Landscapes: John Montgomerie
Hut and Camp Life: Janice Love
Club Characters: Glenda Hooper
Historic Photos: Alan Berry

Heretaunga Tramping Club Meeting and Trip Information

Coming Meetings:

| Date | Speaker | Topic | Host | Supper Help |
|----------------|------------------------------|--------------------------------------|----------------------|-----------------------|
| 20 Aug | Glenda and Sue | Quiz Night | Geoff Clibborn | Jim Hewes |
| 03 Sept | Kay Ward | Her Choice | Graeme Hare | Peter Brown |
| 17 Sept | All Members | Poetry Night | Alan Berry | John Montgomerie |
| 01 Oct | Mike Lusk | Do You Know Your Flora and Fauna? | Randall Goldfinch | Fred Chesterman |
| 15 Oct | Lowe Corp Rescue H/copter | Visit the Hangar | Liz Pindar | Heather Stephenson |
| 29 Oct | All Members | Open Night | Mary Gray | Scott Campbell |
| 12 Nov | All Members | Annual General Meeting | Pam Turner | Rodger Burn |
| 26 Nov | All Members | Games Evening | Roy Frost | Graham May |
| 10 Dec | All Members | Last Supper Bring A Plate | Janice Love | Maureen Broad |
| 07 Jan 2015 | All Members | Holiday Trips | Ken Nugent | Paul Whateley |
| 21 Jan | Graeme Hare | Pecha Kucha | Judy McBride | Garry Smith |
| | | | | |

Meetings Sub-Committee: Lex Smith, Penny Isherwood, Graeme Hare

We want ideas for club night speakers and activities.

Supper:

Put out cups, wash dishes, leave kitchen clean and tidy, and generally help Joan Ruffell.
Sweep floors and check that heaters and lights are off at the end of the meeting.

ARE YOU FIT ENOUGH TO TRAMP?

Even the easiest of club trips requires a reasonable degree of fitness and, from time to time, tramps have been seriously delayed by unfit party members. While individuals may have varying degrees of basic fitness it is unlikely that a person who has a sedentary job or who plays no sport will manage an average B Party trip. The best preparation for tramping is tramping and there are hilly places in Napier and close to Hastings which make excellent training areas. For example, a walk from the cattle-stop car park in Te Mata Park to the top of the peak via the big redwoods and back to the cattle-stop via the roadside track with an eight kilogram pack should take about 70 - 80 minutes. Further, this pace should be able to be maintained for five to six hours.

TRIP GRADINGS

EASY: 4-6 hours tramping - suitable for beginners.
MEDIUM: 6-8 hours tramping - suitable for those with some experience.
HARD: 7 hours + tramping - experience and a high level of fitness necessary.
Unless otherwise specified an 'A' trip would have a **HARD** grading and a 'B' trip a **MEDIUM** grading.

| GEAR LIST FOR DAY and WEEKEND TRAMPS | | |
|--------------------------------------|--|--|
| DAY TRIPS | | WEEKEND TRIPS |
| <u>Wear/Carry</u> | <u>Carry</u> | <u>Carry:</u> all items listed for day trip plus |
| Pack and pack liner | Map and compass | Sleeping bag |
| Boots and gaiters | High energy snacks | Sleeping mat |
| Socks | At least a litre of water | Food for three additional meals |
| Parka and over-trou | Lunch | Cooker, billy and matches or lighter |
| Fast-drying shorts | First aid kit | Extra snacks |
| Fleece or woollen jumper | Torch, spare batteries and bulb | Toilet gear, small towel and toilet paper |
| Long-johns & singlet | Sunscreen | Additional warm clothes |
| Sunhat & warm hat | Emergency food | Plate, mug, cutlery |
| Gloves/mittens | Survival kit (whistle, cord, matches, pencil, paper) | Tent/fly if required |
| Over-mitts | | |
| Whistle | Complete set of spare warm clothing | |

Leave at truck/car: Complete set of clothing for the return trip and a mug with tea / coffee / sugar or whatever to have a hot drink from the Clibbornette.

OVERDUE TRAMPERS

Although returning parties plan to be out of the bush before dark, safety considerations must come first. This may mean that parties are late returning to transport and, even after arriving back at the transport, it may take two hours or more to return home. Beginners should make sure that anyone who might worry about them is informed of this. Leaders will try to get a message through to one of the 'overdue contacts' if return seems likely to be later than 10.00 pm. All newcomers should ensure that their own emergency numbers are noted in the party list that the leader leaves in town. For all enquiries about overdue trampers please ring one of the following:

Susan Lopdell 844 6697

Graeme Hare 844 8656

Glenda Hooper 877 4183

Cancellations: If you cannot make a trip please contact the leader BEFOREHAND so as to avoid unnecessary delays for the rest of the party.

TRIP LIST 2014

Although the area for the trip is generally adhered to, the suggested objectives may change for a number of reasons. For pre-trip enquiries contact the organiser or Susan Lopdell Ph 844 6697. Please email trip requests to susansplace@xtra.co.nz



13 August Wed Tramp With Rodger

An outing in the local ranges.

Organiser: Rodger Burn: Ph 877 6322.

20 August Wed Cycle in Central HB

From Waipawa to Onga Onga and return.

Organiser: Jim Hewes Ph 877 6784.

23 - 24 August Maropea Forks Hut \$15 Map: BK36

A chance to visit the new Maropea Hut via Sunrise Hut, Top Maropea Hut and down to Maropea Forks Hut. Return the same way on Sunday.

Organisers: Randall Goldfinch Ph 845 4913

27 August Wed Blowhard Bush

Tramp and inspect the bush restoration work done here.

Organiser: Bobby Couchman Ph 877 8557

3 September Wed Cycle Fernhill to Sacred Hill

A flat route leading to the Dartmoor area.

Organiser: Judy McBride Ph 876 9756

7 September Hoodoo Saddle \$15 Map: BJ37

Up the Taihape Road to Boyds Bush area.

Organiser: Graeme Hare Ph 844 8656

10 September Wed MacIntosh Hut

Down the hill, over the bridge and up up up the other side.

Organiser: Janice Love Ph 877 5442

17 September Wed Cycle in the Crownthorpe Area

Go along Matapiro Road from Pukehamoamo School to Crownthorpe Church; return the same way.

Organiser: Rodger Burn Ph 877 6322

20 - 21 Sept Makino and Te Puia Huts \$15 Maps: BJ37, BH37

From the saddle on Makahu Road and up the ridge to Makino Hut for the night. Sunday down to the springs for a hot swim, lunch at Te Puia Hut and walk along the riverside to the truck.

Organisers: Janice Love Ph 877 5442 Glenda Hooper Ph 8774183

24 September Wed Beach Walk

Maybe Tangoio, maybe somewhere further south, depending on the tides.

Organiser: Keith Thomson: Ph 877 5391.

1 October Wed Cycle the Tour of the Bays

Complete the circuit from Hastings Golf Club.

Organiser: Jim Hewes Ph 877 6784

4 - 5 Oct Kiwi Saddle Hut \$15 Map: BJ37

An opportunity for club members to visit our newly renovated club hut; day or weekend options.

Organiser: Anne Cantrick Ph 844 8149

8 October Wed Black Birch Range

Another visit to the Clover Patch in Kaweka FP.

Organiser: Penny Isherwood Ph 844 9994.

15 October Wed Cycle in Central HB

An outing with our CHB hosts.

Organiser: Christine Turner: Ph 06 857 5227.

19 Oct Lizard – Cattle Hill \$15 Map: BJ37

From the Napier - Taihape road climb on to the Lizard, drop down to Omahaki Stream, across to Cattle Hill.

Organiser: Peter Berry Ph 877 4183

22 October Wed Sunrise Hut, Ruahine FP

Map: BK36

Organiser: Garry Smith Ph 844 9931

24 - 27 Oct Labour Weekend Ruahine FP \$15 Map: BL36

A Party: Renfrew Road -Rangiwahia Hut - Triangle Hut - Irongate Hut; ascend main Ruahine Range to old Toka Bivy site - Leon Kinvig Hut - Makaretu Hut and out to Ngamoko Road-end.

B Party: day trips. FRI - Rangiwahia Hut via Deadmans Loop or main route; SAT - Heritage Lodge area; SUN - Shortts - Knights circuit; MON - Apiti Track and maybe meet up with other party.

Organiser: Susan Lopdell Ph 844 6697

29 October Wed Cycle Pakowhai Park to Dolbel Reserve

On pathways and return the same way.

Organiser: Alasdair Shaw Ph 877 6225

02 Nov Cairn Trip \$15 Map: BJ37

Come and join the President on the club's annual pilgrimage to the cairn atop the Kaweka Range.

Organiser: Christine Hardie Ph 844 9590

5 November Wed Bellbird Bush to Spooners Hill

Organiser: Raewyn Ricketts Ph 877 7223

8 - 9 Nov HAZMOBILE COLLECTION

This is our club's major fundraiser for the year as we assist the local councils. Helpers wanted in Hastings on the Saturday and in Napier on the Sunday

Organisers: Graeme Hare Ph 844 8656

12 November Wed Cycle Scott's Choice

Maybe on the local pathways.

Organiser: Scott Campbell Ph 879 8554

15 - 16 Nov **Waikamaka Hut** **\$15** **Map: BK36**
 Visit another of our club huts. Options are either to stay and finish the painting at Waikamaka or continue on to stay at Waterfall Hut.
Organisers: Randall Goldfinch Ph 845 4913

19 November Wed **Parks Peak Area – Ruahine FP**
Organiser: Christine Hardie Ph 844 9590

26 November Wed **Cycle Heather's Choice**
Organiser: Heather Stephenson Ph 843 9157

30 Nov **Stoney Creek** **\$15** **Map: BH38**
 From Napier-Taupo highway turn off on to Takarere Road and wander up this interesting stream. Options to return to truck via ridge track.
Organisers: Glenda Hooper Ph 877 4183

3 December Wed **Kaweka Flats** **\$15** **Map: BJ37**
Organiser: Graeme Hare Ph 844 8656

10 December Wed **Cycle the Tuki Tuki Circuit**
 For the regulars with a stop at Bob and Heather Carter's for morning tea.
Organiser: Rodger Burn Ph 877 6322

13 - 14 Dec **Maungatanwhia (tbc)**
 Will be confirmed once Mike contacts Pete Shaw, Manager.
Organisers: Mike Lusk Ph 877 8328

17 December Wed **Kotare Farm**
 Back to Maraetotora Valley.
Organiser: Marion Nicholson Ph 873 5935

31 December Wed **Sunset in Napier**
 Somewhere along the coast.....
Organiser: Christine Hardie Ph 844 9590

4 Jan 2015 **Ohara Stream** **\$15**
 Drive up to the Kereru area for a hot summer's day wander along this picturesque stream.
Organisers: Social Committee

7 Jan Wed **Cycle Waipawa to Onga Onga**
 There and back on mostly flat, sealed roads.
Organiser: Jim Hewes Ph 877 6784

11 Jan **Kaweka Foothills** **\$15** **Map: BJ37**
 Come and join Graeme the Explorer on one of his rambles in the bush off Whittle's Road.
Organiser: Graeme Hare Ph 844 8656

14 Jan Wed **Cycle Park Island to Bay View**
 More than one possible route to get there.
Organiser: Nominations needed

17 - 18 Jan **Barlow's Hut, Ruahine FP** **\$15** **Maps: BK37, BK36**
Meet at Pernel Orchard at midday and walk into Barlow Hut for the night. On Sunday tramp across to join the Parks Peak/Yeomans Track then back to the truck.
Organiser: Susan Lopdell Ph 844 6697

21 Jan Wed **Cycle Pakowai to Dartmoor**
Along the cycle paths and picnic at the park.
Organiser: Penny Isherwood Ph 844 9994

25 Jan **Beach Trip**
Somewhere along the HB coast [tbc according to tides].
Organiser: Volunteer required

28 January Wed **Cycle Maraetotora Valley**
Take the high road or the low road to Mohi Bush.
Organiser: Marion Nicholson Ph 873 5935

6 Feb Friday - 8 Feb Sunday **WAITANGI WEEKEND 2015.**
WE have the following suggestions put forward re; next year's Waitangi 3 day weekend.
Option1; Whirinaki Forest Park.
Option2; Kaimanawa Forest Park.
Option3; Tongariro National Park (Staying in a Lodge ?).

Please think about your preference before the December Pohokura 2014 is printed



Waingongoro Hut – Egmont National Park
Long Walk Home Trip – Selwyn Hawthorne & Mike Bull (Refer back to Page 16)