

**HERETAUNGA TRAMPING CLUB P O BOX 14086 MAYFAIR
HASTINGS 4159**

POHOKURA – Bulletin No 244

September 2013

HTC Committee:

Club Patron:	Jim Glass	877 8748	james@martinglass.co.nz
President:	Christine Hardie	844 9590	chardie2000@hotmail.com
Vice President:	Graeme Hare	844 8656	grhmhare@xtra.co.nz
Treasurer:	Lex Smith	877 4087	smithers@xtra.co.nz
Club Captain:	Susan Lopdell	844 6697	susansplace@xtra.co.nz
Asst Club Captain:	John Montgomerie	877 7358	j.montgomerie@paradise.net.nz
Editor:	Randall Goldfinch	845 4913	randall.g@xtra.co.nz
Committee:	Brenda Thomas	027 628 5979	brendakthomas@hotmail.com
	Penny Isherwood	844 9994	p.isherwood@orcon.net.nz
	Geoff Clibborn	844 6039	geoff.evelyn@xtra.co.nz
	Marjorie Musson	878 8279	mussons@xtra.co.nz
	David Blake	835 3284	dblake@ihug.co.nz
	Glenda Hooper	877 4183	hooperberry@orcon.net.nz

Truck:	<u>Geoff Clibborn</u> , Lex Smith
Fixtures:	<u>Susan Lopdell</u> , John Montgomerie, Graeme Hare, Brenda Thomas, Glenda Hooper, Rodger Burn (Mid-Week Group)
Huts:	<u>Mike Lusk</u> , Brenda Thomas, Susan Lopdell
Training:	<u>John Montgomerie</u> , Susan Lopdell, David Blake, Mike Bull
Environment:	<u>Mike Lusk</u> , Penny Isherwood, Raewyn Ricketts
SAR:	<u>John Montgomerie</u> , Gerald Blackburn, Graham Thorp
Meetings:	<u>Christine Hardie</u> , Penny Isherwood, Graeme Hare
Social:	<u>Glenda Hooper</u> , Raewyn Ricketts, Joan Ruffell
Sales Rep:	Marjorie Musson, Penny Isherwood
Scrap Book:	Marjorie Musson
Photo Library	Lex Smith, Glenda Hooper
Library:	Liz Pindar
Editor's Assistant:	Christine Hardie
Supper:	<u>Raewyn Ricketts</u> , Alan Berry
Membership Records:	Glenda Hooper
Web Editor:	Glenda Hooper, Brenda Thomas

Club Meetings: These are held every second Wednesday (before a tramp) at the Hastings Harrier Clubrooms in Sylvan Road, Hastings. Doors open 7:30pm; visitors are most welcome. 50c donation gratefully accepted each meeting towards hall hire (*place in the old boot*).

Website: www.htc.org.nz

Mail: P.O. Box 14086, Mayfair, Hastings 4159

Enquiries: Glenda Hooper 877 4183 Graeme Hare 844 8656 Susan Lopdell 844 6697

Club Cell-phone (held in the truck) 027 438 6474

September 2013

Presidential Offerings

Everyone knows that this edition of *Pohokura* is slightly later than usual because of the Editor's visit to the other side of the world. We are grateful to Randall for descending out of the clouds and going straight to work on the magazine so no-one has been seriously inconvenienced. He is not the only club member to have ventured overseas lately; many of you have been investigating the castles, canals, hills and bike trails of primarily Britain and Europe but also Australia and South America. Thanks all of you who have shared your adventures with us at club meetings. And it's great to see you all coming back to enjoy the delights of our own backyard.

However, changes in our backyard are continuing. As I have pointed out in previous columns, the administration of public lands is being shaken up and this is important to us as users of these areas. The August issue of the FMC Bulletin reports on some of the latest trends and is alarmed at the implications. DoC has been gutted yet again and the department is becoming increasingly marginalised under the present government. Economic outputs reign supreme and it appears that some of the basic, legal foundations of some parks are being bypassed although it was good to see the Minister vetoing the Fiordland highway proposal – here's hoping he does the same with the monorail. It is now publicly admitted that there is not enough funding for important conservation work to be maintained in some areas and the demand for volunteer and/or corporate activity is increasing. Where does that leave us? Trampers' interests are heavily entwined with the conservation estate and our activities could be diminished if the present trends continue. At HTC we are all interested in the welfare of our tramping environment – many of you are already involved with various projects in Hawke's Bay and I hope that this will continue. At the same time, I think we need to encourage FMC to continue the pressure to maintain public input into the management of public land.

On a club level it's amazing to realise that another year is sliding away fast. Winter tramping with all its challenges is nearly behind us although there is a late show of snow on the tops of the local ranges as I write. Who knows if the spring will bring more? At ground level, as usual, committee members and other helpers have continued to carry out their duties which contribute to the uninterrupted running of the club. Keep up the good work, folk.

Christine Hardie

TRIP REPORTS

#2228

Fred Chesterman's Farm - Maraetotara

Wed 8 May 2013

After a delay in starting the truck we arrived on Fred's farm at the sale shed in time for morning tea on this lovely sunny Hawke's Bay day.

Fred then led us over the lush green pastures and through the huge boulders/rocks to a high point overlooking Waimarama to the east, Cape Turnagain to the south and Napier to the north. He pointed out various aspects of how the drought had affected farms in the area. Then up and down we walked back to the sale shed for lunch, soaking up this lovely area.

But, YES, there was more – Fred led us in another direction. He showed us his placid bulls which were for sale if anyone had a spare \$20,000 in their pockets (an offer not taken up although plenty of photographs were taken) with the magnificent horned billy goat "peace maker" amongst them. Fred explained the reason for this – it enhanced placid bulls! Passing a paddock of chow, he explained how useful this crop was during the drought but careful management was required to avoid losing stock. Continuing on, we arrived at another high point where we could see Hastings plus an excellent view of the Tukituki/Maraetotara Valley. Fred explained further points of interest and how far his farms extended, promising another trip there one day. Heading homeward we were careful not to follow the get-a-way couple (Graeme & Alasdair) who were

picking mushrooms and going the wrong way. We all arrived back at the sale shed, having had a lovely day out catching up with each other, learning more about farming and enjoying the beautiful weather that Hawke's Bay provides. And, YES, the truck did start after a short roll down the hill for the homeward journey.

Party: Marion Nicholson [leader] Farmer Fred Chesterman, Alan Berry, Alasdair Shaw, Barbara Phillips, Brent Hickey, Bruce and Christine Turner, Catherine Wakefield, Geoff Clibborn [driver], Graeme Hare, Christine Hardie, Heather Stephenson, Janice Love, Judy Dobson, Marjorie Musson, Murray Aitken, Pauline Mahoney, Penny Isherwood, Philip Mardon, Raewyn Ricketts, Rodger Burn, Susan Taylor

#2229	HTC & WTC Invitation Weekend	18 - 19 May 2013
--------------	---	-------------------------

Numbers from HTC were quality rather than quantity as only seven signed up. Randall took his car as he had a good load of firewood for the weekend and was offering to be *camp commandant*. Geoff Robinson took his bus up on the Friday night and camped at the old camp ground so only five and my barbeque travelled up in the truck! I had taken the barbie to the truck the previous day as it was better getting it into the truck in daylight on the Friday rather than in the dark on Saturday morning!

I think we arrived at 7.45am and had time to empty the truck, set up the barbie etc before the Wanganuians turned up at 8.30. They also went up to Robson Lodge to leave their food there. We left it all in the good hands of Randall with Geoff to get the kitchen wood range fired up and the hot water going.

The Wanganui contingent was also small at five persons and, with only five walkers from HTC, it made a good-sized group. We were all delivered by Peter Berry to the Lakes Road car-park to begin the Mackintosh Circuit with a visit to the old Kaweka Hut site. Then on to Mackintosh, stopping at Kaiarahi Creek for lunch just as the rain started - just enough to be a nuisance! Views to the tops were intermittent but at least our visitors were able to get some appreciation of the country around them. A short stop only at Mackintosh Hut was made as we needed to keep moving to get back to Robson Lodge by about 4p.m. and get set up for the feast. While trooping across the plateau to the edge, there were some oohs and aaahs when the drop into and out of the Tutaekuri Gorge was seen!

We were fortunately met by the truck at the old Mackintosh carpark which saved the foot slog back to the Lakes Road carpark and so returned to the lodge for the evening's festivities. I had taken my inverter and hooked it up to the battery to run a couple of light bulbs in the kitchen plus one in the lounge - quite a mission getting all the cords in and through a junction box and RCD. There were very few places to keep the cords out of the way but it all worked. As well, we had a couple of gel cells with small wattage 12v bulbs clipped on - even had one in the loo! The Wanganui crew had brought mostly raw veges to cook with just enough pots to accomplish this and lots of volunteers to prepare the veges. As it was raining I set up the barbie in the laundry room out the back. Time was getting on so we had to turn everything to HIGH as we had steak and non-pre-cooked sausages - this created some smoke and vapours that, in the small room, caused a cloud which gradually settled down from the ceiling to below head height. Anne and I had to duck down to get fresh air and continue rather than be asphyxiated! Was just like what happens in a real house fire: clean air at the bottom. The tables/trestles set up in the lounge were bulging with the feast by about 6.30 and, even with all-round encouragement, we could not deal to it all - never mind, some leftovers for breakfast! As most seemed tired and ready for sleep, we retired by 10pm.

Away at 7.45a.m. on Sunday to get today's trip done and then get the Wanganui folk away by mid-afternoon, leaving Randall and Geoff to kindly tidy and pack up. They got away late morning, leaving the gear for us to pick up after the day's trip. Five more HTC's arrived for the day only so it was all in the truck and a driver to get the Wanganui van to Timahanga Station. Up through the deer farm to start the day. First we followed the old logging skid-track across the plateau and up the spur to Tahuhunui Ridge then to the Hogget high point, although it is not a defined high point - almost hard to identify! Sights were able to be seen in all directions with Fred, especially, taking it all in: Ngamatea Station spreading a verdant green compared with the tussock hills towards the headwaters of the Taruarau Valley; over towards Otupae Station and south with Aorangi being prominent and, of course, Timahanga Station down towards the lower Taruarau Valley. Fred had been at school with Jack Roberts and keeps in regular contact with him. Lunch was consumed (in a timely manner in order to keep to the clock) in a sheltered area below the Hogget as it was quite breezy with the look of a change in the weather coming in from the north-west. Retracing our route back down to the entry point onto the ridge, we found Marion and Anne from Whanganui who had waited there. As the day was vanishing and the weather looking dodgy, we decided to go back the same way

as it would be quicker and in the interests of the Wanganui team to get home without being unduly late. I think we arrived back at the truck by about 3.30 and saw the Wanganui team away along the Taihape Road by Jack's house about 4p.m. It was a quick farewell as the rain was steady by now.

Back to Robson Lodge to get the gear left there, then returning to Pernel just after dark and in heavy rain. The grabbing of gear was done in quick movements, dampening the spirits! Many thanks to Peter Berry for driving, Randall especially and Geoff for their housekeeping at Robson's. The numbers were just right really as the bunk numbers were not exceeded and there was more chance to get to know our guests. A pleasant weekend with the Wanganui people able to see an area they were not familiar with. JM

The thank-you note below was sent to me to by David Scoullar to be included in this report.

"On behalf of the Wanganui Tramping Club, I would like to thank Heretaunga for a splendid weekend in May. We thoroughly enjoyed staying at Robson's Lodge and exploring the area. Your warm hospitality was appreciated and the food was splendid. We now look forward to hosting you in the not too distant future, perhaps at our Raurimu hideaway, Possum Lodge. David Scoullar, Wanganui Tramping Club"

Party: David Scoullar, Anne Mills, Helen Atkinson, Ridgway Lythgoe, Diane Weeks [WTC]
John Montgomerie [leader] Penny Isherwood, Anne Cantrick, Randall Goldfinch, Glenda Hooper,
Peter Berry, Geoff Robinson [HTC]
Alasdair Shaw, Joan Ruffell, Fred Chesterman, Marion Nicholson, Mike Lusk [Sunday Trippers]

Boyd's Homestead

On our return from the Hogget Tramp a number of us visited the Owahaoko (Boyd's) homestead.

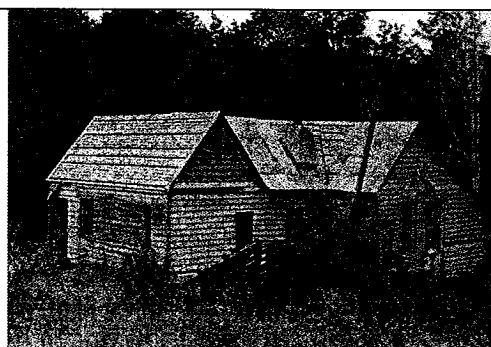
This homestead was built sometime before 1884 by John Studholmes.

The timber used was pit sawn on the job: the framing was rimu, the weatherboards matai and the shingles totara. The nails used in the building were hand-made.

The cob fireplace and chimney were built of packed earth. When the roof started to leak the water got into the chimney and it collapsed.

The house has not been lived in since 1933 and, after years of neglect and misadventure, it is in disrepair. Even so, the timber is still very sound.

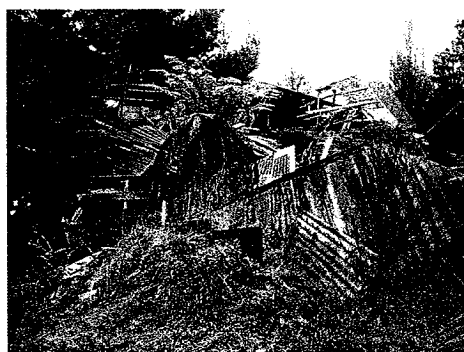
Fred Chesterman



1950: Going



1980: Going



2013: Gone

#2229	Birthday Boys and Girls Bash at Robson Lodge	20 - 21 June 2013
--------------	---	--------------------------

This year we brought forward our celebration just a month to fall in line with the actual birthday dates and what a change in the weather from last year's summer temperatures. The forecast must have put some people off this year.

Once again Randall supplied us with very generous quantity of wood which was complemented by wood from Jim, Pam and Rodger. At all times the lodge was nice and cosy. On Thursday afternoon, which was the best weather of all, Graeme led a small band of trampers up Bonnie Mary while the others shamelessly loafed around the lodge. The evening meal was again something special and Pam's seafood chowder was very welcome. All came back for seconds complemented with cakes, tarts and sausage rolls from Liz and Heather - in fact everyone brought something to share.

Peter and Lyn led the entertainment in the evening with a guitar and ukulele duet covering a whole range of popular songs culminating much later with some opera from Peter which was well received. On the Friday morning Mr Lyn did his usual fry-up of bacon and eggs for the ladies. This time there was plenty left over for the blokes. Looking out, we noticed a slight dusting of snow on the tops but nothing on the roads our side of the Gentle Annie. Once again Graeme led a little group in appalling conditions for some exercise and I think all were glad to get back into the warmth to thaw out over afternoon tea before heading home.

Six of us stayed a second night and did our best to mop up the surplus food and treats. On Saturday morning Lyn and Heather walked up Gentle Annie before we cleaned out the lodge and left a decent pile of timber for the next guests. Thanks to all for once again making this such an enjoyable event and thanks to Garry for carrying most of the timber and other essentials up in his bus. RB

Party: Mary Gray, Heather Stephenson, Liz Pindar, Pam Turner, Dave Mullinder, Garry Smith, Jim Hewes, Mr Lyn Gentry, Peter Berry, Geoff Clibborn, Graeme Hare, Rodger Burn

#2230	Sunrise Hut – Ruahine FP	Wed 3 July 2013
--------------	---------------------------------	------------------------

This is always a mid -week favourite and we enjoyed a good turnout with a few new faces plus a welcome back to Scott who has now retired and will rejoin us. At the Park entrance we met up with Bruce and Christine and, after the usual messing about, we took off at a leisurely pace up the track. It was apparent that DoC had been doing more work on grading and on the first section we met the crew working on the drainage. They had been bob-catting their way downhill so the upper part of the track was completed.

Nearer the tops we began to feel the bite of the wind which had an icy feel about it - any thoughts of venturing along to Armstrong Saddle were quickly dismissed and we had an enjoyable lunch stop in the hut which gave us a chance to admire the new wood burner and the double glazed windows. Graeme read in the hut book that, in June, 176 people had passed through the hut. Most of them were day visitors – although we met no-one else today - but it justifies the work done on the track as probably the highest use route in the Ruahines. We then made our way back in groups, some via the Swamp Track, to the truck for afternoon tea before the drive home. Thanks to Christine for driving. RB

Party: Christine Hardie, Janice Love, Margaret Graham, Maureen Broad, Sue Myles, Pauline and Brien Mahoney, Bruce and Christine Turner, Garry Smith, Graeme Hare, Andrew Hare, Scott Campbell, Ray Manning, Graeme Hay, Philip Mardon, Alasdair Shaw, Rodger Burn

#2231

Boundary Stream Mainland Island**Wed 17-Thur 18 July 2013**

Four HTC members went to BSMI on 17/18 July to help with a large project refurbishing bait station lines. These were established about 10 years ago and the main requirement was for us to replace any faded or obscured pink triangles with a little vegetation management on the side. After the traditional OSH briefing and short instruction we set out, each with a volunteer student and, initially, with a DoC staff member to tackle some of the lines on the upper part of the reserve. Most of the triangles did need replacing so progress was really quite slow but by the end of the two days a good number of the tracks in the area were rejuvenated.

I've had several discussions with Alan Lee who manages the reserve and we concluded that, at the present stage of development of the project, there are not tasks that can be done by a large group of people arriving for a day such as we have done on weed control at the Ocean Beach dunes each spring. That's not to suggest that HTC cannot be helpful. What they need up there is trained people who can commit to fairly regular visits, say one or two days every month or two. For example, the traps are checked and re-baited in the first week of each month and a volunteer could take ownership of a line or change lines from time to time. This system works well at Cape Kidnappers although the time of servicing is more flexible there.

I've suggested to Alan that we could have one of his team to a HTC meeting to review the project and to go over the practical details of trap line management, so covering training for any interested people. For most volunteers the first day would be done with an experienced person, and there is a wide variety of terrain so the volunteer would not need to tackle anything felt to be beyond them. Some volunteers might prefer to work in pairs and that would be fine - there is already a couple from Napier who do that. My feeling is that it's a long way to travel for one day's work and I stay for two days at a time, enjoying the excellent accommodation and the company which is always varied and interesting. There is plenty of time to go for a wander before or after the day's work. In time, there is scope to take up a special interest as I have done with lizards and weta.

ML

Party: Brent Hickey, Sue Taylor, Peter Berry, Mike Lusk

Thanks those who made it up to Boundary Stream to help out; it was a great couple of days and it's always more interesting to work on these projects as a group. We really appreciate the efforts you put in.

Thanks again from the Boundary Stream Team.

Alan Lee

Team Leader

#2232

Kiwi Saddle Hut**27 - 28 July 2013**

WOW, my first tramp with Dad. We have been busy organising our packs all morning. Lucky we are leaving Hastings at mid-morning. It is a nice sunny Saturday morning. Dad is driving the truck. As we leave Hastings behind us and drive onto the quiet country roads I am feeling excited. I notice a road sign saying "lights on please". We turn into the Lakes carpark and park the truck. Poor Dad has forgotten something! We put our boots and gaiters on. The weather is all good and we start out walking. As we start the first hill is right there and, as we walk up the hill, I can feel my legs beginning to hurt.

There are six adults and me. The group spreads out; Dad and I are in the middle. We meet the Napier Tramping Club as we near the top of the first hill - Kuripapango. I got my first taste of snow and ice. As we walk along the ridge I am thinking to myself, I hope I don't fall, but I look around and see an amazing view. I asked Dad, "How much further is it?" We continue going up and down until we reach a sign saying, "Kiwi Saddle Hut 30 minutes". "Yay." I find an extra reserve and quicken my pace.

We reach the hut at about 4.30pm and it is a bit cloudy. Peter was already at the hut with the fire going. I take off my wet boots and socks and sit down. The whole group is at the hut by about 5.00pm. At 6.30pm Dad gets a call from Dave Harrington and Wellington to see if he knows who and what is happening with the club EPLB going off. It is some other members of the club who have not managed to get to the hut. Dad

and Peter head out - I am a little bit worried. While they are away I get some yummy coconut rough and set up the sleeping bags. Dad and Peter get back to the hut at about 8.30pm. They heard the helicopter and the others are okay.

Sunday morning and we have apple pie for breakfast then set out at about 9.00 o'clock. Dad receives a text to say the truck has got a flat battery! Remember the sign that said to turn your lights on? Dad had forgotten to turn them off!! The wind is a bit icy as we head out along the tops, otherwise the weather is good. Peter points out the mountains, Ngauruhoe and Ruapehu when the cloud lifts. When we head back we meet three other groups out for the day. As we were coming down we met up with Peter Berry who had come to help us jump-start the truck. I am feeling tired and exhausted but I have had an amazing experience and have enjoyed myself. It was not like anything I was expecting. Thank you, it was a wonderful trip. BM

Trampers: Peter Brown, Glenda Hooper, Christine Hardie, Jason McKinley (driver), Briar McKinley, Brent Hickey, Scott Campbell

#2232	Te Mata Park – The New Track	Wed 14 Aug 2013
--------------	-------------------------------------	------------------------

After a number of mid-week cancellations, due to weather, it was pleasant to have a local outing in favourable conditions. This sentiment was confirmed by the large number turning up – a small traffic incident delayed the Taradale members but eventually everyone walked off via the redwoods and managed to avoid most of the muddy patches. The new track goes over Chambers farmland before a steep climb with many hairpin bends. It joins up on top with the Goat Track just south of the peak.

Graeme found a nice spot with a view and out of the cool wind for lunchette where we were watched by the spring lambs. We made our way back to the main carpark where Geoff and his wheelchair had kept a fatherly eye on our vehicles. Most then went to Birdwood Cafe for second lunchette to round off a perfect day on a track which was new to most and a pleasant introduction to three possible new members. RB

Party: Christine Hardie, Heather Stephenson, Janice Love, Cath Wakefield, Penny Isherwood, Bobby Couchman, Marion Nicholson, Barbara Phillips, Bruce and Christine Turner, Margaret and Dick Mowll, Marjorie Musson, Geoff Clibborn, Scott Campbell, Alasdair Shaw, Garry Smith, Roy Frost, Graeme Hare, Rodger Burn

#2233	Rangiwahia Hut	24 - 25 Aug 2013
--------------	-----------------------	-------------------------

We had a wonderful scenic drive to the Apiti district with clear views of the Ruahines, Ruapehu and a brief glimpse of Egmont - a pretty uneventful journey except for a wild duck which flew in front the truck. For such a small bird there was quite a bit of damage to the front grill! Arrived at the newly landscaped carpark at Renfrew Road just after 0930 to be greeted by the Palmerston North Tramping and Mountaineering Club party of five. After a quick snack and deciding on which route to take, we set off shortly before 10.00am.

A party of six (Deadman's Track) climbed rapidly up through mainly beech forest, popped out onto the tussock country before sidling around to the Mangahuia high point(1583m) with 360 degree views of Manawatu plus Tongariro, before following a ridge down to Rangiwahia Hut, a four to five hour trip.

The other five members followed the standard route into the hut on a well-benched track that winds its way through red and mountain beech, kaikawaka, celery pine, and, at higher levels, the large yellow buttercups with tussock near the hut. A track construction crew has been working on this track (the weather causing big delays) and there are numerous steps/ladders being installed. The new piece now climbs high above the old slip, re-joining the original track near the wooden, arched bridge. We lunched at the hut, admired the beautiful artwork on the toilets and firewood shed done by Mangaweka artist, Julie Oliver, before traversing the Mangahuia Range to meet up with the other party. There were pockets of snow on the tops left by the southerly a fortnight ago.

The thirteen-bunk hut was full with our combined party, the six track construction crew members and two other couples. After having tea, three of our party decided to walk back out to the road end and then, with great hilarity, we managed to have everyone on a mattress, several having to top and tail. The evening was very clear with the sky littered with stars and constellations, and the inevitable next morning frost. No-one wanted to do any exploring so we returned to our vehicles, vowing to plan another joint trip. The HTC bunch

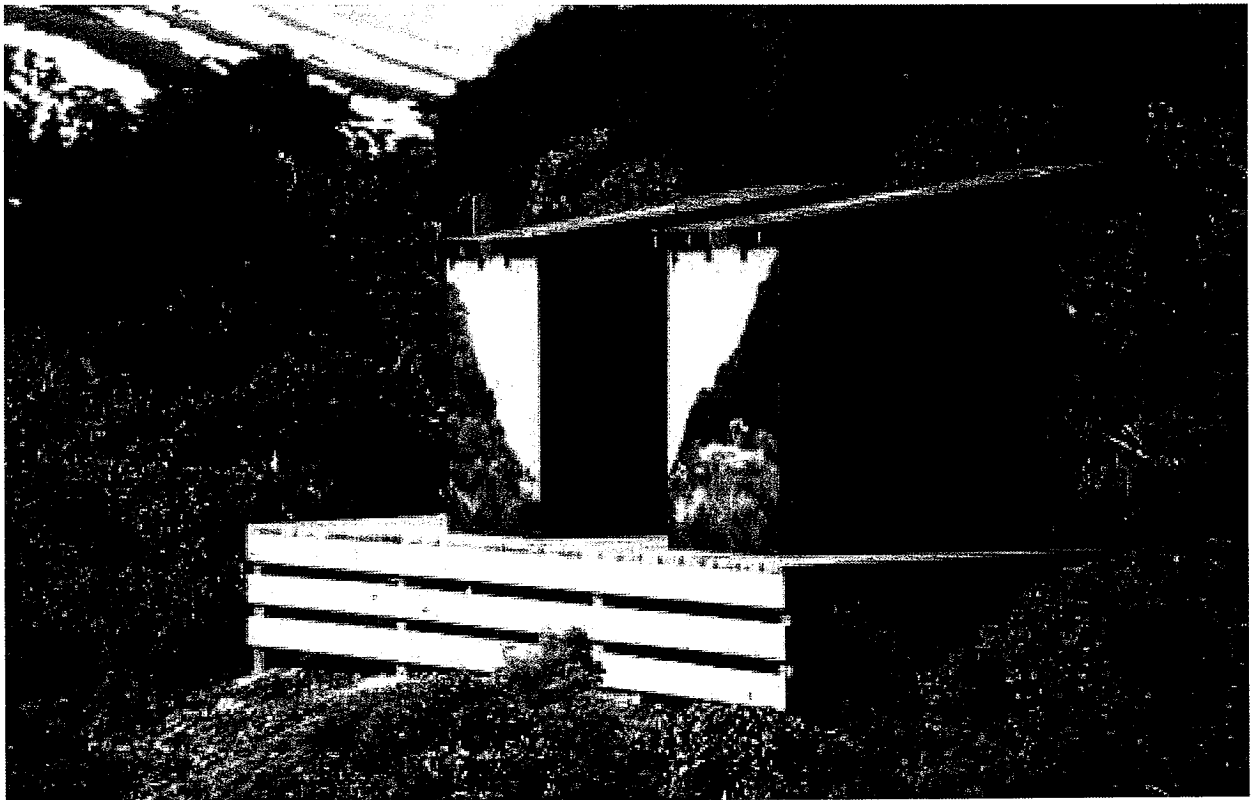
Pohokura

returned via the Pohangina Valley, stopping off at the 30 minute Kahikatea/Totara Walk and the slightly longer Fern Walk. A very pleasant weekend, new country for some and a big thank you to Jason for driving and for Monty doing the original trip planning. SL

Party: Susan Lopdell (organiser by default), Graeme Hare, Mark Hutchinson, Janice Love, Glenda Hooper
Jason McKinley



PNTMC & HTC combined trip to Rangiwahia Hut 24-25 August.



The very attractive toilets at Rangiwahia Hut.

#2233

Bell Rock

Wed 28 Aug 2013

With the weather forecast looking good, 12 of us left Pernel and met two others at the Tutira Store for the Mangaharuru Range. The clouds were low and the wind on the tops doing its normal thing - blowing a gale! Going through the bush was lovely with the birds singing. We stopped at the fence line for a break and to put more clothes on, ready for the cold wind. I'm sure the dome at Bell Rock is getting smaller with the battering it takes from the weather but is still a great sight, especially for the two who had not seen it before. Didn't spend a lot of time having lunch because of the cold so we gathered back at the fence line and decided to carry on along the ridge. It was a good choice as, coming over a brow of the hill along the way, we met Ken Hunt at the new predator fence gate. He invited us in to have a look around, showed us the nesting boxes and explained to us the system of feeding the petrels. On the track going down we met one of the DoC workers who had been collecting the track sheets and she showed us one that had rat feet marks on it! They were going to do a bait drop in a week. Stopped at Lake Opouahi for afternoon tea and were home by 5 p.m. A good day was had by all and thanks to Christine for driving. MN

Party: Marion Nicholson [leader], Penny Isherwood, Rodger Burn, Garry Smith, Ray Frost, Maureen Broad, Brent Hickey, Pauline Mahoney, Philip and Sharon Mardon, Scott Campbell, Christine Hardie, Christine and Bruce Turner

#2234

Te Iringa – Kaimanawa FP

8 Sept 2013

This trip was originally scheduled to be in the Whirinaki Forest Park area but, due to closure of our preferred road access, our ever-resourceful trip organiser, Susan, pulled together this excellent alternative day tramp. With 11 trampers aboard we set off in the club truck from Pernel at 6:30a.m. The previous day's sad loss of the Ranfurly Shield was quickly put behind us and it wasn't long before the usual good-natured yarns and tall tales started to flow in the comfort of the economy class HTC recovery ward. After driving up the Napier-Taupo road for an hour and a half we turned off into Taharua Road which is also the access to Poronui Station and Sika Lodge. After passing through Poronui Station farmland for some distance the road swings to the right into Clements Mill Road and passes the Sika Lodge buildings. It was only a short drive past this point, along a fairly narrow bush-lined road that we arrived at the start of our tramp.

Everyone was all booted up and ready to hit the track by 9a.m. when one of our party members - who shall remain nameless - reported a gear malfunction with his trekking pole. This was promptly sorted out with the use of a pair of slip jaw pliers supplied by Lex from the truck's tool kit. From the carpark the well maintained benched track meanders through native bush at a nice, steady gradient up to the high point of Te Iringa at 1240 metres. We all headed off in several little groups at a nice leisurely pace with the first party of three arriving at the old Te Iringa Hut site in just over an hour. After a brief stop for a bite to eat the leading party comprising Janice, Mark and Des continued on along the track towards Oamaru Hut for another two hours. We had lovely views at several vantage points along the way of the snow-covered Kaweka Ranges and the huge Poronui Station. Abundant birdlife was also encountered at regular intervals along the track. We took great delight in observing and trying to photograph several small flocks of very fast-moving whitehead (*Mohua albicilla* or *pōpokote*). After stopping on the side of the track for a short lunch break, with more wonderful views through the bush overlooking the Tikitiki Stream and along towards the Kaipō River footbridge, we retraced our steps to arrive back at the truck with the main body of our tramping party at 3p.m. A short detour was made to check out the state of the Waipunga Bridge before arriving safely back in Hastings at around 5p.m. DS

Party: Susan Lopdell (leader), Lex Smith (driver), Penny Isherwood, Mark Hutchinson, Janice Love, Glenda Hooper, Roy Frost, Scott Campbell, Des Smith, Garry Smith, Peter Berry

HTC BIKE TRIPS



Raukawa Area

Wed 15 May 2013

With the generosity of the Hastings Golf Club (thank you, Marion) we were able to make their facilities our base for today's ride. Also very helpful was the weather: no wind, overcast, quiet country roads..... all of this a cyclist's dream.

Our ride took us from the Golf Club, through Bridge Pa and along the Highway 50 cycle path to Valley Road. We re-grouped there and carried on. Nice to be on the quiet roads as we successfully negotiated a herd of cattle on the long acre. Some of the team diverted to visit Heather's restored Rabbit in her brother's shed and eventually we all got to the Raukawa Community Hall where we had a lunchette and solved most of the problems of the world - or so we thought. Christine left early to get back in time for yet another hospital shuttle and, at about this time, the sun finally appeared so it was with some reluctance that we moved on our way with about 14kms to go and those hills to be sweated over. But everyone arrived safely back at the Golf Club where some had coffee at the cafe (which is open to the public) whilst the rest moseyed off home.

Cyclists: Christine Hardie, Heather Stephenson, Rodger Burn, Alasdair Shaw, Marion Nicholson, Marjorie Musson, Pam Pike, Raewyn Ricketts, Alan Berry, Penny Isherwood, Bruce and Christine Turner, Judy McBride, Graeme Hare, Anne Cantrick, Jim Hewes

Waimarama – Haumoana Area

Wed 22 May 2013

Ten bike riders left Summerset Village at 9:15 on an overcast morning with cool temperatures to go down the picturesque River Road and on to the cycle way. We noted the coffee wagon site along the way and, at Black Bridge we were joined by Penny and Graeme who had come over from Taradale. Not long after this the sun appeared. The ladies biked quickly along the sea front, noting such local features as the driftwood fort (still standing after a long, hard summer) and various seabirds in the lagoons. They reached Clifton Café first and waited for a long time for the men to appear. Eventually someone was anxious enough to make a phone call and discovered that they had stopped to repair Graeme's puncture which had naturally occurred to make his day. On the return ride we stopped at the Haumoana Lagoon to have a closer look at the ten royal spoonbills standing on a fallen dead tree.

Cyclists: Christine Hardie, Bobby Couchman, Penny Isherwood, Pam Pike, Heather Stephenson, Graeme Hare, Garry Smith, Maureen Broad, Rodger Burn, Marion Nicholson, Marjorie Musson

Seafield Road in Disguise

Wed 12 June 2013

Over the Taradale hills and off to the south we could see huge heavy grey clouds that weren't budging; Hastings people reported rain! The forecast was not great but there were clear patches to the north and east. The organiser did not cancel and ten riders assembled at the bottom of Park Island Reserve.

My Lyn tried to wriggle out of participating because, despite being reminded on the phone, he had not brought his coat! However, Christine had a spare one which fitted so he had no choice but to go on. It was decided to abandon the scheduled route and head for the cycle-ways, the sea front, the airport and the caff. Light showers chased us via a moderate southerly as we headed down the main road and round the estuary cycle path. Once we got going it was fun to speed along with the wind pushing us.

There were no mishaps although we were strung out by the time we reached the Westshore Pub and one group lost sight of another for a while. The likely lads – Lyn, Ray and new rider, Ian – did some extra

September 2013

Pohokura

mileage at a fast clip north of the airport to Bay View while the rest of the contingent cycled more sedately along the beachfront cycleway to Snappers. Everyone regrouped for a leisurely drink and chat about overseas travel before venturing out at intervals into the head wind. Fortunately the rain showers held off until we all made it back to Park Island – we all agreed that it had been much more fun than hanging around at home!

CH

Cyclists: Christine Hardie (organiser), Garry Smith, Ray Manning, Marjorie Musson, Marion Nicholson, Judy McBride, Rodger Burn, Peggy Gulliver, Lyn Gentry, Ian Stewart

Latitude 40 Degrees South Circuit

Wed 21 August 2013

Nineteen cyclists met at Latitude 40 South Café opposite the Waipukurau Railway Station at 9 a.m. Such a large group attracted the attention of the local media and we had a group photo taken by a local reporter with a promise to be featured in the CHB newspaper. The day had dawned foggy, but cleared as we headed up Racecourse Road and onto Porangahau Road. By then the sun was doing its best to shine. We turned right on to Arlington Road and carried on to Woburn Road with the first hill spreading us apart a little. The leaders stopped at Hinerangi Road and we headed up the road a little for smoko on bank so that we could enjoy the scenery. Marj and Marion decided to take a shorter route back, and the rest of us continued along Hinerangi Road to Aorangi Road, meeting up with Fraser Road where we could feel the wind starting to get up. We turned right into Station Road, then Mahareke Road past the Lime Works, then right again into Waiou Road. Then it was up a long, winding hill. It was nice to speed down the other side, and left on to Hatuma Road and into a very stiff head wind back to SH2. Lastly, it was back along Takapau Road to the Café where we had lunch with much relief. Total distance covered was 42km.

Everyone enjoyed the Central Hawkes Bay countryside and it was good to have such a large number taking part.

B&CT

Cyclists: Dennis Beets, Rodger Burn, Anne Cantrick, Bobby Couchman, Peggy Gulliver, Christine Hardie, Graeme Hare, Jim Hewes, Penny Isherwood, Marjorie Musson, Marion Nicholson, Joan Ruffle, Alasdair Shaw, Garry Smith, Ian Stewart, Bruce and Christine Turner [organisers], Richard and Vivienne Waterer

Waipawa to OngaOnga & return loop

Wed 18 September 2013

Not a record, but a very good turn-out of 18 keen cyclists for this 32km (approx.) ride. The morning was cool and a few showers in the forecast, but thankfully, no sign of them.

A beautiful sunny day with clear views of the Ruahine Range was enjoyed by all as we crested the one hill shortly after leaving our cars on OngaOnga Road.

Whizzing down the other side, we knew that the climb back at the end of our ride would be a challenge.

During a brief stop at the Plantation Road intersection a certain Mr Hare decided that we had time for a diversion to have a look at the river. SO.... off some of us "Hared" through a huge dairy farm with massive irrigators and a rather 'pongy' waste water pond. The river looked much as rivers do ??!

On to OngaOngaA break at the store for refreshments was welcome.

On the return journey we had a cool wind, especially when in the shade of shelter-belt trees, but THAT HILL had us well warmed up before we reached the cars.

Some of our group gathered at the Band Rotunda in a small, but lovely park, behind the shops in Waipawa, for more refreshments and a convivial time in the sunshine.

My thanks to Marion for being the "navigator" and everyone for making our ride a lot of fun. Also thanks to Roger for giving me lots of guidance and making sure that all went well in his absence.

Cyclist: Christine Hardie, Heather Stephenson, Penny Isherwood, Marion Nicholson, Bobby Couchman, Garry Smith, Brent Hickey, Pam Pike, Christine and Bruce Turner, Richard and Vivienne Waterer, Peggy Gulliver, Judy McBride, Ian Stewart, Dennis Beets, Graeme Hare, Marjorie Musson.

From the Archives

Fifty Years Ago

This year [2013] is the 25th anniversary of the construction of the present Kiwi Saddle Hut and, after the official opening, the predecessor hut was summarily pulled down. On March 30th and 31st 1962, club members were busy on a working party at this earlier building, not without some difficulty as recorded in Pohokura 94. Unlike the replacement hut working bees, no helicopters were in evidence.

It was hoped to put the floor in the hut on this trip but rain setting in at 4 o'clock put paid to that idea. Five rolls of steel to close in the porch and cover the eastern end of the hut had been carried in and, as each roll weighed 50 pounds, it was of necessity a slow trip. Sunday dawned with rain still falling but, after breakfast, relays of workers bashed, cut, bent and attached 19-gauge steel to the hut amid cries of anguish and pain through fingers and hands being cut and bruised in the wet conditions. Nonetheless the job was eventually done and, after a late lunch, we set off back to the truck.

At last, at least one party stumbled over the correct route to the top of the shingle slide in mist. Since then more poles have been added. Once again thanks are due to those who calmly (at the start anyway) add the burden of working-party gear to their packs and hump in loads often in excess of 90 pounds! *Over 40kg

Party: Maury Taylor (leader), Peter Lewis, Colin Hope, Bill Morison, Russell Berry, Ross Culver, Jim Price, Jim Glass, Margaret Mison, Diane Dawson, Barbara Butler, Annette Tremewan

CLUB NEWS

Annual General Meeting

The AGM of Heretaunga Tramping Club will be held at the Harriers' Clubrooms, Sylvan Road, Hastings on Wednesday, 13th November after the regular 7.30pm meeting. Nominations are needed for all positions.

Future Trampler

Anne and David Blake have a second baby daughter, Teresa, born 17th June 2013. Congratulations from us all.

Emergency Personal Locator Beacons (EPLB) Stored in Truck

There are three EPLBs stored in the truck for use by HTC trampers, on club tramping trips. **First and Second Call** on two EPLBs is for HTC tramping: one for each of the A & B parties. The notebook stored with the EPLBs must be filled out to record who has what and when. After the tramping trip, promptly return the EPLB and sign off in the notebook.

Third Call on one EPLB is available for use by club members on private tramping trips.

Permission for this private EPLB use must be granted by the Club Captain (1st) or President (2nd)
Two EPLBs must always remain in the truck for HTC tramping use.

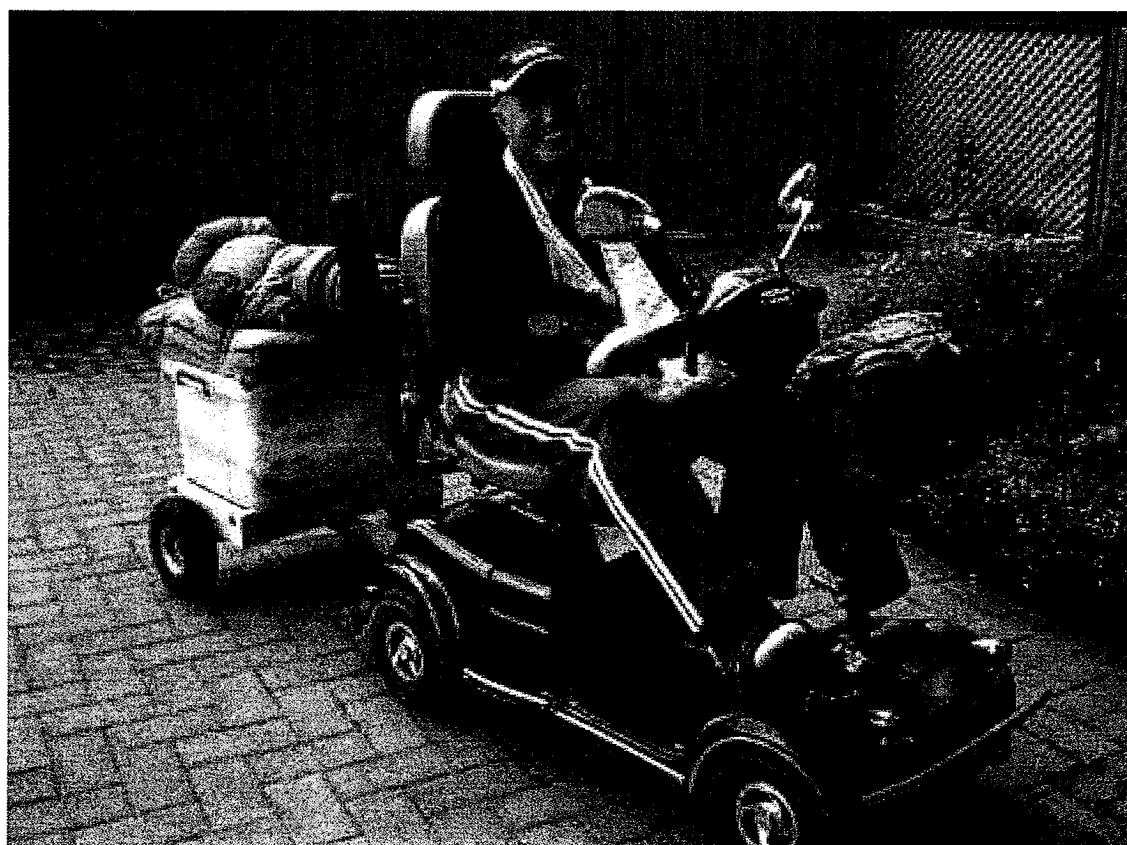
Please keep to these rules. HTC has provided these EPLBs at cost to protect its members. They are for club use before anyone else. Any queries, contact the Club Captain 8446697.

Obituary

Havelock North identity, **Thelma Tasman Smith**, died on August 4th after a number of health setbacks. Thelma was an active member of HTC in the late 1980s and early 1990s, and came out on many trips. She also competed in the Kaweka Challenge. A number of HTC people attended her funeral and we sent our condolences to her family overseas.

HTC Truck Man, Geoff

You can't hold him back! While doing yet another maintenance job on the club truck, Geoff C snapped his Achilles tendon – while trying to push the vehicle! He soon got his ideas together though and here he is going away for the week-end!



Do you want your *Pohokura* sent via email to you as a pdf?

Any photos included will be in colour and you can print it as you wish.

You have the following options:

1. We send you a pdf copy via email to try as well as the usual magazine hard copy.
2. We send you a pdf copy only via email.
3. Don't reply to this and we will keep sending you the usual magazine hard copy.

If you would like to avail yourself of these options, send an email to the Editor, randall.g@xtra.co.nz

Personal Contact Information:

If you change your mailing address, home phone number or e-mail address please inform the Club Editor - Phone 845 4913. Otherwise, we could lose contact with you.

ITEMS for SALE from the HTC SHOP

The Club has a number of useful items for sale at discounted prices. Samples are displayed for you to see on the side table at each general meeting. Please support this service.

New Topo 50 Maps	*Approx	\$5.00
Large Blue survival bags		\$5.00
Smaller white pack liners		\$2.50
Metal HTC club badges		\$8.00
Blue/Red HTC caps with emblem		\$17.00
Bushcraft books		\$12.00
Safety in the Mountains booklet		\$5.00
New Safety in the Mountains book		\$12.00
by Robin McNeill		

Map Orders will taken at Club Meetings or via Marjorie Musson, mussons@xtra.co.nz or Penny Isherwood, p.isherwood@orcon.net.nz and collated in batches (to save on courier charges).

The next bulk order will be sent after 16th October meeting, so should you need maps for Labour weekend or over the summer months, now would be a good time to order

PENNY has the following items [in Taradale]:

Small White FMC pack liner	1
Metal HTC club badges	2
Blue/Red HTC caps with emblem	2
Bushcraft Book	1
Safety in the Mountains booklet	1
New Safety in the Mtns book by Robin McNeill	1
Copy of New Topo 50 maps order sheet	1

Heretaunga Tramping Club Meeting and Trip Information

Date	Speaker	Topic	Host	Supper Help
18 Sept	Glenda Hooper Ros Lusk	Photo Competition	Heather Stephenson	Maureen Broad
02 Oct	Training Committee	Equipping Yourself	Penny Isherwood	Liz Pindar
16 Oct	Guest Speaker	To Be Decided	Marion Nicholson	Garry Smith
30 Oct	Susan Lopdell	Tramping in Scotland and Ireland	Judy McBride	Brenda Thomas
13 Nov	AGM	Annual Event for Everyone	Helen Hare	John Montgomerie
27 Nov	Penny Isherwood	Somewhere Overseas	Rodger Burn	Joan Ruffell
11 Dec	Everybody	Last Meeting of the Year	Paul Whately	Marj Musson
08 Jan	All Members	Holiday Tramps	Geoff Clibborn	Randall Goldfinch
22 Jan	Guest Speaker	Pending	Janice Love	Bobby Couchman

Meetings Sub-Committee: Christine Hardie, Penny Isherwood and Graeme Hare.

Please refer ideas for club night speakers and activities to us.

Supper: Put out cups, wash dishes, leave kitchen clean and tidy; generally help Raewyn.

Sweep floors, check that heaters and lights are off at the end of the meeting.

ARE YOU FIT ENOUGH TO TRAMP?

Even the easiest of club trips requires a reasonable degree of fitness and, from time to time, tramps have been seriously delayed by unfit party members. While individuals may have varying degrees of basic fitness it is unlikely that a person who has a sedentary job or who plays no sport will manage an average B Party trip. The best preparation for tramping is tramping and there are hilly places in Napier and close to Hastings which make excellent training areas. For example, a walk from the cattle-stop car park in Te Mata Park to the top of the peak via the big redwoods and back to the cattle-stop via the roadside track with an eight kg pack should take about 70 - 80 minutes. Further, this pace should be able to be maintained for five to six hours.

TRIP GRADINGS

EASY: 4 - 6 hours tramping; suitable for beginners.
MEDIUM: 6 - 8 hours tramping; suitable for those with some experience.
HARD: 7 hrs + tramping; experience and a high level of fitness necessary.
Unless otherwise specified an "A" trip would have a **HARD** grading and a "B" trip a **MEDIUM** grading.

GEAR LIST FOR DAY & WEEKEND TRAMPS

<u>Wear/Carry</u>	<u>DAY TRIPS</u> <u>Carry</u>	<u>WEEKEND TRIPS</u> <u>All items listed for day trip plus</u>
Pack and pack liner	Map & compass	Sleeping bag
Boots and gaiters	High energy snacks	Sleeping mat
Socks	At least a litre of water	Food for three additional meals
Parka and over-trou	Lunch	Cooker, billy and matches or lighter
Fast-drying shorts	First aid kit	Extra snacks
Fleece or woollen jumper	Torch, spare batteries and bulb	Toilet gear, small towel and toilet paper
Long-johns & singlet	Sunscreen	Additional warm clothes
Sunhat & warm hat	Emergency food	Plate, mug, cutlery
Gloves/mittens	Survival kit (whistle, cord, matches, pencil, paper)	Tent/fly if required
Overmitts		
Whistle	Complete set of spare warm clothing	

Leave at truck/car: Complete set of clothing for the return trip and a mug with something to flavour your hot water from the Clibbornette.

OVERDUE TRAMPERS

Although returning parties plan to be out of the bush before dark safety considerations must come first. This may mean that parties are late returning to transport. Even after arriving back at the transport, it may take two hours or more to return to the embarkation point. Beginners should make sure that anyone who might worry about them is informed of this. Leaders will try to get a message through to one of the "overdue contacts" if return seems likely to be later than 10.00 pm. All newcomers should ensure that their own emergency number is noted in the party list that the leader leaves in town. For all enquiries about overdue trampers please telephone one of the following:

Susan Lopdell 844 6697

Graeme Hare 844 8656

Glenda Hooper 877 4183

Cancellations: If you cannot make a trip please contact the leader BEFOREHAND to avoid unnecessary delays for the rest of the party.

Club Meetings: These are held every second Wednesday (the one before a weekend tramp) at the Harrier Clubrooms in Sylvan Road, Hastings. Doors open at 7.30 pm; visitors are welcome.

TRIP LIST 2013-14

Although the area for the trip is generally adhered to, the suggested objectives may change for a number of reasons. For pre-trip enquiries contact the organiser or Susan Lopdell Ph 844 6697. Please email trip requests to susansplace@xtra.co.nz



20 - 22 Sept 2013 Northern Kaweka \$15 Maps: BH37, BJ37
Party A: Gums carpark – Te Puia Hut – Mangaturutu Hut – Venison Tops – Middle Hill out to Mahaku Rd.
Party B: Middle Hill – Ballards Hut – Makino Hut – Te Puia Hut – Gums carpark via riverside track.
Party C: Three days to wander into both Te Puia and Middle Hill Huts, and do walks in the area.
Organisers: A] John Montgomerie Ph 877 7358 B] Peter Brown 8772907 C] Glenda Hooper Ph 877 4183

25 Sept Wed Tramp to MacIntosh Hut Map BJ37
 Down to the river and up to the MacIntosh Plateau. Back the same way.
Organiser: Graeme Hare Ph 8448656

2 Oct Wed Cycle the Tour of the Bay Circuit
 Start at Hastings Golf Club
Organiser: Jim Hewes Ph 877 6784

5 - 6 Oct Maungataniwha \$15 Map BH39
 Go into an ecological area to assist with installation of small skink pitfalls; plenty of time to explore, learn about its history and vision for the future.
Organiser: Mike Lusk Ph 877 8328

9 Oct Wed Tramp Thomas Bush and Lake Opouahi
Organiser: Bobby Couchman Ph 877 8557

16 Oct Wed Cycle Clive via Black Bridge & Moore Rd onto cycle paths to Tandem Café & return on cycle ways
Organiser: Mr Lyn Gentry Ph 875 0542

20 Oct Te Iringa – Mt Cameron \$15 Map BJ37
 From the Napier - Taihape road climb up to Te Iringa and along to Mt. Cameron; return same way.
Organiser: Glenda Hooper Ph 877 4183

23 Oct Wed Tramp up Kuripapango Hill (4100)
 From the Lakes carpark to the radio mast and beyond.
Organiser: Christine Hardie Ph 844 9590

25 - 28 Oct Whirinaki Forest Park \$35 Maps BG38, BG39, BJ37
Party A: Tramp in the beautiful podocarp forest with abundant birdlife: visit Moerangi, Te Wairoa, Mangakahika, Central Te Hoe, Upper Te Hoe and Upper Whirinaki Huts.
Party B: Day trips from the various roadends to Arahaki Lagoon, Oriuwaka Ecological Area, Upper Whirinaki Hut, Upper Te Hoe area - lots of scope.
Organisers: A] B]

30 Oct Wed Cycle in Argyll East

Start near Pukehou School and go up College Road, past Argyll East School and on to the top. Then down Te Onepu Road to Hugh McBain's farm

Organiser: Alasdair Shaw Ph 877 6225

3 Nov Cairn Trip – Kaweka FP

\$15

Map BJ37

Climb to the memorial cairn atop the main Kaweka Range where the Club President holds a brief memorial service. Follow the spur of your choice down to the Makahu carpark.

Organiser: Christine Hardie Ph 844 9590

6 Nov Wed Tramp up Mount Tauhara

Not far from Taupo with great views over Kaingaroa and the Central Plateau.

Organiser: Rodger Burn Ph 877 6322

13 Nov Wed Cycle the Maraetotara Valley

Party A: From Lake Lopez towards the coast, along the flat towards Waimarama then up Okaihau Road and along Maraetotara Road to the start.

Party B: From Lake Lopez along Maraetotara Rd to Mohi Bush and return.

Organiser: Mr Lyn Gentry Ph 875 0542

16 - 17 Nov Mount Ruapehu

\$40

Map BJ34

This is a joint HTC-Wanganui TC-DoC working bee on Ruapehu removing pinus contorta: nothing too strenuous, with a BBQ and social time on Saturday evening.

Organiser: Susan Lopdell Ph 844 6697

20 Nov Wed Manawatu Gorge Track

Fourth time lucky to check out the restored track in the gorge.

Organiser: Garry Smith Ph 844 9931

27 Nov Wed Cycle Havelock North to Hastings

Hills to start with then easy countryside afterwards; stop at Birdwood Café on the way.

Organiser: Peggy Gulliver Ph 879 7763

4 Dec Wed Riverside and Cycle Paths Clean-up

Our annual civic service with HB Regional Council.

Organiser: Graeme Hare Ph 844 8656

1 Dec Shutes Hut – Ruahine FP

\$15

Map: BK37

Walk into this historic hut via the Komata Track and cool yourself off with a summertime dip in the river before winding your way back up to the truck.

Organiser: Mark Hutchinson Ph 878 2360

11 Dec Wed Cycle Raukawa and Valley Roads

Steep start from Maraekakaho War Memorial up Whakapirau Hill then on through the attractive farmland.

Organiser: Jim Hewes Ph 877 6784

13 - 14 Dec Christmas with Hot pools and Bats

\$TBC

Our last official trip for 2013: a chance to have a Kaweka tramp plus a dip in the Mangatainoka Springs before going to Ball's Clearing to seek out our native bats. On Sunday join us for Xmas lunch and festivities organised by club members.

Organisers: Social Committee

18 & 25 Dec Weds Recess

No official programme but a holiday cycle could be arranged for interested members.
Happy Christmas to everyone.

1 Jan Wed 2014 Members Choice

Organiser: Let Rodger or Christine know your favourite activity to see in the new year.

5 Jan 2014 Beach Trip \$15

A beautiful summer's day and what better way to start the new year than a beach trip from Waimarama to Red Island?

Organiser: Brenda Thomas Ph 027 628 5979

8 Jan Wed Cycle to a Undisclosed Destination

Another mystery trip from our man at Te Awanga.

Organiser: Mr Lyn Gentry Ph 875 0542

11 - 12 Jan Smiths Stream Hut – Ruahine FP \$15 Map BL36, BK36

From Alder Road walk to Hinuera Hut then drop down to Smiths Stream Hut for the night. On Sunday walk to the Waipawa River and carpark via Middle Stream track. Option for day trippers on the Sunday: tramp into Middle Stream to meet up with the weekend party.

Organiser: Susan Lopdell Ph 844 6697

15 Jan Wed Yeomans Track

Down the highway track to Ellis Hut area

Organiser: Judy McBride Ph 876 9756

19 Jan Northern Ruahines \$15 Map BK37

Enter the Ruahines at the old Kaumatua Hut site, sidle south to exit on the last farm along Mangletton Road.

Organiser:

22 Jan Wed Cycle Apley Rd Circuit

A bit of hill work then gather at Puketapu Pub.

Organiser: Rodger Burn Ph 877 6322

26 Jan Boundary Stream \$15 Map BH39

This mainland island keeps on amazing all visitors - new bird species are being reintroduced into this area.

Organiser: David Blake Ph 835 3284

29 Jan Wed Beach or Riverside Walk

More information closer to the time.

Organiser: Rodger Burn Ph 877 6322

8 – 9 Feb Waikamaka Hut \$15 Map BK36

Our club hut needs its annual cleaning and maintenance - all hands on board.

Organiser: Huts Committee

