

HERETAUNGA TRAMPING CLUB (INC).

P.O. BOX 4086 MAYFAIR, HASTINGS

"POHOKURA"

Bulletin No 188

December 1994

Patron: Arch Lowe

President:	Lyn Gentry (Mr)	8750542
Vice President:	Susan Lopdell	8446697
Secretary:	Craig Shaw	8437242
Treasurer:	Dianne Lawlor	8448086
Club Captain:	Ed Holmes	8446032
Editor:	Lyn Gentry (Mrs)	8750542
Committee:	Leo Brunton	8447228
	Anne Cantrick	8448149
	Geoff Robinson	8787863
	John Montgomerie	8777358
	Wayne Hatcher	8772186
	David Harrington	8430290



=====

Sub-committees:	Spokesperson:
Fixtures:	Susan Lopdell: David Harrington, Graham Lawlor, Anne Cantrick, John Montgomerie
Huts:	Wayne Hatcher: Leo Brunton, Craig Shaw, Graham Lawlor, Lew Harrison
Truck:	Geoff Robinson: Leo Brunton, Martin Mallow
Training:	John Montgomerie: Leo Brunton, David Harrington, Neil Mora, Lew Harrison
Meetings:	Anne Cantrick: Lyn Gentry (Mrs), Wayne Hatcher, David Harrington
Environment:	Shirley Bathgate: Mike Lusk, Glenda Hooper
Junior Rep:	Christiana Stevens:
S.A.R.	Ed Holmes: Craig Shaw
Family Trips:	Glenda Hooper:
Social:	Leo Brunton: Lyn Gentry (Mr)
Trip Reports:	Jim Glass:
Historian:	Jim Glass:
Supper:	Arch Lowe: and helpers from floor
Gear Hire	Karen Berry: Phone 8776205

=====

CONTENTS

Annual Reports	2 -3	H.B. Weta	18
Trip Reports	4-12	Meetings - Hosts & Programme	19
Family Tramps	13	Club News	19
Napier-Taihapa Trailblazers	14	HTC Income & Expenditure Acc.	20
Science & Tramping	15	Fixtures List	21-11
Inwards Correspondence	16-17	Club Phone List	back page

## ANNUAL REPORTS

### PRESIDENTS REPORT

We had a sad start to the year with Stan Woon's passing. He was a great father figure to us all, and in his memory we now have the Stan Woon Memorial trophy to be presented annually for the Trampler of the Year.

Our new Club-rooms have worked out very well and we now take them for granted, and feel very much at home there.

We have had a steady increase in membership with 13 new members this past year. The Fixtures Committee has organised extra tramps per trip - A, B, C, and Local, when weekends away are had, and we have had some chocka-block truckloads. It is pleasing to see so many have taken the opportunity to get out.

A special thanks to Karen Berry who took over running our gear hire from her home. The social side of the Club has been well catered for this year, and a big thanks to all concerned here.

It has been an honour to be your Club President for the past year. To me it has been an eye-opener to the many small problems that need to be ironed out as best as possible. I thank all committee members for their efforts, and for the support from many quarters within the Club which has been greatly appreciated.

Lyn Gentry (Mr)

### CLUB CAPTAINS REPORT

Perhaps you could say a busier year than normal with the introduction of alternative tramps to run in conjunction with longer trips, but these have been successful although numbers have been low.

I took over as acting Club Captain midyear from David Harrington who stood down. Tramps for year ended 30th September have ranged from 14 days in the South Island to 1 day excursions which have been as follows: 1 day tramps - 13 with an average of 18 people. 2 day tramps - 9 with an average of 15 people. 3 or more days - 4 with an average of 16 people. The demand seems to be for front country tramps of easy to average fitness. This I think is due to the large turnover of new people who want to visit these areas first.

Huts have been touched on this year although more working bees are needed.

Waikamaka received a clean up and repairs to the chimney, but still needs a paint. Kiwi Saddle has lining material all cut and pre-painted and along with a few bales of pink batts awaits airlifting in. Damage to the interior door by a visiting scout group is being followed up and they will purchase and prepaint, then carry the door in in the near future. We had a working party to Kaweka to do a few chores and replace bunk boards - why bother? Boards have been burnt again. Howletts needs assesment as I have not been there this year.

Excellent tramping this year by many people and I hope it continues in the spirit of these past few months. Many thanks.

Ed Holmes

### SEARCH & RESCUE

It has become obvious this year that although more people are going bush they are becoming less and less prepared. Since May Ross has had 9 callouts of which 7 have been attended including our annual Sarex for which I was Field Controller and some 16 bodies from our Club attended.

We travelled to Waipunga to assist Taupo with a search in which 21 people from H.T.C. were present. In July I received a call at 10.30pm and told to get 5 people and meet at Hastings Police Station at 11pm. 'We did it' and travelled south to Triplex area where quite by chance John Montgomerie and myself found the two 14 year old girls at 4am.

Others have been a body in the river by Ngaawaparua Hut, 2 seperate searches for hunters in Mangatainoka River. a possum trappers boy in the TukiTuki at Mill Farm and over Labour Weekend the search for 8 children and 3 adults.

My love for helicopters has been handsomely rewarded like never before. A special thanks to those involved in S.A.R. as it is a thankless task made bearable by being in the lucky team that will one day find a missing party.

Ed Holmes

## TRUCK REPORT

It has been four years since the Club purchased and built our present truck, and it has completed another 12 months of trouble free motoring covering 12,255kms for the year.

The truck transported our members on a successful trip to the South Island last Christmas and to Mt. Taranaki this last Labour Weekend, and to various other destinations around the North Island.

The audit will show the costs of running the truck over transport fares collected. I would like to thank on behalf of the truck sub-committee all those members who have helped maintain our truck and also the Club drivers who have given of their time.

Geoff Robinson

## ENVIRONMENT REPORT

Submissions to the following:

Federated Mountain Clubs re Public Access to the Greenstone & Caples Valleys to secure public use of same, join to Fiordland National Park for security and maintain as such.

To Messrs Bolger, Storey, Upton, Forest Heritage Fund and Waitutu Corporation to leave untouched the Waitutu Forest & Prohibit logging for all time.

To Ministers of Conservation, Minister of Lands etc. strong protest re proposed High Country sell-out to foreign agents. Keep all these lands in DoC hands or Government buy same for protection. Many of these lands have outstanding recreation and conservation value.

Paparoa National Park and new N/W Nelson Park added to our growing list of same.

To F.M.C. re Draft Recreation and Tourist policy. Refer to articles in the Bulletin.

Letters to various M.P.'s and P.M. re appalling lack of funding for DoC which is always at the end of the handouts as not considered enough of a dollar earner. A Visitor Strategy Discussion Document has been put out by DoC for comments by this Club re charges, facilities, services, biological understanding of land, bush, birds etc. by Government and Tourist operators. There are plenty of loopholes etc. This is most important as it affects us all in the long term and our tramping in the future. Submissions close Jan. 1995

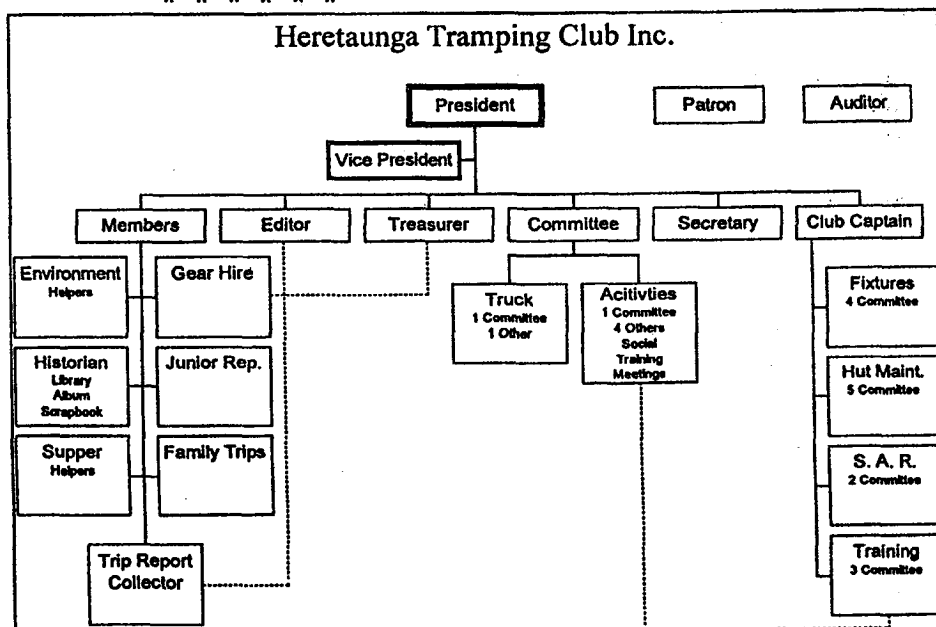
Closer to home: Did you know we have our own WETA and Ken Hunt said even though DoC have built luxury units for them they have shunned same.....don't know where they are well off!!!!!!

All 10/80 drops 90% satisfactory. Non-target animal 1 Red deer. No effect on blue duck, falcon or kiwi. Kaweka south also good results.

Shirley Bathgate

\* \* \* \* \*

MODIFIED STRUCTURE OF  
HTC EXECUTIVE



MAKINO HUT - Alternative tramp for Trip No 1616  
July 31 1994

On Sunday the five of us met at the Puketitiri Domain at 7.30am. We drove out to Makahu and along the Hot Springs road to the Makino track. It was very misty and a bit drizzly, but very mild when we started along the track at 8.30. DoC had obviously been there recently as the track had been tidied up. After an area of grasses and flax the ground cover changed to an interesting assortment including lycopodium and ferns, with clumps of charming umbrella ferns. We heard an occasional fernbird and once what sounded like a kaka or parakeet.

We passed the Makino bivouac and arrived at the hut at about 11am just as two other trampers were leaving. The hut was very comfortable, having been newly lined and with good mattresses on the six bunks. We decided it would be too far to walk down to Te Puia and back along the river, so instead walked for about an hour along the track to Ballard Hut. The bush here was memorable chiefly for the assortment of lichens and mosses both on the ground and festooning fallen logs and totara trees. We returned by the same route, taking almost the same time. The mist had cleared and at intervals we had good views in all directions when the bush opened out into clay pans and slopes. We were back at the car by 4pm. after a most enjoyable and unhurried tramp.  
D.T.

Party: Glenda Hooper (Leader), Jenny Lean, Lisa Starnes, Sandy Wiggins, Deborah Turner.

LONGVIEW - AWATERE

Trip No 1617

August 14 1994

The great saga began on the Saturday night before the trip. A SAR callout came in from Taupo and HTC members flocked to participate, which was a credit to our organisation. By 9pm that night the leader had delegated his job and only seven trampers were left to go to the Ruahine Range. It was decided to keep the trip going in fairness to those who were not SAR personnel. Some of us agreed that we didn't mind giving up the pleasures of grovelling in wet Whiirinaki undergrowth for the joys of striding over the tops. However, things didn't quite work out that way.....

We got away as planned and had an uneventful drive down to Kashmir Road. The road from Moorcocks to the roadend was mushy but passable. Hopefully it will dry out over the summer. Big excitement when C.H. tried to turn the truck at the gate while avoiding all the parked cars at the same time. Despite faithfully following the instructions given by her party members she managed to bury the bull bars in the bank on the east side. The truck didn't have enough power to be driven out and we were very short of person power to push. After pondering the problem the shovel was brought out and a passing deer stalker lent a shoulder which was very much appreciated. The truck bounded out of the hole and could then be parked facing the exit. A smooth and professional operation by all the diggers and pushers. (No doubt a wally-of-the-week shield for the driver!)

By this time it was noticed that a stiff 'breeze' was blowing in our faces - as often happens in those parts. It didn't slacken at all as we climbed up the hill to Longview and was a raging gale in exposed places. Arch decided to go back to the truck and rest. The other six went on to Longview and an early lunch. The wind was far too strong to go up on to Rocky Knob and visibility to the west was limited. Not a lot of snow about either - just a few wet patches. It was decided to drop down into the river from the hut and go on to Awatere Hut. This was achieved without any problems (in spite of Dave's love for leatherwood and steep

bluffs to drop over) and before long we were all skipping merrily over the rocks and shingle. There were obvious signs of recent slips into the stream. It didn't take long to get to Awatere Hut, take a look around and then continue over the river and up the ridge to Moorcock Saddle. From there it is an easy wander along the top to the farmland above the roadend. Or it would have been easy if there had been no air movement. At times the gusts were so strong that people were sent flying into bushes below the track. It didn't let up at all but fortunately there was no rain and it wasn't very cold. Eventually everyone straggled back to the truck and we set off not long after 3pm. On the way back to Mill Road we met up with Dave Mullinder who had brought his fiancée in for a look around and to say hello to us. Our best wishes Dave, for the big event. Back to Hastings by 5.30pm - we'd had an enjoyable day. C.H.

Party: Captain Christine Hardie, Lieutenant Susan Lopdell, Commander Dave Cormack, Sergeant Arch Lowe, Privates Gloria Taula, Graham Abraham and Hugh O'Donnell.  
What a Team!!!

#### TONGARIRO NATIONAL PARK - SNOW TRIP

Trip No 1618

August 26-28 1994

Sixteen members departed on Friday night, and after a brief stop at Turangi, arrived at the carpark at the start of the Waihohonu track about 10.30pm on a clear cool frosty night. Barry chose his tent-fly and the balance had a restful night in the truck. The sun was welcome as it joined us for breakfast, and the fifteen of us (leaving Joy with the truck) all went on the 'A' trip. After a brief look at the old historic Waihohonu Hut, and a snack in the new one, we headed off for Oturere Hut and arrived about 1.30pm. Consideration was given to some camping in the Central Crater of Tongariro, but this was decided against. After a brief rest we proceeded up the valley to find a site to learn and practice skills - moving in a snow environment and self arrest techniques with an ice axe.

A 7am departure next day was not greeted with enthusiasm by some, but was to make the most of the expected fine day, and a clear fine day it was. Once we struck consistent snow crampon use was the next skill to be covered, but three members did not have any and the club ones were in use except two pair which could not be adjusted down small enough to fit. So, on the way up to the Emerald Lakes several hundred steps were cut to get all safely to the top. We crunched off across the Central Crater to the gully leading out to Ketetahi Hut, with some detouring up to the south edge of the Blue Lake, which was frozen over and snow covered. David H. and Barry did a circuit around Blue Lake and up onto the North crater, likewise Hugh and Ross had gone there from the central crater.

The balance of the group headed south across the Central Crater and up the south wall to the ridge overlooking the South Crater. We waited here for the four from the North Crater who had gone on to bag Mt Tongariro. The ridge track route down was sharp, steep and rocky, so for those without crampons I belayed them down a clear route on a rope from a snow stake, with assistance from Ross down the North 'wall' of the South Crater, in three rope length stages. Others cut steps and dug out three resting platforms at the end of each rope length to hold the 'vistims' until the belay was set up for the next section. After stage three the slope was safe to continue down. Then remained the traverse of the South Crater and down the track to the Mangatepopo Valley where Joy met us with fresh mandarins, then onto the waiting truck at the Mangatepopo carpark and departing about 6pm.

It had been a remarkable day, just white snow and blue sky, many skills learned and practiced and a long day too - 10½ hours and most of those on crampons. Many thanks to those who were able to assist those needing help and the step cutting, and to all for making the trip the best snow trip for many years. After a fuel

and food stop at Turangi we arrived home about 10.30pm.  
J.M.

Party: John Montgomerie (Leader), Ross Berry and Joy Stratford (drivers), Dianne & Graham Lawlor, Graham Abraham, Gloria Taula, Hugh O'Donnell, David Harrington, David Cormack, Sue Lopdell, Neil Mora, Anke Knechtmans, Leo Brunton, Anne Cantrick, Barry Thompson.

# APITI SADDLE

Trip No 1619

September 11 1994

With 25 in the truck we arrived at the carpark off Ngamoko Road, Norsewood, and disappeared into the woolshed to get out of the strong wind and horizontal raindrops - so much for the fine looking day we had left behind. Anyhow it wasn't too wet - just wet enough for Mrs Lyn to spend all day putting on and taking off her parka. Unfortunately she didn't obey Leaders orders and leave it on so we could have an interrupted fine spell - I think a serious reprimand from the President is in order!

Dave Mulinder met us at Norsewood, while Wayne and 2 others came by car to give a total of 29 out for the day - 27 of us headed along the Apiti Track while Peter and Craig took the truck to the end of Manawatu River Road for an easier day. The first part of the tramp to Apiti Saddle is along the start of what was meant to be a road linking Apiti, in the Manawatu with Southern Hawke's Bay. This was formed in the depression years and gives easy walking into the bush. Even when the road finished the going was still pretty good and we reached the first junction and stopped for a breather. Most of the party continued on with Dave H. while 8 of us stopped for lunch and retraced our steps back to the carpark. Here Christiana took a carload to tell Peter we were back and once he arrived we headed off to the Makaretu River to pick up the rest.  
G.H.

The continuing party.....

About 11.15 we waited for the party to regroup and decide who wanted to carry on or return the same route. The sun broke through the cloud for a brief time and bathed us in warmth. Those of us continuing on headed north and down to the Manawatu River. The descent took us half an hour and was a nice variety of forest and bush. Once in the river bed it was plain sailing to the hut for lunch at 1pm. Somehow we all managed to get a seat in the hut and enjoyed some food and conversation. We all felt Graham Lawlor's disappointment at finding only four sardines now fit in a tin. Needless to say they were all eaten. From there it was river work for about three hours to the truck. Along the way we encountered more cattle traces and finally met the beasts happily grazing on the river side, a long way from any farmer. Everyone managed the river crossings without problems and it offered an excellent way to wear in my new boots.

We arrived back at the truck at 5pm and were quickly on the road home. A good day was had by all, and many thanks to Glenda for organising and leading.  
G.S.

Party: Glenda Hooper (Leader), Peter Berry (driver), Graham, Dianne & Thomas Lawlor, Graham Shepherd, Lady Lyn Gentry, Lissa Cairns, Susan Lopdell, Gary Smith, Rodger Burn, Shirley Bathgate, Gloria Taula, David Harrington, Lex & Greg Smith, Brigitte Engelhardt, Christiana Stevens, Wayne Hatcher, Graham Abraham, Mike & Phill Malone, Margaret Jones, Craig Shaw, Dave Mulinder.

\* \* \* \* \*

What some people will do for a box of chocolates.....

At the Christmas Barn Dance Wayne Hatcher was seen on his hands and knees (No, not proposing), BUT, pushing a cow pat from one end of the woolshed to the other with his nose.

MORERE SCENIC RESERVE

Trip No 1620

September 24-25 1994

Eleven passengers embarked from Taradale on what was to become a Tiki Tour of Northern Hawke's Bay. First stop was for lunch at the Brunton farm at Raupunga, then onto Mahia Peninsula where we spent about an hour fossicking amongst the rock pools on an exposed reef at Mahia Beach. Geoff took us on an alternate route to Morere, - a winding back country road that seemed to get narrower and narrower but there were great views of Hawke Bay and the wet Kaweka Range! Late Saturday afternoon saw us encamped in the small camping ground behind the tea-rooms, then for the next hour soaked in the outdoor hot pools - what a tramping trip.

Sunday morning we wandered over to the Reserve complex only to be greeted by a fierce looking guard dog. The DoC guy let us in early and we set off through large groves of nikau palms gradually ascending to the turnoff to the local cemetery, which revealed some of the local history. We continued up the ridge through tawa, mature lancewoods, kohekohe, rewarewa tawa and rimu with a patch of black beech which is usual at this level. Native orchids lined the track on the descent to the Mangakawa Track.

This track follows the Mangakawa Stream up the valley, and with its gorges and beautiful deep pools was magic. There are still the remains of the old hot pools beside the track and old pipes. Ascending a ridge out of that valley reminded me of a miniature "Mangatutu", coming out of the Reserve to the lookout with 360° views, and here we lunched for about  $\frac{1}{2}$  an hour. It was all downhill on the homeward journey through picturesque bush, with enough time for another hot swim then it was homeward bound by 3pm and back in Napier by 5.30pm.

Thanks to Geoff for driving and taking us down memory lane (the old haunts of his surfing days) and for the partys company. Morere Reserve is an area well worth visiting.

S.L.

Party: Susan Lopdell (Leader), Bing Potts, Geoff Robinson, Dianne & Thomas Lawlor, Shirley Bathgate, Liz Pindar, Gary Smith, Leo Brunton, Rodger Burn & Brigitte Engelhardt.

MACKINTOSH- KAWEKA HUTS

Trip No 1621

October 9 1994

Di was ill so I took over at the last minute. Arrived at the Lakes Road carpark where Craigs team disembarked 8am ish. We left the 3 wire carpark 8.30am with 21 or so people, and arrived at MacIntosh Hut 10.07 where we had a good smoko. Sue Holmes and Glenda Hooper sprang a side trip on us and took 10 or so down to Lawrence Hut and left at 10.42.

The weather was just right as the early morning chill left and good sunshine prevailed. The trip to Kaweka was all but uneventful with Alan taking a swim or was it a shower in a stream. We lunched at the hut at 12.15 with the weather closing in, and it threatened all afternoon but came to nothing. Back on the track by 2pm and it was a good walk out to meet Ross and family at the carpark by 4pm where my car loaded up and we were home by 6pm. Thanks my team for a good day.

G.L.

Party: Graham Lawlor (Leader) Jenny Lean, Neil Mora, Liz Pindar, Annette Shaw, Gloria Taula, Mike Malone, Mandy Leslie, Leo Brunton, Rodger Burn, Sue Holmes, Glenda Hooper, Alan Whittaker, David Cartwright.

MT. EGMONT

Trip No 1622

October 20-24 1994 Labour Weekend

Thursday 20th:

6.15pm the adventure began with Martin steering us into a gusty head and side wind as we departed Arataki Honey. The wind was strong but other activities such as pillow fights, hackie sca, tickling etc had the truck bouncing along with hilarity. Nearly missed picking up Heather at Highway 50 junction. Stopped in Sanson and Hawera, arriving at Dawson Falls road-end about 12.15. A cold wind blew down the mountain, and with the starlight we could make out the Eastern slopes, and a cloud bank resting on the southern slopes. All but the hardiest and brainless slept in the truck, with Martin and I choosing a room with a cool fresh chill - the new shelter on the front entrance of the visitors shelter.

Friday 21st.

Awakened at 6.15 by the call of....the mountain, which I viewed from a platform in all its early morning splendor. Heaps of snow and the promise of fine weather. With a cool wind still about everyone prepared themselves in the DoC shelter at the visitors centre. Away at 8.15 my party climbed to the Stratford Plateau via the Konini track watching the running water of the Kapuni Stream. At the plateau carpark we caught our first glimpse of the Manganui skifield and a brash encounter with everyones friend (if you've got a hut pass, 'Andy', the East Egmont Field Centre Manager). Within 5 minutes he had all the hut pass details and was convincing David he needed one. Then it was across the impressive gorged Manganui monster recently covered in avalanche debri, and a pit stop at the skifield public shelter. While refeuling views of mountain and surrounding countryside had all in awe. Left 10.15 then slipped and slid on patches of ice and dodged snowballs as we followed the high level track to Tahurangi Lodge at the top of the puffer. Over moss and lichen covered slopes with tussocks waving and in and out of snow-filled guts, then we lunched from 12.15-1245pm. Sunning ourselves Martin climbed onto the balcony and an all-out war erupted with snowballs flying in all directions. Onwards the high level track crossed steeper snow covered slopes and guts, but with views and awesome weather the prospect of a slip was furthestmost from the mind. The snow was considerably soft and easy to kick into. A scramble across the loose debri of Boomerang slip and we descended back into Egmont bush and down to Holly Hut arriving 4.15. From the porch of the house we surveyed the Poukai Range, then at 180° a view back to the mountain. Four went for a walk to Bells Falls. Big meals and a chat with an Israeli and Switz ended the day. Dawson Falls 900M/Tahurangi Lodge 1510M/Holly Hut 980M (Gain 630M. Loss 530M)

Saturday 22nd.

Out of Holly Hut by 8.30am, earlier a frost had greeted us at the door. David, Heather and James diverted to Bells Falls with the rest of us heading around the western side of the mountain. Barren and exposed, the slopes were welcoming in fine weather. We gazed upon dracophyllum, tussocks, snow, and ice pinnacles. We had the Little and Big Pyramid, and the Turtle all in full view to study. As we enjoyed the uniqueness two runners with little cladding and small fluorescent day-packs jogged past, and focussed on their task, they said little. Martin and Ann were the first to arrive at Kahui hut for lunch - the spurt of energy apparently due to the effects of some magical pill Anne had?! From 11.45 to 1.30pm we basked in the sun.

From the dry rocky tracks we'd traversed, into bush again, the tracks became boggy, but the bush in shades of green light made it pleasurable. Lookouts into gorges gave us an insight into the massive erosion taking place on the mountain. Waiaua Gorge hut appeared at 4.15pm with two other occupants sunning themselves on the grass in front. A couple had dips in the river, others enjoyed the sun and watched the mountains changing moods as clouds formed and dissipated. That night John made contact on his radio and gave us the news of the SAR in the Ruahines. Holly Hut 980M, Little Pyramid 1150M (Gain 170M) Kahui Hut 890M, Waiaua Gorge 610M (Dropped 540M).

Sunday 23rd.

With the promise of fine weather and a clear day we got away at 7am. - destination alpine!! Down a ladder into the Waiaua gorge, a scramble out and a long steady climb on the true left of the gorge to bluffs in the alpine zone. Past Branes Falls tumbling into its self made amphitheatre. The bush became shorter and mosses



and lichen became more prominent until we reached leatherwood, then snowgrasses. In and out of snow gullies and past lava bluffs - the alpine area was a pleasure to traverse in the fine weather, however, a cool wind kept you in touch with your vulnerability. On a decent slope snowcraft was given by John for 30+ minutes then a rocky crop lunch was enjoyed by all.

Once over and past a couple of tricky gullies we reached the high point of the high level track about 1.40pm. All except John and I continued down back into the bush to Lake Pine Hut, with Martin being faster than the others having some-one to chase. (A Swedish lady captured his interest). At 1.55pm with our hardware on John and I departed the high level route for a southern climb of Fathoms Peak. The snow surface varied greatly, a layer 5cm - 30cm thick of loose, wet, large ice crystals on ice. With many breathers we summited at 3.30pm. A cold chill, but views only best described by the words "Had to see to believe". We explored the summits large ice domes called "saratrugi". Off at 4.00pm, and 45 minutes we were back to the high level route. A short diversion as John experimented with crevices - he disappeared to his arm-pits in a narrow but deep enough crack on the slope. Initially a surprise, but we had a decent laugh afterwards. Descending through scotch mist we arrived at Lake Dive at 6pm, the rest all perched behind a hut window gazing out onto the lake that has formed behind one of the two "Beehives". The mountain cleared and a red sunset glowed on us as night fell. Waiiau Gorge 920M, Fathoms Peak 1966M, (gain 1356M), Lake Dive Hut 910M, (drop 1056), Fathoms (drop 620M)

Monday 24th.

Keen to have one last taste of alpine Egmont, and while the weather continued to be fine all but David, Heather and Gloria departed 7.45am back up to the high level track. However, the weather was changing a northerly wind and cloud build-up indicated rain. More snow guts, snow fights, huge views and sun topped the long weekend off. Around to Fathoms Peak to the track coming up from Dawson Falls to Kapuni Lodge and onwards to Rangitoto Flat between Fathoms and Egmont. John had a chat with a man in Motueka, and we all said our good-byes to the alpine zone which on this occasion had been very welcoming. Back to Dawson Falls at 11.30am, the other three arriving 15 minutes later having enjoyed the bush.

The centre was swarming with day trippers who watched us and even took photos of us. Our truck was also popular, especially with the DoC officer - she was quite impressed. Packed and rolling at 12.15pm, a drop off and Martin and I scooted around to North Egmont to pick up Graham's party. Back to Stratford for refreshments and reflections, home about 9pm.

Many thanks to Martin for all his driving, and to every-one on the trip who made it a memorable, enjoyable, and much easier task as leader. It was magic.  
N.M.

Party: Neil Mora (leader), Martin Mallow, John Montgomerie, Anne Cantrick, Heather Jackson, Gloria Taula, David Harrington, James Chittenden.

Party B:

We left Dawson Falls on a fine windy day, letting the A team go ahead. It's never safe to leave your pack with Leo or Graham - every-one got rocks put in theirs. We stopped at Manganui shelter at 9.15am for nibbles and drinks, and here we caught up with the A Team. After this it was into snow on the track, - a bit tiring but great. We stopped at the T.V. mast, Trig 1468 for lunch. It was very windy but we found shelter, and watched the A team go on their way before we went down the Puffer. It was steep going down there and our legs didn't like it very much, and when we came to the sign post marked Maketawa Hut we turned down it and arrived about 2pm. We had the whole hut to ourselves, and had plenty of time to relax in the sunshine, take photos and play cards.

Saturday 22:

Another fine day and on our way by 8am with a long day ahead of us. Travelling to North Egmont there were totaras, and more ladders to climb up and down, and steps that just about kill you. At the Visitors Centre we took the Veronica Track and more ladders and steps. When we met the river Susan tried to cross the wire bridge but found it very unsafe, so we all got wet feet, then stopped several meters

upstream and had nibbles about 10.45am. Then it was off to Kaiu Hut where we arrived about 12pm for lunch. The hut was very small so we sat outside in the sun. It was slow climbing upward to Henry Peak which just about killed every-one, but it did slow Thomas down a bit, but it was great to get to the top and see all the views. We passed some tarns on the plateau then down to Pouakai Hut for the night, arriving at 5pm - a long 9 hour day and some very tired bodies. We got some bunks quickly as there was a full hut - a bit too close to the road.

Sunday:

Away by 9am - a fine day and a short day for walking. It was all down hill until we got to the Ahukrawakawa swamp which was very interesting, then it was to Holly Hut by 11am. Nobody in sight when we got there. We had it all to ourselves so got our bunks for the night then went for a walk down to Bells Falls. Plenty of steps going down and well worth the walk. We also found a track which follows the river to the Falls. After quite a rest sitting beside the waterfall enjoying the peace and quiet it was back up the steps to the hut where we had lunch. Out came the cards again while we lay about in the sunshine. We all had a full wash in the cold river - well worth it too. A young guy and his girlfriend arrived, and they turned out to be checking everybody for hut passes but we all had ours. Before we went to bed Sue had put some rocks under Leo's bed, but when he got in they all rolled out, worst luck.

Monday 24th:

A bit cooler and overcast as we left Holly Hut about 7.45am and headed up the track back to North Egmont. There were plenty of views to see and as we passed Boomerang Slip it appeared rocks could come down at any time - not very nice. Back at the visitors centre by 11am where we got stuck into some ice-creams, muffins and a cup of tea. We walked down to the 2km carpark, then carried on to the 5km carpark where Neil and Martin picked us up at 12.15pm. A great weekend was had by all. J.L.

Party: Graham (Leader), Dianne & Thomas Lawlor, Susan Lopdell, Jenny Lean, Leo Brunton.

### CAIRN TRIP

Trip No 1623

November 6 1994

The truck and 5 cars left for Makahu fully loaded except for Lew's boots. Don't we all dread this happening one day. Leaving the Makahu carpark approximately 8.15am and we struggled for Domini through buffeting winds of 90km/hour, and this turned many back. A smoko break was had, we regrouped and struggled for the top. Dr Mike Lusk donated his 3 service charges to the club with Gloria, Liz and Darren being patients.

At the top on the playground there were no buffeting winds - just a constant 90km gale. We held the Remembrance Service at approximately 2 minutes past 11 with 23 folk sheltered behind the Cairn, and the wreath being laid by the youngest on the trip - David Cartwright. 17 seconds later we were off for the shelter of Dons Stream. Martins hat got blown off, and being disappointed he went looking for it - no brains - he should have been looking for it in the Ruahines. The bonus was several large snow slides which we all enjoyed, then constant snow fights - all big kids again.

In the headwaters of Dons we had lunch then on down the stream and into lots of lovely spainayrd, and with a large team this took time but we made the truck by 3pmish where the club BBQ was set up and we cooked sausages for all and a slice of bread. I know one person who had 4 and I enjoyed every one of them.

Special thanks to Robyn Berry for making the wreath, and Mike Bull and Graeme Thorp who independently turned around Domini to guide some who couldn't or shouldn't carry on in the wind as it was very scary, but that wind made a trip we will never forget.

L.G.

Party: Mr Lyn Gentry (Leader), Craig Shaw, Martin Mallow, Lex Smith, Alan Whittaker, Gloria Taula, David Harrington, Wayne Hatcher, Christiana Stevens, Ros & Mike Lusk, Arch Lowe, Susan Lopdell, John & Margaret Jones, Liz Pindar, Brigitte Engelhardt

cont.....

Neil Mora, Mike Bull, Shirley Bathgate, Graeme Thorp, Hugh O'Donnell, Darren Sayer, Deborah Turner, James Chittenden, Elisa Cairns, Philip Mardon, Sue & Ed Holmes, Lew Harrison, Bing Potts, Kathie Turner, David Lewis, David Cartwright, Rodger Burn, Mandy Leslie.

KAIARAHİ STREAM - Party B MacKintosh - Kaweka Hut Trip

Trip No1621

October 9 1994

After sorting out the troops at the Lakes road carpark my party of 6 took the track to Kaweka Hut, turning off and heading up Rouge Ridge in a strong cool breeze and stopping for a break out of the wind behind the Tits. Darren and Ann lead the charge down the spur first past the Tits into the headwaters of Kaiarahi Stream, hitting our appointed spur right on the mark in the river. Heading off downstream after lunch we made good time all the way down to where the Kaweka-MacKintosh track crosses the stream encountering no major problems.

We hit our first major waterfall not far past this point, which is impassable and should be got around on the true right of the stream. This waterfall is a series of drops in a sheer rock walled gorge; the second waterfall is also impassable and should be sidled on the true right, dropping back into the stream about 200 metres from the river junction of the Tukituki river. Going back upstream to have a look we walked into a gorge about 4 foot wide and 30 metres in length of sheer rockwalls. Down the Tukituki to the 3 wire bridge and a slow grunt up the track to the carpark, arriving at the truck about 5.30pm., after a good days walk, picking up Sue's party at the Lawrence Road end, and back in town about 7pm.  
C.S.

Party: Craig Shaw (Leader), Anne Cantrick, Darren Sayer, Dave Harrington, Neil Mora.

PUREORA FOREST

Trip No 1624

November 19-20 1994

After leaving Sue with the 'B' party Eddie became the leader. He knew a short cut he said. Some time later we came to a locked gate so Wayne, Christiana and Eddie walked to a house nearby while Geoff and myself went off to look at an old car body. When they arrived back we were told we could go no further as there was a stream ahead which we couldn't ford, so back we went the long way. At last we reached the Waihaha River on Highway 32 and started tramping at 1.35pm. The track follows the river and I found the river very attractive and pleasant to tramp beside with its rapids, pools and winding gorges cutting through volcanic rock. At times the sound was roaring as it rushed towards the sea, and at times spectacular volcanic bush covered bluffs tower above the river. We arrived at Waihaha Hut at 3.20pm. It has 6 bunks, a coal range stove and it had two bins of coal outside. After a short break we headed off again following the river, this time through some attractive bush and at 4.45pm we set up camp in a lovely spot by the river.

On awakening we found there had been a good frost, and within a stones throw of us, feeding in the river, were two Blue mountain ducks who took no notice of us as we had breakfast, and broke camp at 7.30am. We headed off climbing up on to the Hauhungaroa Range in a very short time. We stopped and took off our shirts, then carried on along a broad ridge with some spectacular bush containing some large Hall's totara. At odd times we had good views of Lake Taupo and Tongariro National Park. On arriving at the Motere trig, 991 metres, the track descends quickly to the Mangakahu Stream and then onto the Nuffield Lodge, and we were out of the Park by 2.30pm. We carried on down the road until 3pm where we found a good place for the truck to turn. Thanks Geoff for all that time you spent at the wheel.  
L.H.

Party: Ed Holmes, Christiana Stevens, Wayne Hatcher, Lew Harrison.

## Party 'B'

This trip required an earlier start than most would have liked and we left Geoff's house at 5.30am Saturday and picked up the rest of the bods at Taradale at 6am. Our first stop was at the Taupo Super-loo which was most impressive, but cost 20 cents per person (FMC cards were not acceptable), then onwards to Pureora Forest Park, west of Taupo. We had difficulty finding the Bog-Inn carpark amongst the labyrinth of 4WD tracks, but eventually arrived at our starting point at 10am.

Sue's party (9 of us) were away by 10.15am, initially for a look at the Bog-Inn Hut some 40 minutes away - an older hut in good order surrounded quite aptly by a large area of bog. After a look see and photographs we continued and climbed steadily up a ridge toward the summit of Weraroa, avoiding the many mud patches and roots, until we stopped for lunch at 12.15pm. We carried on through the forest, pausing frequently to admire the stands of matai, rimu and totara, and catch the occasional glimpse of Lake Taupo in the far distance. Mainly we were in thick podocarp forest on a well marked track, enjoying good weather except for a 10 minute hail storm when we thought of Wayne's party on the tops. Progress was quite fast now and slips on the mud became more frequent and Dave H. demonstrated the perfect three point landing (nose and elbows) in the mud, which duly impressed the team. We continued on past the Waihora track junction and dropped steeply to the perfect camp site amongst the trees on the banks of the Mangatu Stream where we pitched tents at 5.30pm. A pair of blue ducks aired their displeasure at the invasion of their privacy. Tea was prepared and Bruce tormented our taste buds with the aroma of his fried steak. The temperature dropped quite sharply and most were bedded down for the night by 8.30pm.

Sunday - We were away by 8.30am - the day was looking good. Dave H. and a couple of others had a brief swim in the stream and we could hear their yells or screams as we plodded up the steep bank from the Mangatu Stream. Rodger lost his watch along this stretch of track and John lost his gaiters in the stream. Fortunately Dave H. following on behind picked up the watch and returned it to a delighted owner, and we carried on along a pretty track, arriving at Waihaha Hut at 9.30 where we stopped for smoko. This hut is neat and tidy in a grassy clearing just above the stream. We continued on along the most scenic part of the trip along a gentle undulating track with magnificent views of the gorges and rapids flowing through the towering volcanic ignimbrite cliffs. This scenery made the trip really worth while and we met up with Geoff who had come along the track to meet us.

We stopped for lunch by the wire bridge at the Mangatu Stream, then back to the truck at the carpark on SH 32, at 1.10pm. The truck was on the move by 1.25 to look for Wayne. We had a brief stop for some junk food, then picked up Wayne's team at 3.45pm who were waiting for us, then after another food stop we were homeward bound arriving at 9pm.

Thanks to Sue for organising another great trip, and to Geoff for all the driving. R.B.

Party: Sue Lopdell (Leader), Bruce Almond, Gary Smith, John Jones, Dave Harrington, Dianne & Thomas Lawlor, Andrew Dacey, Rodger Burn.

Truck Party: Geoff Robinson, Bing Potts.

X X

## SOME COMMON PLANTS TO BE FOUND IN THE RUAHINES

Shrubs....	Hebe Odora	fragrant shrub hebe
	Dracophyllum recurvum	turpentine scrub
	Podocarpus nivalis	snow totara
	Cassinia vauvilliersii	tauhinu, mountain cottonwood
	Olearia colensoi	tupare, leatherwood
	Coprosma foetidissima	stinkwood
Herbs.....	Celmisia incana	white-leaved daisy
	Leucogenes leontopodium	edelweiss
	Helichrysum bellidioides	mountain everlasting
	Euphrasia revoluta	eyebright (smaller)

FAMILY TRAMPS

Tramps during the period August to November 1994

Hughie continued to favour the family groups with plenty of lovely sunny days and no cancellations due to inclement weather. The four tramps during this period saw most of our 'experienced' younger trampers out at least once and three new families; the Worlledges, the Grays and the Wiggins joining us, - welcome to all of you.

In August a large group of us (39) visited Lake Opouahi. We walked round the lake and towards Thomas's bush. Lunch was had on the farm land before the bush after which most then carried on through the bush to the look-out. It was a lovely day and a variety of return routes were used. (Please note that, particularly with such big groups, it is important to tell the Leader directly if you are taking a different route to the rest of the party as there was a little bit of concern at the end of the day as to where some people were - although they did emerge).

In September a smaller group (26) visited the Ahuriri Estuary. This was a visit to the middle estuary and was accessed from the end of Ballantyne Road (or was it Poraita Road?). Locating the actual public access posed a slight problem but after a few consultations with locals we finally found it. From the access point we walked along the right bank towards the sea hoping to make the low level bridge. However, flagging enthusiasm from the younger ones saw us turn round shortly after we crossed the Taipo Stream. Peter had brought his binoculars and we were able to get good sightings of Royal Spoonbills and Godwits.

October saw another smallish bunch (21) visit the bush on Gwavas Station. On reaching our destination we had our picnic lunch beside the stately unoccupied Gwavas Station mansion. After lunch we walked through the bush and back onto farm land to rest in the sun while the children played around. Returning back we crossed the bush on a farm track, quickly returning to the mansion where upon we went round the magnificent gardens which surround it. A good day and well worth the visit.

Our November trip deviated from that advertised owing to our Leader disappearing for a search. Instead 22 mothers and children, 1 Nana and 1 adult? token male visited the William Hartree Reserve at Puketitiri. A quick trip around the Kanuka Track was accomplished before lunch. After lunch we did the circuit of the Reserve and the little ones did well by walking most of the way. Bird life on this trip included two tuis cavorting in the kowhai and a shining cuckoo who showed off all his iridescent colours in the sunshine.

Families participating during this period were: Avril Turvey, David & Anna Plowman, Pachel, Matthew, Christopher, Rebekka and Hannah Perry, Heather & Hamish Thurston, Tammy & Libby Boaler, Erika & Conal Bristow, Claire & Glen Holmes, Nikki Harrington, Laura & Fraser Oram, Ryan & Ashleigh Wiggins, Sarah & Katrina Berry, Ellen & Monica Worlledge, Mathew & Colleen Gray, Lawrence Taula, Ben & Edan Lennan, Stuart & Robert Berry, Mathew & Alex Dale, Daniel, Donna & Natalie Berry plus Mums, Dads, Nannas & hanger ons.

FIXTURES LIST

**New year** A camp out on the Hot Springs Road if there is sufficient interest

**Contact:** Glenda Hooper 8774183

**January 22** A wander down the stream at Adeanes Bush

**Contact:** Josie Boland 8351805

**February 18 & 19** Train trip to Ormondville (returning via Club truck)

**Contact:** Peter Berry 8774183

**March 19** Private bush reserve in the Puketitiri area

**Contact:** Eddie Holmes 8446032

**April 29 & 30** Trip to Cape Kidnappers, possibly staying overnight

**Contact:** Dave Harrington 8430290

THE FAMILY GROUP

I love to go out tramping,  
 with the family group,  
 the little ones beside me,  
 as through the bush we troop.  
 Toddlers in the back-pack,  
 children by the hand,  
 bigger ones walk on ahead,  
 we are a happy band.  
 Walking to Ball's Clearing,  
 along the well marked track,  
 Donna holding hands with me,  
 Nats in Glenda's pack,  
 Daniel going on ahead,  
 with Erika or Heather,  
 I love to go a tramping,  
 no matter what the weather.  
 The kids are getting older,  
 And now they go so fast,  
 I wonder what I'll do,  
 When tramping days are past.  
 But I'll enjoy my tramping,  
 with so many things to see,  
 then going back to Peter's house  
 and fish and chips for tea!

Nanna Pat

\* \* \* \* \*

NAPIER TO TAIHAPE TRAILBLAZERS

Last month three horses and a stage coach set off on a five-day trek to Taihape to celebrate the town's centennial. The pioneer re-enactment trip was hindered by blinding rain and winds and even snow, but they still got through. Five bags of mail and plenty of food were loaded on board the coach - the mail to be delivered when the coach joined Taihape revellers for steam train and Clydesdale horse rides in the township. About eighty trekers supported the stage coach team.

The history of the Napier-Taihape trek dates back about eighty years when the last Hawke's Bay Motor Co. coach and horses travelled this road - as the motor vehicle was introduced in the early 1900's. During the horse and coach era there were no accidents on the Gentle Annie, these started with the advent of the motor vehicle. A wagon did, occasionally go over the side of the Annie, the site becoming known as Kelly's Mistake. One incident was that of Ted English in his Model T Ford, he disappeared over the side of this hazardous road in 1927. There are many tales of drivers missing gears, the car rolling backwards to an uncertain fate, and many others.

The Gentle Annie was named in the memory of a fabled Kuripapango barmaid.

The poor weather conditions, a few days into the trip brought the reality of pioneer days, with wind, rain and snow and the campers dossing down in trucks or wherever they could find a comfortable position.

Snow did pose a few braking problems for the stage coach, so as a precaution it was tied to a truck for the down-hill journey....while with the uphill section five horses were added to the team to make it a little easier. As for the feared and respected Gentle Annie today, she rules today as she did then...the stage coach drivers giving her the reverence she deserved.

H.B. Herald Tribune

X X X X X X X X

WOOLSHED TRAVERSING ??? - Yes, that happened at the Barn Dance also.

Why do people tramp? Science is at last being brought to bear on the question and an article in 'New Biology' (No 27) should be read by all serious minded trampers. The scientific approach involves controlled experiments and very properly begins with laboratory experiments while using white rats, cockroaches and rhesus monkeys. Some illustrations of the experimental work with the substitution of the word 'tramper' for 'rat', 'cockroach' or 'monkey' will show clearly what valuable light is likely to be thrown on the behaviour of trampers. A rat (tramper) by means of a T passage may be faced with the choice of turning in a certain direction towards the stimulus of scenery. Rats (trampers) usually choose the scenery.

All recent studies support the conclusion that variation of stimulus is important. Two aspects may be distinguished, namely the novelty of the stimuli and their complexity. Both of these are effective in attracting the attention of rats (trampers).

These observations all suggest that exploration can be compared with such primary activities as eating and sleeping in that there is a strong tendency to perform them at intervals. Further justification for this notion comes from another type of experiment. A single choice point can lead to a small box (hut) on one side and to a larger space on the other. Rats (trampers) learn to go on to more 'interesting' space exactly as they learn to go to food or to water. In another experiment it has been found with monkeys (trampers) that the opportunity to 'look at a view' is an effective reward; however if monkeys (trampers) are given food as a reward for solving the puzzle of reaching the viewpoint, this new reward is distracting and results in a decline in 'efficiency'. (Courting may also be a distraction).

On the other hand restraint of movement has an effect on behaviour which calls for more study. There is evidence that restraint in cages (houses) or enclosures (town sections) often result in compulsive stereotyped movements (ceroc dancing) some of which can lead to injury. It also has an ill effect on the development of intelligence.

If rats (trampers) are put into a maze (range) but not rewarded on reaching the goal point (hut) they learn the correct route more quickly than rats (trampers) who have had no previous experience of the maze (range). They make fewer errors and their running time is shorter.

It seems that exploratory learning is actually interfered with when the animal (tramper) is in a state of need, say hungry or thirsty; in this state the learning is only related to reaching food or water.

Free exploration in fact demands time for 'irresponsible' behaviour. It might be thought that such freedom from immediate necessity would be found only in the 'highest' animals (intelligentsia) but exploratory behaviour undoubtedly occurs also in insects (trampers). The insect (tramper), whenever it is within its home-range, can move by the shortest route to a goal which may be its nest (hut) or some other object (trig, view etc). Wasps (trampers) and other insects (bods) undoubtedly possess a 'sense of direction' or 'topographical instinct' of a high order. A wasp (tramper) while on its way to its nest (hut) taken in a closed box (truck) to another part of its range, may when released return with little delay to its nest (hut) using the shortest route from its new starting point. The nervous organistaion that makes such feats possible remains completely obscure.

Exploring does not only enable an animal (tramper) to find his way about a particular region. It has been known for some time that rats (trampers) which have had experience of learning one maze (Kawekas) tend to be better than inexperienced rats (trampers) at learning another maze (Ruahines). Rats (trampers) with more experience in earlier life not only display greater 'intelligence' as adults; they are also less 'emotional'.

And finally, learning the topography of a larger area is an especially well-developed ability in many animals (trampers).

- - - - -

The above was first written by Norm Elder, well-known by older Club members, and printed in 'Pohokura' in December 1959.

I thought it deserves a wider audience - Owen Brown

Inwards correspondence addressed to the President.....

Dear Sir,

I have been tramping in Hawke's Bay for a long time and have often encountered groups of your club members.

I am writing to comment on a serious and accelerating decline in the presentation of the club's members, which, I believe, has led to a deterioration in behaviour.

For example, there is one young man who wears a pair of short pants which are obscene, having been carelessly patched with various fragments of rag. Another, more elderly, chooses to wear horizontally striped long underwear, perhaps to draw attention away from his advancing belly and receding hairline. Several senior club males are in urgent need of a haircut, and beards are no more than repositories of disease and old food.

And what of the women? Setting aside the question of whether a decent woman would go into the bush with a man to whom she is not married, I have observed to following excesses.

There is at least one woman who appears to dye her hair and many who wear make-up. Some of your woman wear long underwear, leaving little to the imagination, and this must be very stressful to those men walking behind. I have even overheard the most vulgar and suggestive comments coming from some of the more crudely clad of these frumpish females.

Recently I have heard rumours of some very undignified behaviour known as "table traversing" being performed in mixed company after dark. Whatever next?!

You, Mr. President, are a man of decorum and good taste. May I humbly suggest that you urgently create a sub-committee, consisting of yourself and other male club elders, to evaluate the following suggestions:

1. In no circumstances should underwear be visible.
2. Balaclavas are for bank robbers.
3. Both sexes should wear sensible shirts and woolly jumpers, preferably homespun, and Fair-Isle.
4. In the winter, women may wear warm knee-length skirts - perhaps Harris Tweed - with long woollen socks or knitted stockings.
5. Summer skirts may be of a lighter material, but never denim.
6. Real men do not wear long pants in the bush at any time, but, if your lot must, I suggest saddle tweed, not too tight, in the winter.
7. Men's summer shorts should be to just above the knee, with long socks and garters if necessary.
8. Most important of all is the adoption of a Club Emblem, to be worn with pride on all occasions. For your men, I would recommend a tie, and for the ladies a scarf. Sufficient of both could be knitted at a club working bee.

By instituting the above suggestions I feel the club could regain its former position of respect in Hawke's Bay, and indeed Aotearoa.

No longer will we see a scruffy lot of misfits who contribute significantly to the visual pollution in our lovely hills.

Yours sincerely

M. Edith Fotherington-Thomas (Miss)



## KNOCKERS

Now I've got your attention I would like to take this opportunity to rebuff the searrulous epistle purporting to be from one Miss Edith Fotherington Thomas. I shall proceed to tear her apart paragraph by paragraph.

There is certainly no drop in standard of recent times, some male members may be wearing picturesque pants, but it seems to me that not long ago a certain leading Club member tended to wear underpants only (and these of uncertain parentage). As for beards and haircuts, well, as we get older we get hairyer - one of nature's great gifts. Anyway, I doubt seriously that any of our blokes would care to kiss Edith so she's hopefully safe from disease.

I won't comment on the women as Edith has already admirably covered their many virtues except to say that I have personally never found mumble pants to be particularly stressful.

No member of our Club has ever done a table traverse in or out of daylight and we resent the suggestion.

Next paragraph, and this is the clincher; either she's referring to some long dead President and her mind is wandering in time, or else she's got the wrong Club.

**Rebutle of points 1 - 8.**

1. Hear hear, unless the body in question is particularly unsavoury.
2. Hear hear, an excellent suggestion for a working bee.
3. Never, we are not sheep and nore shall we dress like them.
4. With the underwear ban they might prefer trousers.
5. Fair enough.
6. If you can't recognise a man when he's got long johns on maybe you need glasses.
7. Thank your lucky stars they're wearing shorts. Garters and suspender belts are really a little over the top for casual tramping and should remain optional.
8. We have a Club emblem. Red, white and blue, and mountains with a lizard pickled in formalin stuck in the middle.

I'm not sure what position she's referring to here - whether it's on top of 69 or some similar peak, or our exemplary record in training and SAR.

And now I'm afraid we must leave Edith lying concealed beside the track, panting heavily and peering myopially through her misted glasses at the assemblage of HAIRY LEGS passing before her. Seriously Edith, you should consider your place in society and reach out and have a stroke..... they feel wonderful!

Signed - Nicholas Ancold

The Ed. has been waiting in vain for an update of news from our China correspondent. Hopefully Christine will have by now mastered the art of getting around on her vintage pushbike, in the dark with no lights, & rattly carrier, and that the dent in her left buttock (caused by the seat) isn't making her feel too uncomfortable. She won't need to worry about the colour of the water for a while, as part of the survival parcel the Club sent included some Raro sachets so she'll have colour as well as flavour.

Christines first trek up a mountain with some of her students had them so worried that they sent her down in the cable-car (but she blamed the humidity). I also hear she now takes the scenic route for her daily walks, down to the end of the football field, then follows the piles (not splats) of water buffalo droppings, then past the pig farm and ducks to the corner where the young soldiers stand. We'll never have to worry about her ever being late for a tramp again as she'll be well used to getting up at 6am to the sound of the siren that blasts for an hour or so, and I'm sure she's well over the shock of the firing at the target practice on the nearby military base.

Lots of us will be thinking of you at Christmas time as we sit down to a roast meal and bake veges, Christmas pud or maybe pavlova and cream. Happy Christmas and all the best Christine.

### HAWKE'S BAY WETA DISCOVERED

A new species of tree weta has been discovered in Hawke's Bay. Claire McCormick, public awareness officer for DoC says the discovery is exciting because Hawke's Bay is now known for its own endemic species. "They may not be cuddly but wetas are still important. They're ancient insects dating back millions of years, just as interesting in their own way as the kauri or kiwi!" she said.

In February this year two PHD students from Victoria University wrote to DoC in H.B. asking for permission to visit the Mohi Bush and Marartotara Reserves to search for weta. The students, Mary Morgan Richards and Steven Treweek were carrying out a project looking at the ecology and distribution of tree weta across the centre of the North Island. Ms Morgan Richards had been carrying out a genetic study of weta and found that specimens taken from private bush near Raukawa looked like the "Wellington" tree weta but were genetically different.

"Wellington weta populations are not found this far north usually. Auckland weta are found in Hawke's Bay so we knew we had something unusual worth investigating". Ms Morgan Richards said. The students asked for permission to remove 10 weta so they could carry out further work including genetic fingerprinting, to confirm their findings. Ms Morgan Richards thesis is titled Comparative cytogenetics of New Zealand weta and their evolution, and she is currently working on a separate paper to name the new species and hopes to publish it within the next months. The graduate students will be continuing their observations with the help of DoC which is building weta tenements so that the H.B. weta can be observed without being disturbed. The new weta can be indentified by the alternate bands of dark brown and cream on its body, with the three segments beside the head being predominantly cream coloured. DoC would be interested to hear of sightings of the weta in different H.B. locations.

H.B.H.T.

~ ~ ~ ~ ~

### STAN THE RAT.

I set off for Waikamaka with my billy and my hat  
It was at the Waikamaka I met Stanley, Stan the Rat  
A group of us had all gone up upon a working bee  
When we arrived a big rat hole was the first thing we did see.

Well we settled in and cooked our tea, I said I'll fix him good  
I'll stop that rat from coming out and jammed in a hunk of wood.  
We settled down and went to sleep but in the middle of the night  
I woke up to a rasping scrunchy sound, it gave me quite a fright.  
I lay for hours just listening but didn't make a peep  
Because all the others were quiet so I thought they were asleep.  
Then someone gave a grumble and we very quickly saw  
Everyone of us was lying awake and listening to him gnaw.  
Someone jumped on down, banged the wall, we all began to talk  
Inside the wall the rat walked past, John tried to stab him with a fork  
They talked of guns they talked of traps they were really in a stew  
I got down and refilled the hole with a tube of contact glue  
It settled down, I nearly slept but then I heard a russle  
I heard a sniff I heard a snort and then a frightful tussle  
The rat backed off and thought a bit then gave his paw a stomp  
Once again into the frey, ready aim and chomp  
Contact glue requires a pause between each application.  
With a muffled squeak his teeth set fast, we roared in exhaltation.  
We tried to drag the damn thing out and mightily we fought  
But the rat broke free and ran away we'd lost, or so we thought.  
But Ados F2 won the day, no more droppings on the benches  
And we went and named him Stanley cause he'd left behind his dentures.

So in the Waikamaka you're as safe as in a house  
No more worry over rodent, rat or mouse.  
But if you dream of well sucked ears don't blame it on a man  
The tickly whiskers aren't a blokes, they belong to our mate Stan.

Peter Berry

MEETING HOSTS

Jan 11: Shirley Bathgate, Leo Brunton  
 Jan 25: Margaret Jones, Darren Sayer  
 Feb 8: Anne Cantrick, Ross Berry  
 Feb 22: Pam Turner, John Jones  
 Mch 8: Neil Mora, Ros Lusk  
 Mch 22: Christiana Stevens, Geoff Robinson  
 Apr 5: Robyn Madden, John Montgomerie  
 Apr 19: Mark Craven, Joy Stratford

DUTIES: Be at Clubrooms at 7.10pm. Greet visitors and fill in visitors book, sweep floor and check the heaters and lights are off at the end of the meeting.

If you are unable to be at the meeting on your specified date please change with another Club member and let the Vice President - Susan Lopdell know.

X X

MEETING NIGHT PROGRAMME

Jan 11: Social Night: Trip reports, Social chatter and forthcoming trips.  
 Jan 25: Jim's COMPASS night.  
 Feb 8: Hugh Barr talks on the role of FMC and current issues.  
 Feb 22: Hut Quizz.  
 Mch 8: Training.  
 Mch 22: Kathy Hamilton's Tour talk.  
 Apr 5: First Aid.  
 Apr 19: Lowe's escapades- slides from South America.

X X X X X X X X X X X X X X X X

CLUB NEWS

With pleasure we welcome the following new Club members:

Alan Whittaker, Mike Malone, Lex Smith, John & Jane O'Sullivan, Lisa Starnes,  
 Hugh O'Donnell, Elissa Cairns

Eileen Turner is off to Bolivia for a year as an exchange student.

Congratulations to Deborah Turner who came runner-up in a nation-wide colossus crossword competition.

A parcel of treats was sent on behalf of the Club to member Christine Hardie, who is spending a year in Guilin City in China. Hopefully you'll enjoy your goodies Christine.

TRAMPER OF THE YEAR - this year it was Darren Sayer who received the magnificent 'Stan Woon Memorial Trophy.

YOUNG FAMILY SUBS - For people whose only active tramping is with the Family tramps. The sub is for the whole family and includes membership to FMC for one person.

DONATION - Many thanks to Craig Shaw for the donation to the Club of a magnificent purpose-made cupboard unit to store all the supper gear and overhead projector in, and all on wheels for easy manoeuvrability.

HERETAUNGA TRAMPING CLUB (INC)  
INCOME & EXPENDITURE ACCOUNT FOR YEAR ENDED 30 SEPTEMBER 1994

1993		1994
\$		\$
<b>INCOME</b>		
2479	Subscriptions	2807
461	Equipment hire	376
422	Meeting contributions	487
138	Donations - hut & general	93
-	Donation - Hillary Commission	150
450	Donations - Motere Trust	450
-	- Trustbank	600
3300	Macpac Kaweka Challenge	1300
-	Working Bee	900
654	Interest received	1029
-	Sundry	310
-	Auction	353
5100	Fares received	5013
(2654)	Less: Transport costs	(3573)
(1829)	Truck depreciation	(2744)
-----		-----
617	Profit/(Loss) on transport	(1304)
-----		
<b>Sales</b>		
860	Maps	1162
150	Hut passes	78
16	Recycling sales	10
218	Sundry sales	116
-----		-----
9765		8917
<b>EXPENSES</b>		
-	Audit fees	450
1022	Purchase of items for resale	667
40	Supper & social expenses	65
50	Meeting expenses	144
114	Library & photo album	58
945	FMC capitation	900
290	Bulletin expenses (net of adv)	245
321	Stationery, stamps, etc	368
38	Hut maintenance	1219
107	Subscriptions	95
162	General expenses	81
100	Donation Rescue Helicopter	-
264	Insurance - equipment & huts	281
400	Rent of meeting room	294
147	Equipment depreciation	227
-	Hut Access fees	281
-----		-----
4000		5375
-----		-----
5765	Net profit for year transferred to	
=====	Accumulated Funds	\$ 3542
		=====
57920	TOTAL ACCUMULATED FUNDS	60712

(Copies of the complete Balance Sheet & Auditors Report can be  
obtained from the Treasurer).

OVERDUE TRAMPERS

Although returning parties plan to be out of the bush well before dark, safety considerations must come first. Even after arriving back at the transport it may take 2 hours or more to return.

Beginners should make sure that anyone who may worry about them know this. Leaders will try to get a message through to one of the overdue contacts if return seems likely to be later than 10pm. In case of concern, all newcomers should ensure that their contacts number is listed in the list the leader leaves in town. For enquiries about overdue trampers please contact one of the following.

Ross Berry 8774436

Jim Glass 8778748

Glenda Hooper 8774183

FARE CONFIRMATION AND CANCELLATION

Fare:

Local: Senior \$10; Junior \$5;

The fare must be paid NO LATER THAN THE THURSDAY PRIOR TO THE TRAMP.

Meeting night payment is preferred. Persons paying late will only be accepted at the leaders discretion and then only if a late fee is paid.

Cancellation:

If unable to make the trip contact the leader BEFOREHAND and your fare will normally be refunded (a portion may be retained if costs have already been incurred). Rarely does the Club cancel a trip. If in doubt, contact the leader or check at the embarkation point.

FIXTURES LIST

The tramps listed below are designed to cater for people of average fitness. Alternatives are available on most trips but these may not necessarily be shorter or easier. Although the area for the trip is generally adhered to, the suggested objective may change for a number of reasons. For pre trip enquiries contact the leader, Eddie Holmes 8446032 or Lyn Gentry 8750542

January 14-15: No Mans/Ikawatea Map U21 \$10

Driver: Ed Holmes

Party A: Ikawatea and upstream to Rakslide bivvy for night then Mistake bivvy and climb out to Ohawai.

Leader: John Montgomerie 8777358

Party B: Aranga Hut via Ohawa and down to Mistake Bivvy and out to No Mans.

Leader: Dianne Lawlor 8448086

January 29: Lower Tutaekuri Gorge Map U20 \$10

Driver: Geoff Robinson

Party A: From Kaweka track down river and pack float through two large pools.

Leader: Craig Shaw 8437242

Party B: From Lawrence Hut down river to 4WD track at end of Willowford Road.

Leader: Mandy Leslie 8766752

February 4-5-6: Log Cabin Map U20 \$10

Driver required

Party A: Tarurau River, Tahuhanui range to Log Cabin, Manson Creek-Cameron-Watergauge.

Leader: Craig Shaw 8437242

Party B: Log Cabin-Hoodoo Saddle-Te Iringa-Cameron hut-Watergauge.

Leader: Christiana Stevens 8772186

Local Day Trip: Lawrence-Lotkow area. Loop track possible, Cable Creek, Donald river.

February 7-17: Relax and enjoy the luxury of \$2 per night per person with the sun and surf of this Waimarama house. Come and go as and when you please.

Contact: Ed Holmes 8446032

February 11-12: Howletts working bee Map U22 \$10

Driver: Ed Holmes 8446032

Party A: To repaint exterior walls and roof.

Party B: Paint on Saturday - Longview via Otumore on Sunday - out to Kashmir Rd.

Leader: Ed Holmes 8446032

February 18-19: MACPAC KAWEKA CHALLENGEFebruary 26: Sunrise -Makaroa River Map U22 \$10 Driver: Graig ShawParty A: Triplex to Sunrise - Sparrowhawk bivvy - ridge to Makaroa river.

Leader: Christiana Stevens 8772186

Party B: Up Flounder to Gold Creek hut - ridge or maybe creek to Makaroa river.

Leader: Anne Cantrick 8448149

March 11-12: Ruapehu Map S20 T20

Driver: Ross Berry

Party A: Whakapapa to Plateau and camp night. Leader: Ross Berry 8774436/Graham LawlorParty B: Bruce road to Whakapapaiti hut and loop track to Mangahuia Stream.

Leader: Gary Smith 8449931

Local Day Trip:Waipatiki-Aropaoanui beach visiting waterfall & out via Scenic Reserve.March 26: Guthrie Smith Outdoor Education Centre: \$10

A fun day with confidence course or just come out and boat on Lake Tutira. Learn the 'ropes' at the Wednesday meeting prior to the trip. Russell Perry 8788870

April 8-9: Kapiti Island

Kapiti Island for the day. Activities on way back eg. Mt Bruce. Cost: \$50-\$60 includes boat and truck fare.

Leader: Graham Lawlor 8448086

Local Day Trip:Moorcock Base-Daphne Hut, down Tukituki River to Mill Farm & out.April 14-15-16-17 Easter: Western Urewera Maps V18 W18

Driver required

Party A: Hopruahine-Whakataka-Te Waiotukapiti-Central Waiiau-Parahaki-Omakoi.

Leader: Wayne Hatcher 8772186

Party B: Okahu-Whangatawhia-Parahaki-Omakoi.

Leader: Susan Lopdell 8446697

Local Day Trip:Blowhard Bush/Lizard: Abundance of tracks.Refer H.B. Happy Wanderer in Club library.April 23: Southern Ruahine Maps T23

Driver: Geoff Robinson

Party A: Via Coppermine Creek to hut then track to billy goat and over hill to Raparapawai.

Leader: Mike Lusk 8778328

Party B: To Coppermine hut to check out mine and over billy goat to Mangaatua Creek and out to road.

Leaders: Jim Glass 8778748/Mrs Lyn Gentry

LEADERS FOR LOCAL DAY TRIPS TO BE ARRANGED AMONGST THOSE ON TRIP

Merry Christmas  
&  
Safe holiday tramping

CLUB MEETINGS are held every 2nd Wednesday in the Harrier Club Rooms, Sylvan Road, Hastings at 7.30pm. Visitors most welcome.

# Heretaunga Tramping Club Inc.

2 December 1994

## Phone List

ALMOND, BRUCE	35 Walton Way, Flaxmere	879 6588
BARRETT, MITCH	305 Millar Street, Hastings	876 0065
BATHGATE, SHIRLEY	29 Campbell Street, Havelock North	877 8511
BERRY, ROSS & ROBYN	27 Hikanui Drive, Havelock North	877 4436
BERRY, JOHN & KAREN	12 Lucknow Road, Havelock North	877 6205
BERRY, ALAN & KATH	10 Nimon Street, Havelock North	877 7223
BERRY/HOOPER, PETER&GLENDA	14 Lucknow Road, Havelock North	877-4183
BIXLEY, GLEN	903 Gordon Rd, Hastings	
BLACKBURN, GERALD & LYNETTE	204 Caroline Place, Hastings	876 9394
BOALER, GRAEME & HEATHER	35 Guthrie Road, Havelock North	877 4698
BOWKER/MARSHALL, RICK & JAN	709a Roberts Street, Hastings	878 2828
BRISTOW/BOLAND, GREG&JOSIE	61 Nelson Crescent, Napier	835-1805
BROWN, OWEN	15 McGrath Street, Napier	835 3908
BROWN, NIGEL	9 Selwyn Rd, Havelock North	877 5468
BRUNTON, LEO	13 Howard Road, Taradale	844 7228
BULL, MIKE	51 Liverpool Crescent, Tamatea	843 6052
BURN, RODGER	69 Te Mata Rd, Havelock North	877 6322
CANTRICK, ANNE	35C Church Road, Taradale	844-8149
CHITTENDEN, JAMES	133 Westminster Avenue, Tamatea	8434933
CLIBBORN, GEOFF	30 Kent Tce, Taradale	844 6039
CORMACK, DAVID	51 Te Mata Rd, Havelock North	877-7177
CORNES, HENRY	416 Massey Street, Hastings	876 8882
CRAVEN, MARK	20 Wilson Road, Hastings	879-5296
CRAVEN, MIKE	22 Aotea Crescent, Havelock North	877 5594
de TREEND, RICARDO	700 Tomoana Rd, Hastings	876-6887
DODD, JULIET	Aorangi Rd, RD 1, Hastings	874-9629
GAY, SANDIE	79 Meanee Quay, Napier	
GENTRY, LYN LYN & REGAN	Parkhill Road, R.D.2, Hastings	875 0542
GLASS, JIM	13 Tanner Street, Havelock North	877 8748
GOLDFINCH, RANDALL	3 Ellerslie Avenue, Chedworth, Hamilton	(07) 854-7083
HAMILTON, CATHY	1 Fitzroy Rd, Napier	835 6735
HARDIE, CHRISTINE	48 Exeter Crescent, Napier	843 4912
HARRINGTON, DAVID	78 Nuffield Ave., Napier	843-0290
HARRISON, LEW	808 Park Road South, Hastings	878 5701
HATCHER, WAYNE	3/29A Guthrie Rd, Havelock Nth	877 2186
HAWTHORNE, MICHAEL	28 Gordon Rd, Te Awanga	875-0544
HAY, NICHOLAS	1005 Caroline Rd, Hastings	876-2801
HOLMES, EDWARD & SUSAN	Puketapu Road, R.D.3, Napier	844 6032
JACKSON, HEATHER	84 Rangaroa Rd, Taumaranui	
JOHNSON, KYLE	65 Gloucester St, Greenmeadows,	844 8224
JONES, HEATHER	Taradale 4 Guy's Hill Rd, Napier	835-4647
JONES, MARGARET & JOHN	22 Kaweka Place, Havelock Nth	877 5556
KNEGTMANS, ANKE	27 Abbotsford Rd, Waipawa	(06) 857 8780
LATTEY, PETER & LESLEY	Reynolds Road, Havelock North	877 7920
LAWLOR, GRAHAM, DIANNE & THOMAS	14 Elliott St, Taradale	844 8086
LEAN, JENNY	Riverslea Road South, Hastings	876 9722
LESLIE, MANDY	1 Omega Place, Hastings	876-6752
LOPDELL, SUSAN	55 Waterhouse Street, Taradale	844 6697
LOWE, RAYMOND & RAEWYN	153 Flaxmere Avenue, Flaxmere	879-8372
LOWE, ARCH	808 Puriri Street, Hastings	878 8875
LUSK, MIKE & ROSLYN	158 Te Mata Peak Rd, Havelock North	877 8328

MacMILLAN, CALUM & AMANDA	Mangatahi Rd, R.D.1, Hastings	874 9712
MADDEN, ROBYN	65 Osier Rd, Napier	844-9661
MALLOW, MARTIN	207 Wolsely Street, Hastings	878 3414
MALONE, MIKE	9 James Cook Street, Havelock North	877-8332
MARDON, PHILIP	24 Evenden Rd, Hastings	876 8558
MARSHALL, ROBERT	Waireka Orchard, c/- P.O., Pakowhai	878 7968
McBRIDE, PETER & JUDY	101 Kenilworth Rd, Hastings	876-9756
MOFFITT, ALASTAIR	41 O'Dowd Road, Taradale	844 3693
MONTGOMERIE, JOHN	11 Gardiner Place, Havelock North	877 7358
MORA, NEIL	C/- ARL, PO Box 989, Napier	878 2892
O'SULLIVAN, JANE & JOHN	629 Marine Parade, Napier	835-0560
PERRY, RUSSELL	308 Townschend St, Hastings	878-8870
PINDAR, LIZ	Station Road, R.D.2, Hastings	870 0145
POTTS, BING	721 Pakowhai Rd, Hastings	876 7724
PREBBLE, GEORGE	711 Maitland Crescent, Hastings	878 6024
ROBINSON, GEOFF	605A Grays Road, Hastings	878 7863
SAPSFORD, TED	3 Lorne Cres, Hastings	879 8993
SAYER, DARREN	Flat 3, 704 Charles St, Hastings	876-3158
SHAW, CRAIG	27 Sanders Ave, Napier	843 7242
SHEPHERD, GRAHAM	6 Beveridge Pl, Greenmeadows	844 9811
SMITH, LEX	1 Reeve Drive, Havelock North	877-4087
SMITH, JACKIE	1009E Heretaunga Street, Hastings	876 8249
SMITH, GARRY	53 Waterhouse St, Taradale	844 9931
STARNES, LISA	1015E Heretaunga Street, Hastings	876-0666
STEVENS, CHRISTIANA	3/29A Guthrie Rd, Havelock North	877 2186
STRATFORD, JOY	73 Murphy Rd, Taradale	844 9497
TASMAN SMITH, THELMA	Breadalbane Avenue, Havelock North	877 7599
TAULA, GLORIA	805 St Aubyn St W, Hastings	876 3858
TAYLOR, GLENYS	905 Florence St, Hastings	876 3511
THOMPSON, BARRY & DIANA	Whinfield, R.D.3, Napier	844-8623
THORP, GRAHAM & MARILYN	110 Riverbend Road, Napier	843 4238
THURSTON, CLIVE & KAREN	6 Kopanga Rd, Havelock North	877 6396
TURNER, DEBORAH	Glenmore, RD4, Napier	839-8877
TURNER, KATHY	20 Wilson Rd, Hastings	879 5296
TURNER, JULIE	1224 Norfolk Cres, Hastings	878-3246
TURNER, EILEEN	1001 Garry Street, Hastings	876 8995
TURNER, PAM	1001 Garry Street, Hastings	876 8995
TURVEY, JANET	165 Georges Drive, Napier	835-7041
VRIEZE, GUIDO	4 France Rd, Hastings	876 5883/877 8321
WARD, KAY	452 Raukawa Rd, RD4, Hastings	879 5903
WHITAKER, ALAN	806 Francis Hicks Avenue, Hastings	876-7035
WIGGINS, SANDY	Hukunui Station, RD4, Napier	839-8884